

ILS or LOC RWY 6

MC GUIRE FLD,

(JOINT BASE MC GUIRE DIX LAKEHURST) (KWRI)

LOC I-WRI 110.1	APCH CRS 058°	Rwy Idg 10,014 TDZE 131 Arprt Elev 141
---------------------------	-------------------------	---

AL-150 [USAF]

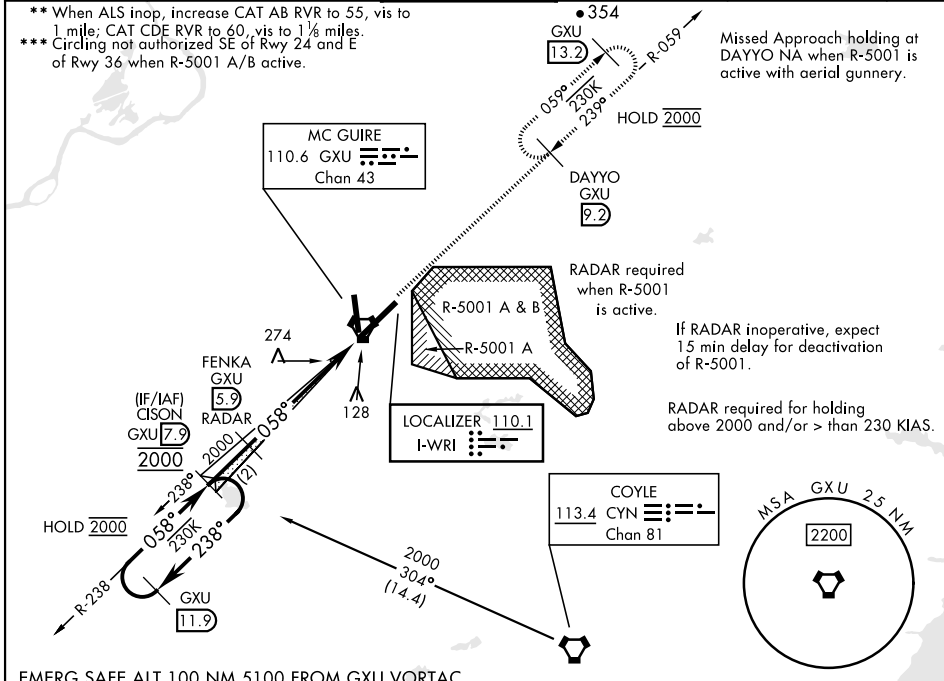
RADAR or DME required to identify the FAF.



MISSED APPROACH: Climb to 2000 via GXU R-059 to DAYYO and hold.
Alternate Missed Approach Instruction: Climb to 2000 via GXU R-059 to DAYYO, expect further clearance from ATC.

▼ * When TDZL/CL inop, increase RVR to 24; RVR 18 still authorized with use of FD or AP or HUD to DA. When ALS inop, increase RVR to 40, vis to ¼ mile.

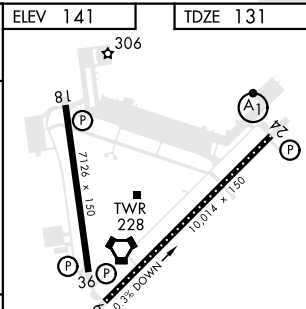
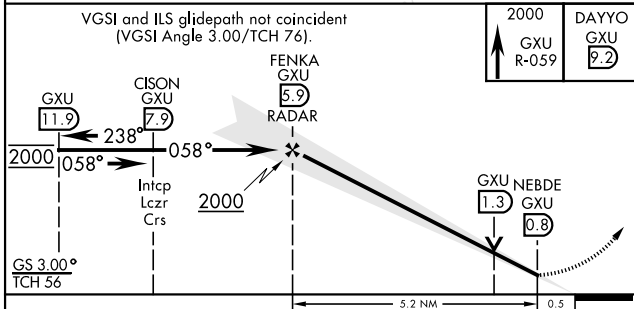
ATIS 110.6 270.1	MC GUIRE APP CON/DEP CON 126.475 363.8	MC GUIRE TOWER 118.65 255.6	GND CON 121.8 275.8	CLNC DEL 135.2 335.8	PAR
----------------------------	--	---------------------------------------	-------------------------------	--------------------------------	-----



NE-2, 11 JUL 2024 to 08 AUG 2024

NE-2, 11 JUL 2024 to 08 AUG 2024

EMERG SAFE ALT 100 NM 5100 FROM GXU VORTAC



CATEGORY	A	B	C	D	E
S-ILS 6 *	331/18		200	(200-½)	
S-LOC 6 **	540/24	409 (400-½)	540/40	409	(400-¾)
CIRCLING ***	680-1	539 (600-1)	700-1½ 559 (600-1½)	700-2 559 (600-2)	1200-3 1059 (1100-3)

Knots	FAF to MAP 5.2 NM				
	60	90	120	150	180
Min:Sec	5:12	3:28	2:36	2:05	1:44

ILS or LOC RWY 6