

WRIGHTSTOWN, NEW JERSEY

RNAV (GPS) RWY 24

WAAS CH 91359 W24A	APCH CRS 238°	Rwy ldg TDZE Arprt Elev	10,014 117 141
--------------------------	------------------	-------------------------------	----------------------

AL-150 (USAF)
MC GUIRE FIELD (JOINT BASE MC GUIRE DIX LAKEHURST) (KWRI)

▼ * When ALS inop, increase RVR to 40, vis to ¾ mile.
 ** When ALS inop, increase vis to 1 3/8 miles.
 *** When ALS inop increase CAT AB RVR to 55, vis to 1 mile, CAT CDE vis to 1 3/8 miles.

ALSF-1 MISSED APPROACH: Climb to 2000 direct CISON and hold.

ATIS 110.6 270.1	MC GUIRE APP CON/DEP CON 126.475 363.8	TOWER 118.65 255.6	GND CON 121.8 275.8	CLNC DEL 135.2 335.8	PAR
---------------------	---	-----------------------	------------------------	-------------------------	-----

**** Circling NA SE of Rwy 24 and E of Rwy 36 when R-5001 A/B Active.

DME/DME RNP-0.3 NA

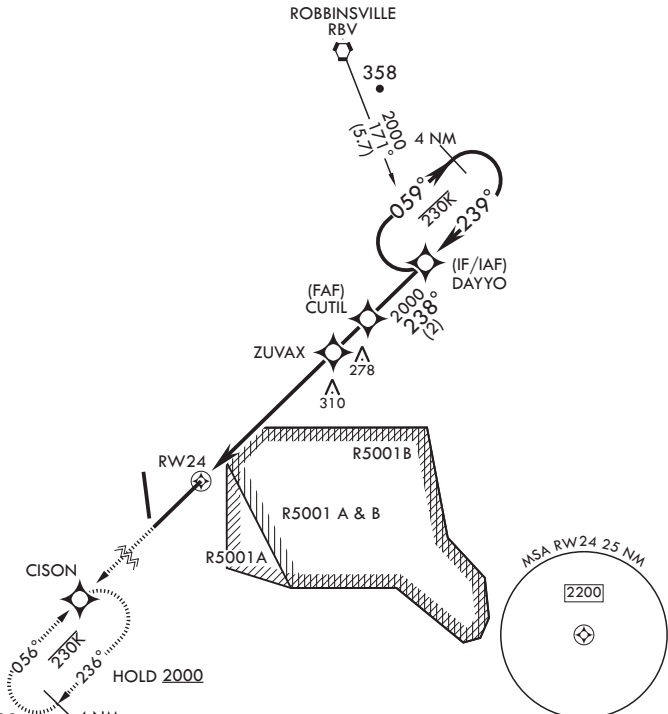
For uncompensated Baro-VNAV systems, Procedure NA below -15°C (5°F) or above 53°C (128°F).

RADAR required when R-5001 is active.

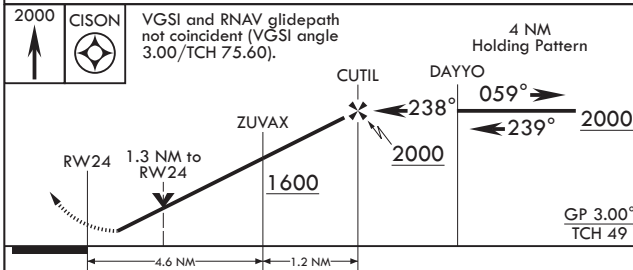
RADAR required for holding above 2000 and/or > 230 KIAS.

If RADAR inoperative, expect 15 min delay for deactivation of R-5001.

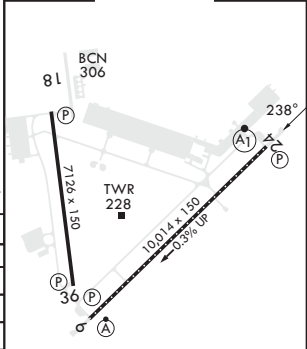
When R-5001 is active with aerial gunnery, DAYYO hold-in-lieu of procedure turn NA, expect RADAR vectors.



EMERG SAFE ALT 100 NM 5100



ELEV 141	TDZE 117
----------	----------



CATEGORY	A	B	C	D	E
LPV DA*	317/24		200	(200-½)	
LNAV/VNAV DA**	580/50		463	(500-1)	
LNAV MDA***	580/24	463 (500-½)	580/50	463	(500-1)
C CIRCLING****	680-1	539 (600-1)	700-1½ 559 (600-1½)	700-2 559 (600-2)	1200-3 1059 (1100-3)

HIRL all Rwy's
REIL Rwy's 18, 36
TDZL/CL Rwy 6

WRIGHTSTOWN, NEW JERSEY

MC GUIRE FIELD (JOINT BASE MC GUIRE DIX LAKEHURST) (KWRI)

Amdt 7 18MAY23

40°01'N - 74°36'W

RNAV (GPS) RWY 24

NE-2, 11 JUL 2024 to 08 AUG 2024

NE-2, 11 JUL 2024 to 08 AUG 2024