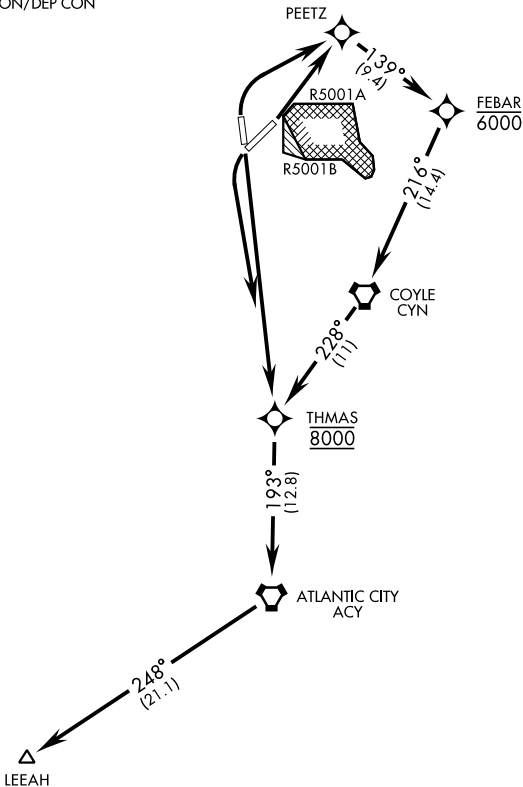


THMAS TWO DEPARTURE (RNAV) (THMAS2• LEEAH)

ATIS 110.6 270.1
 CLNC DEL
 135.2 335.8
 GND CON
 121.8 275.8
 TOWER
 118.65 255.6
 MC GUIRE APP CON/DEP CON
 126.475 363.8

Rwy	Knots	60	120	180	240	300	360
06	V/V(fpm)	237	474	711	948	1185	1422
18	V/V(fpm)	387	774	1161	1548	1935	2322
24	V/V(fpm)	384	768	1152	1536	1920	2304
36	V/V(fpm)	213	426	639	852	1065	1278

ATC Climb Rate to 8000



Rwy 06 Departure: RADAR required (when R-5001 is active)
 If RADAR inoperative, expect 15 min delay for deactivation of R-5001.

NE-2, 11 JUL 2024 to 08 AUG 2024

NE-2, 11 JUL 2024 to 08 AUG 2024

DEPARTURE ROUTE DESCRIPTION

- TAKEOFF RWY 06: Climb direct PEETZ then track and climb as depicted. Maintain 8000.
- TAKEOFF RWY 18: Climb direct to cross THMAS at and maintain 8000, then track as depicted.
- TAKEOFF RWY 24: Climbing left turn direct to cross THMAS at and maintain 8000, then track as depicted.
- TAKEOFF RWY 36: Climbing right turn direct PEETZ then track and climb as depicted. Maintain 8000.

Expect further ATC clearance to filed altitude within 10 minutes after departure.

THMAS TWO DEPARTURE (RNAV) (THMAS2• LEEAH)