

WRIGHTSTOWN, NEW JERSEY

# VOR/DME or TACAN RWY 18

MC GUIRE FLD,

(JOINT BASE MC GUIRE DIX LAKEHURST) (KWRI)

VORTAC GXU <b>110.6</b> Chan <b>43</b>	APCH CRS <b>179°</b>	Rwy ldg <b>7126</b> TDZE <b>123</b> Arpt Elev <b>141</b>
--	-------------------------	--

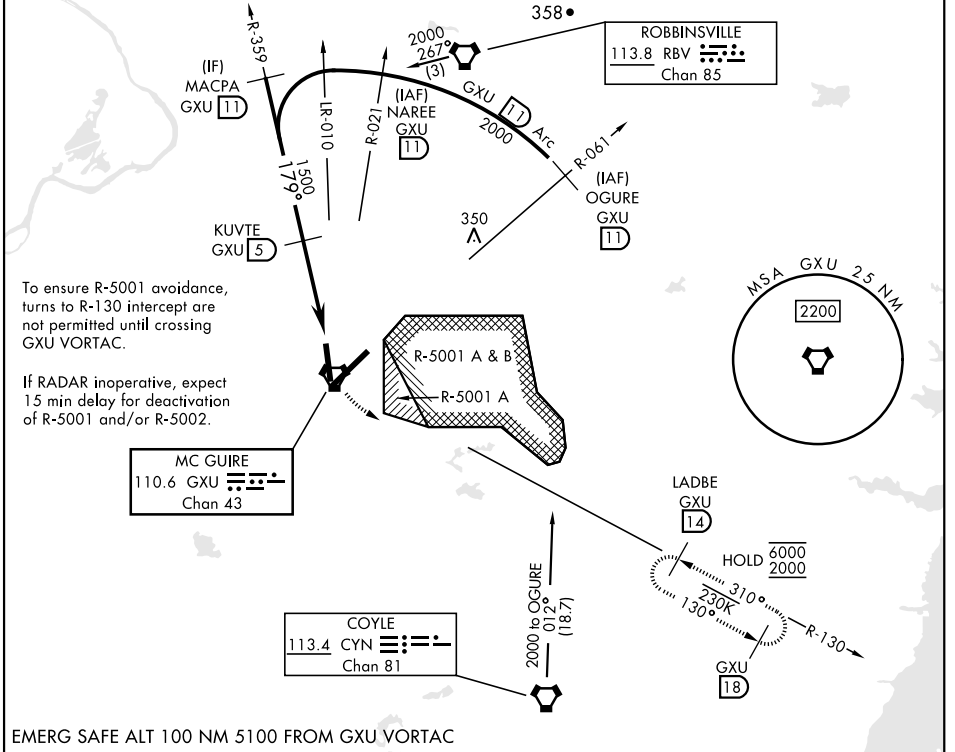
AL-150 [USAF]

RADAR required when R-5001 and/or R-5002 is active.

MISSED APPROACH: Climb to 2000 via GXU VORTAC R-130 to LADBE and hold, DO NOT turn prior to GXU.

\* Circling NA SE of RWY 24 and E of RWY 36 when R-5001 A/B active.

ATIS <b>110.6 270.1</b>	MC GUIRE APP CON/DEP CON <b>126.475 363.8</b>	MC GUIRE TOWER <b>118.65 255.6</b>	GND CON <b>121.8 275.8</b>	CLNC DEL <b>135.2 335.8</b>	PAR
----------------------------	--	---------------------------------------	-------------------------------	--------------------------------	-----



NE-2, 11 JUL 2024 to 08 AUG 2024

NE-2, 11 JUL 2024 to 08 AUG 2024

EMERG SAFE ALT 100 NM 5100 FROM GXU VORTAC

OGURE R-061 GXU 11	NAREE R-021 GXU 11	MACPA R-359 GXU 11	KUVTE GXU 5	2000 GXU R-130 14	LADBE GXU 14	ELEV 141	TDZE 123
<p>2000</p> <p>2000</p> <p>2000</p> <p>179°</p> <p>3.18° Arc</p> <p>TCH 68</p> <p>1500</p> <p>3.5 NM</p> <p>0.4</p>				<p>2000</p> <p>179°</p> <p>306</p> <p>81</p> <p>7126 x 150</p> <p>TWR 228</p> <p>36</p> <p>10.014 x 150</p> <p>0.5 NM</p>		<p>179°</p>	
CATEGORY	A	B	C	D	E		
S-18	640-1	517 (500-1)	640-1½	517 (500-1½)			
CIRCLING*	680-1	539 (600-1)	700-1½ 559 (600-1½)	700-2 559 (600-2)	1200-3 1059 (1100-3)	<p>HIRL all rwys</p> <p>REIL Rwy 18, 36</p> <p>TDZL/CL Rwy 6</p>	

WRIGHTSTOWN, NEW JERSEY  
Amdt 8 18MAY23

40°01'N-74°36'W

MC GUIRE FLD,  
(JOINT BASE MC GUIRE DIX LAKEHURST) (KWRI)

# VOR/DME or TACAN RWY 18