

VORTAC MCI 113.25 Chan 79(Y)	APP CRS 296°	Rwy Idg TDZE Apt Elev	N/A N/A 771
--	------------------------	-----------------------------	--

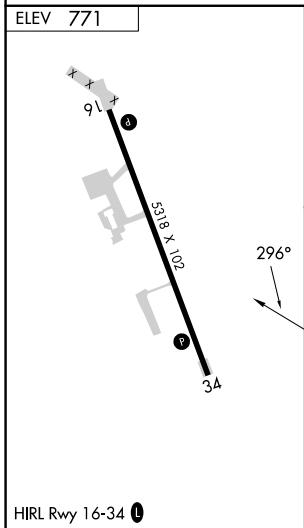
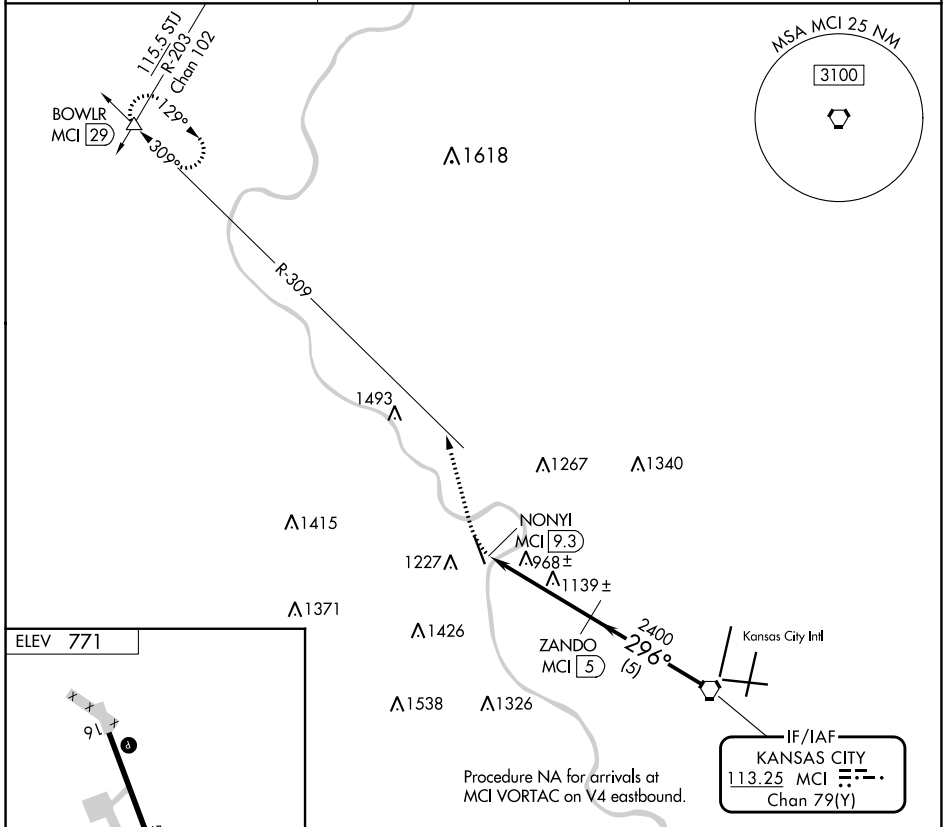
VOR-A
SHERMAN AAF (F^LV)

DME required.

▼ Procedure NA at night. Circling NA west of Rwy 16-34.
 ▲NA Use Kansas City Intl altimeter setting.

MISSED APPROACH: Climbing right turn to 3000 on heading 340° and MCI R-309 to BOWL R and hold.

MCI ASOS 128.375	KANSAS CITY APP CON 124.7 284.7	CTAF 126.2
----------------------------	---	----------------------



3000	MCI R-309	BOWL R	MCI VORTAC
hdg 340°			
NONYI MCI 9.3	ZANDO MCI 5		
2400		296°	4000
	4.3 NM	5 NM	
CATEGORY	A	B	C
● CIRCLING	1460-1	689 (700-1)	1500-2 729 (800-2)
			1640-2¾ 869 (900-2¾)

NC-2, 11 JUL 2024 to 08 AUG 2024

NC-2, 11 JUL 2024 to 08 AUG 2024