

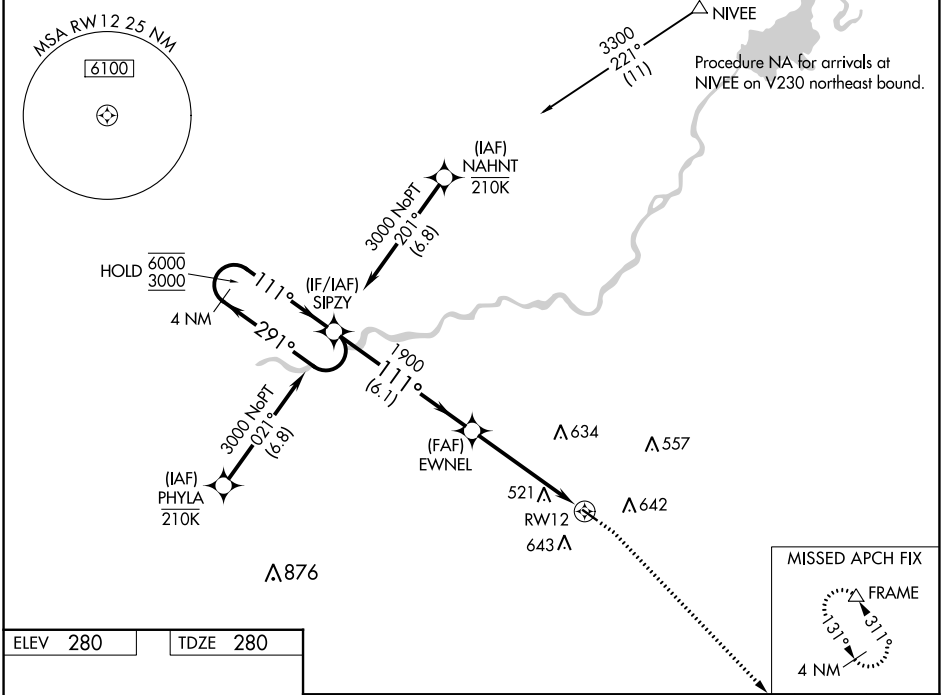
WAAS CH 49242 W12A	APP CRS 111°	Rwy Idg TDZE Apt Elev	3212 280 280
--	------------------------	-----------------------------	---

RNAV (GPS) RWY 12

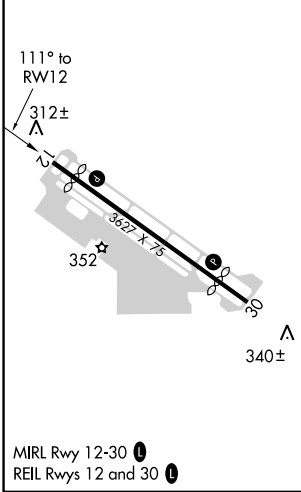
FRESNO CHANDLER EXEC (FCH)

RNP APCH-GPS.		MISSED APPROACH: Climb to 800 then climbing right turn to 2000 direct FRAME and hold.
<p>⚠ Circling Rwy 30 NA at night. Rwy 12 helicopter visibility reduction below 3/4 SM NA. ⚠ For uncompensated Baro-VNAV systems, LNAV/VNAV NA below -1° C or above 54°C.</p>		

AWOS-3 135.225	FRESNO APP CON 119.0 323.25	CLNC DEL 119.0	UNICOM 123.0 (CTAF)
--------------------------	---------------------------------------	--------------------------	-------------------------------



ELEV 280	TDZE 280
----------	----------



4 NM Holding Pattern	SIPZY	EWNEL	800	2000	FRAME
6000 ← 291°	3000 → 111°	111°	1900	1.4 NM to RW12	RW12
GP 3.00°	TCH 40	1900	6.1 NM	3.5 NM	1.4 NM
CATEGORY	A	B	C	D	
LPV DA	530-1 250 (300-1)				NA
LNAV/VNAV DA	809-1½ 529 (600-1½)				NA
LNAV MDA	780-1 500 (500-1)	780-1⅜ 500 (500-1⅜)			NA
<input checked="" type="checkbox"/> CIRCLING	960-1 680 (700-1)	960-2 680 (700-2)			NA

SW-2, 11 JUL 2024 to 08 AUG 2024

SW-2, 11 JUL 2024 to 08 AUG 2024