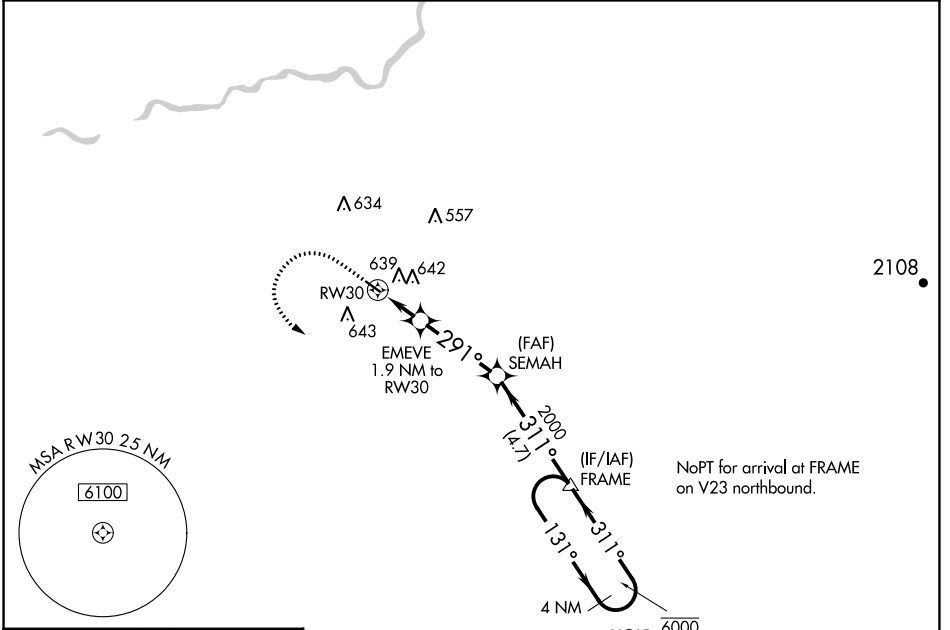


APP CRS <b>291°</b>	Rwy Idg TDZE Apt Elev	<b>3089</b> <b>280</b> <b>280</b>
------------------------	-----------------------------	---

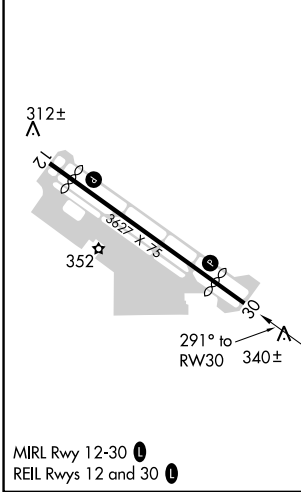
# RNAV (GPS) RWY 30

FRESNO CHANDLER EXEC (F'CH)

RNP APCH. ⚠ Straight-in Rwy 30 NA at night, Circling Rwy 30 NA at night. Rwy 30 helicopter visibility reduction below 1 SM NA.		MISSED APPROACH: Climb to 1000 then climbing left turn to 2000 direct FRAME and hold.	
AWOS-3 <b>135.225</b>	FRESNO APP CON <b>119.0 323.25</b>	CLNC DEL <b>119.0</b>	UNICOM <b>123.0 (CTAF) ①</b>



ELEV 280	TDZE 280
----------	----------



	1000	2000	FRAME	SEMAH	FRAME	4 NM Holding Pattern	
	↑	↶	△				
	EMEVE 1.9 NM to RW30		3.00° TCH 40	2000	311°	131° → 6000 / ← 311° 2000	
	RW30		920	291°	4.7 NM		
	-1.9	3.4 NM		4.7 NM			
CATEGORY	A		B		C		D
LNAV MDA	800-1		520 (600-1)		800-1 3/8 520 (600-1 3/8)		NA
<b>C</b> CIRCLING	960-1		680 (700-1)		960-2 680 (700-2)		NA