

FRESNO, CALIFORNIA

# HI-LOC Z RWY 11L

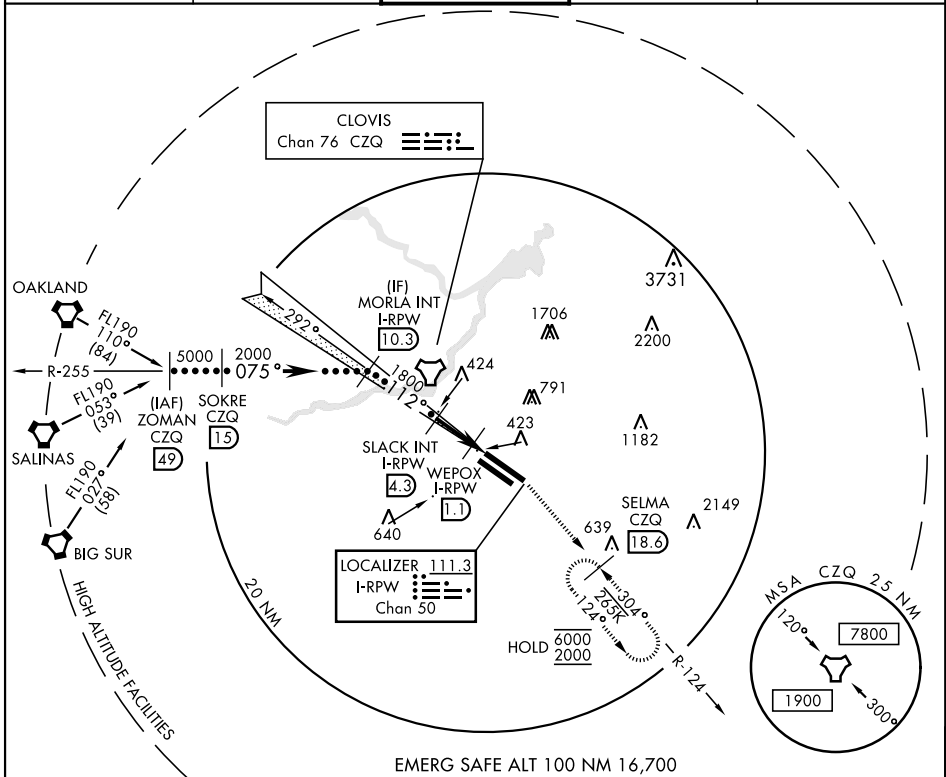
LOC/DME I-RPW <b>111.3</b> Chan <b>50</b>	APCH CRS <b>112°</b>	Rwy Idg 11L <b>9279</b> 11R <b>8008</b> TDZE 11L <b>336</b> 11R <b>333</b> Arprt Elev <b>336</b>
---	-------------------------	---

AL-162 [USAF] FRESNO YOSEMITE INTL (KFAT)

DME required.

MISSED APPROACH: Climb to 2000 on heading 112° and CZQ TACAN R-124 to SELMA 18.6 DME and hold.

ATIS <b>121.35 273.6</b>	APP CON <b>119.6 351.95</b>	TOWER <b>118.2 251.1</b>	GND CON <b>121.7 348.6</b>	CLNC DEL <b>124.35 348.6</b>
-----------------------------	--------------------------------	-----------------------------	-------------------------------	---------------------------------



ZOMAN CZQ 49 R-255 FL190	SOKRE CZQ 15	MORLA INT I-RPW 10.3	SLACK INT I-RPW 4.3	WEPOX I-RPW 1.1	I-RPW DME 0.2	SELMA CZQ R-124 18.6	ELEV 336	TDZE 11L 336 TDZE 11R 333	
<p>2000</p> <p>112°</p> <p>1800</p> <p>3.00° TCH 50</p> <p>5000</p> <p>2000</p> <p>3.2 NM</p> <p>1.3 NM</p>						<p>112° 4.5 NM from FAF</p> <p>Rwy 11L Idg 9279' Rwy 29R Idg 9227'</p> <p>362</p> <p>371</p> <p>391</p> <p>363</p> <p>404</p> <p>391</p> <p>363</p> <p>404</p> <p>362</p> <p>371</p> <p>391</p> <p>363</p> <p>404</p>			
CATEGORY	C	D	E						
S-LOC 11L	680/55		344	(400-1¼)					
SIDE STEP RWY 11R	680-1½ 347 (400-1½)		680-2	347 (400-2)					
CIRCLING	920-1½ 584 (600-1½)		920-2	1140-2¾ 584 (600-2)		804 (900-2¾)			

FRESNO, CALIFORNIA

36°47'N-119°43'W

FRESNO YOSEMITE INTL (KFAT)

Amdt 3 10OCT19

# HI-LOC Z RWY 11L

SW-2, 11 JUL 2024 to 08 AUG 2024

SW-2, 11 JUL 2024 to 08 AUG 2024