

FRESNO, CALIFORNIA

# HI-TACAN RWY 11L

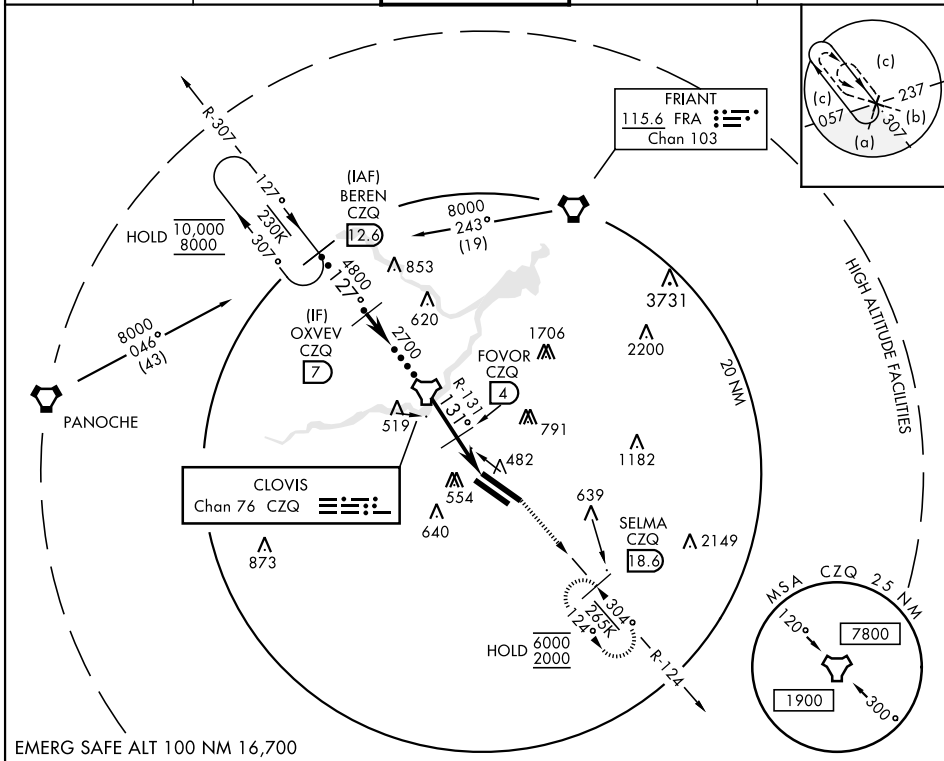
TACAN CZQ Chan <b>76</b>	APCH CRS <b>131°</b>	Rwy Idg TDZE Arprt Elev	11L <b>9279</b> 11L <b>336</b> <b>336</b>	11R <b>8008</b> 11R <b>333</b> <b>333</b>
-----------------------------	-------------------------	-------------------------------	---	---

AL-162 [USAF] FRESNO YOSEMITE INTL (KFAT)

DME required.

MISSED APPROACH: Climbing left turn to 2000 on CZQ TACAN R-124 to SELMA / 18.6 DME and hold.

ATIS <b>121.35 273.6</b>	APP CON <b>119.6 351.95</b>	TOWER <b>118.2 251.1</b>	GND CON <b>121.7 348.6</b>	CLNC DEL <b>124.35 348.6</b>
-----------------------------	--------------------------------	-----------------------------	-------------------------------	---------------------------------



SW-2, 11 JUL 2024 to 08 AUG 2024

SW-2, 11 JUL 2024 to 08 AUG 2024

BEREN CZQ R-307 <b>12.3</b>	OXVEV	TACAN	FOVOR	SELMA CZQ <b>18.6</b>	ELEV 336	TDZE 11L 336 TDZE 11R 333
10,000 8000	7	4800	2700	131° 7.3 NM from FAF		Rwy 11L Idg 9279' Rwy 29R Idg 9227'
VGSi and descent angles not coincident (VGSi Angle 3.00/TCH 50)		2000		D		
3.00° TCH 55		CZQ R-124		Rwy 11L Idg 9279' Rwy 29R Idg 9227'		
CATEGORY	C	D	E	Diagram showing RWY 11L, 11R, 29L, 29R with various altitudes and distances.		
S-11L	800-1½	464	(500-1½)	REIL Rwy 11L and 11R HIRL Rwy 11L-29R MIRL Rwy 11R-29L TDZL/CL Rwy 29R		
SIDESTEP 11R	800-1½ 467 (500-1½)	800-2	467 (500-2)			
CIRCLING	920-1½ 584 (600-1½)	920-2 584 (600-2)	1140-2¾ 804 (900-2¾)			

FRESNO, CALIFORNIA

36° 47' N - 119° 43' W

FRESNO YOSEMITE INTL (KFAT)

Amdt 2A 10OCT19

# HI-TACAN RWY 11L