

HI-TACAN RWY 29R

TACAN CZQ Chan 76	APCH CRS 307°	Rwy ldg 29R 9227 TDZE 29L 333 Arprt Elev 336	29L 8008 29L 331
----------------------	------------------	---	-----------------------------------

[USAF] FRESNO YOSEMITE INTL (KFAT)

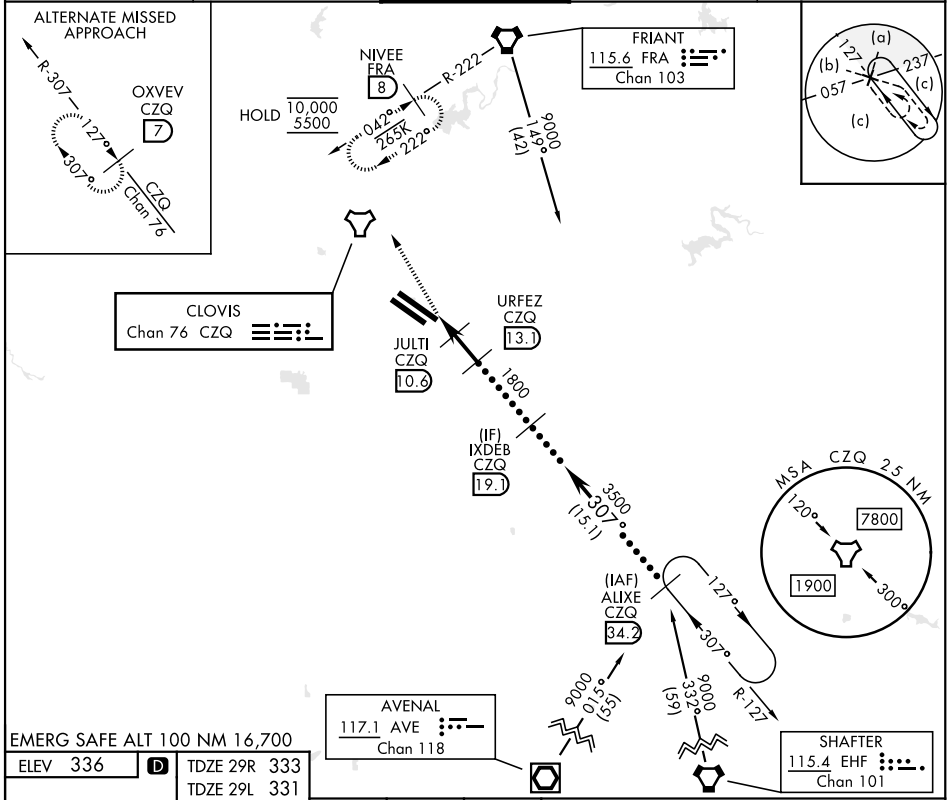
DME required

ALS-2

MISSED APPROACH: Climb to 5500 on heading 330° and FRA VORTAC R-222 to NIVEE/FRA 8 DME and hold, continue climb-in-hold to 5500.

* When ALS inop, increase CAT CDE vis to 1 ¼ miles.

ATIS 121.35 273.6	APP CON 132.35 323.25	TOWER 118.2 251.1	GND CON 121.7 348.6	CLNC DEL 124.35 348.6
-----------------------------	---------------------------------	-----------------------------	-------------------------------	---------------------------------



EMERG SAFE ALT 100 NM 16,700	ELEV 336	TDZE 29R 333 TDZE 29L 331	Rwy 11L ldg 9279 Rwy 29R ldg 9227	5500	hdg 330°	NIVEE R-222 FRA 8	URFEZ 13.1	IXDEB 19.0	ALIXE 34.2	16,000 9000
<p>VGSi and descent angle not coincident (VGSi angle 3.00/TCH 75).</p> <p>TCH 55</p> <p>1.9 NM</p> <p>2.5 NM</p>										
CATEGORY	C			D			E			
S-29R *	760/40			427			(500-¾)			
SIDESTEP 29L	760-1½ 429 (500-1½)			760-2			429		(500-2)	
CIRCLING	920-1½			920-2			1140-2¾			
	584 (600-1½)			584 (600-2)			804 (900-2¾)			

HI-TACAN RWY 29R

SW-2, 11 JUL 2024 to 08 AUG 2024

SW-2, 11 JUL 2024 to 08 AUG 2024