

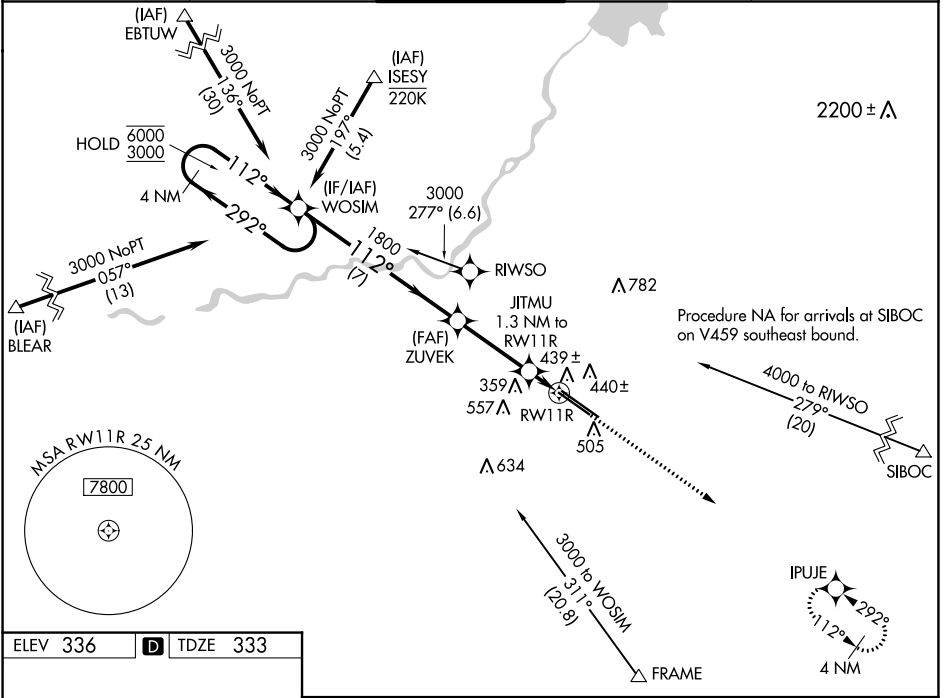
WAAS CH <b>78330</b> W <b>11B</b>	APP CRS <b>112°</b>	Rwy Idg TDZE Apt Elev	<b>8008</b> <b>333</b> <b>336</b>
---	------------------------	-----------------------------	---

# RNAV (GPS) RWY 11R

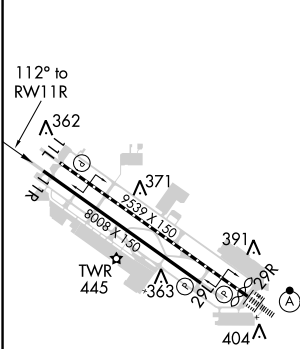
FRESNO YOSEMITE INTL (FAT)

RNP APCH.	MISSED APPROACH: Climb to 2600 direct IPUJE and hold.
<p>▼ Rwy 11R helicopter visibility reduction below 3/4 SM NA. For uncompensated Baro-VNAV systems, LNAV/VNAV NA below -1°C or above 54°C.</p>	

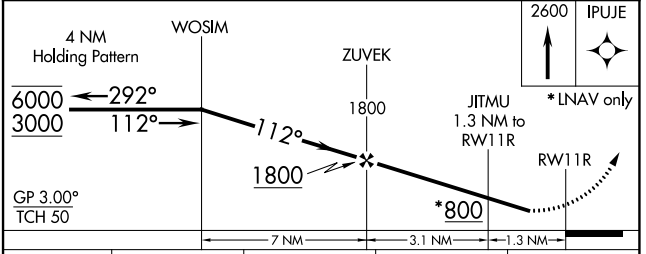
ATIS <b>121.35 273.6</b>	FRESNO APP CON <b>119.6 351.95</b>	FRESNO TOWER <b>118.2 251.1</b>	GND CON <b>121.7 348.6</b>	CLNC DEL <b>124.35 348.6</b>
-----------------------------	---------------------------------------	------------------------------------	-------------------------------	---------------------------------



ELEV 336	<b>D</b>	TDZE 333
----------	----------	----------



REIL Rwy 11L and 11R  
HIRL Rwy 11L-29R  
MIRL Rwy 11R-29L  
TDZ/CL Rwy 29R



CATEGORY	A	B	C	D
LPV DA	584-3/4 251 (300-3/4)			
LNAV/VNAV DA	620-7/8 287 (300-7/8)			
LNAV MDA	700-1 367 (400-1)			
<b>C</b> CIRCLING	820-1 484 (500-1)	920-1 584 (600-1 1/2)	920-2 584 (600-2)	

SW-2, 11 JUL 2024 to 08 AUG 2024

SW-2, 11 JUL 2024 to 08 AUG 2024