

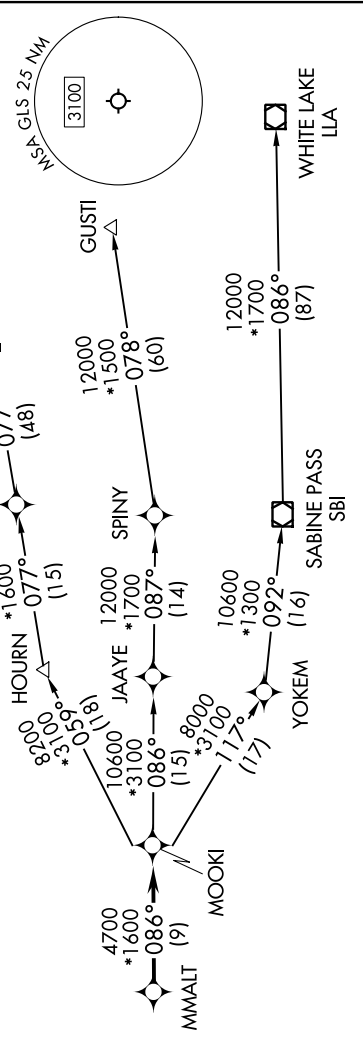
MMALT SEVEN DEPARTURE (RNAV)

SC-5, 11 JUL 2024 to 08 AUG 2024

**TOP ALTITUDE:
ASSIGNED BY ATC**

RNAV 1 - DME/DME/IRU or GPS.
RADAR required.

HOUSTON DEP CON
134.45 284.0
ASOS
123.95
CLNC DEL (When twr closed)
135.35
GND CON
118.625
GALVESTON TOWER*
120.575 (CTAF)



NOTE: GUSTI and LCH Transitions ATC assigned only for aircraft departing AXH, EFD, GLS, HPY, IWS, LBX, LVJ, SGR, TME, T00, T41 and 54T.

DEPARTURE ROUTE DESCRIPTION

- TAKEOFF RUNWAY 14:** Climb on heading 138° to 520, for RADAR vectors to MMALT, thence. . . .
 - TAKEOFF RUNWAY 18:** Climb on heading 179° to 520, for RADAR vectors to MMALT, thence. . . .
 - TAKEOFF RUNWAY 32:** Climb on heading 318° to 520, for RADAR vectors to MMALT, thence. . . .
 - TAKEOFF RUNWAY 36:** Climb on heading 359° to 520, for RADAR vectors to MMALT, thence. . . .
- . . . on track 086° to MOOKI, then on (transition). Maintain ATC assigned altitude.
Expect filed altitude 10 minutes after departure.

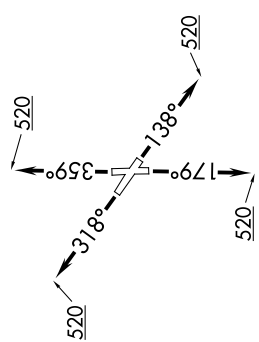
GUSTI TRANSITION (MMALT7.GUSTI)
LAKE CHARLES TRANSITION (MMALT7.LCH)
WHITE LAKE TRANSITION (MMALT7.LLA)

MMALT SEVEN DEPARTURE (RNAV)

(MMALT7.MMALT) 30NOV23

GALVESTON, TEXAS

SCHOLES INTL AT GALVESTON (GLS)



TAKEOFF MINIMUMS
Rwys 14, 18, 32, 36: Standard with minimum climb of 500'/NM to 520.

NOTE: Chart not to scale.

SC-5, 11 JUL 2024 to 08 AUG 2024