

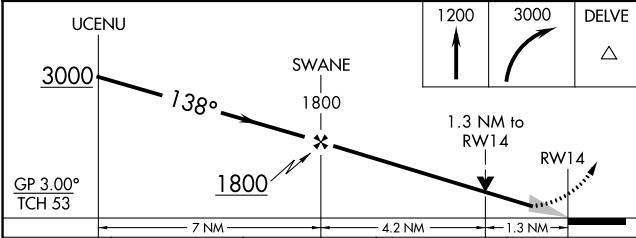
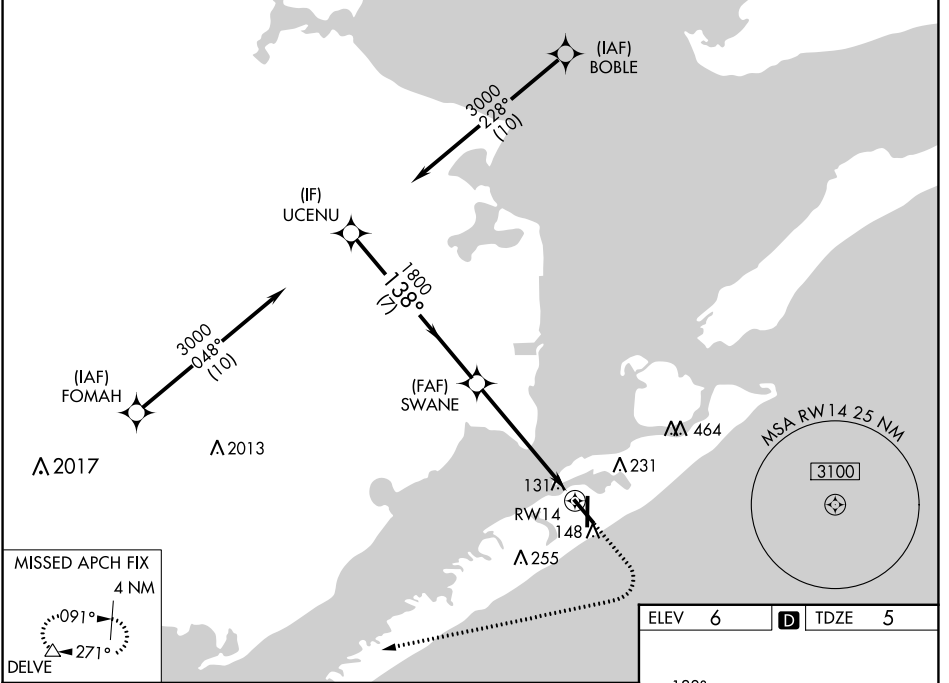
WAAS CH 65606 W14A	APP CRS 138°	Rwy Idg 6000 TDZE 5 Apt Elev 6
--	------------------------	---

RNAV (GPS) RWY 14

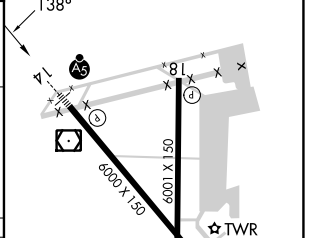
SCHOLES INTL AT GALVESTON (GLS)

RNP APCH - GPS.		MALSR	MISSED APPROACH: Climb to 1200 then climbing right turn to 3000 direct DELVE and hold.		
<p>⚠ Circling NA east of Rwy 18 and northeast of Rwy 32. For uncompensated Baro-VNAV systems, LNAV/VNAV NA below 0°C or above 54°C.</p>					

ASOS 123.95	HOUSTON APP CON 134.45 284.0	GALVESTON TOWER ★ 120.575 (CTAF) 0	GND CON 118.625	CLNC DEL 135.35 (When twr closed)	UNICOM 123.05
-----------------------	--	--	---------------------------	--	-------------------------



ELEV 6	TDZE 5
--------	--------



CATEGORY	A	B	C	D
LPV DA		205-½	200 (200-½)	
LNAV/VNAV DA		342-½	337 (400-½)	
LNAV MDA	460-½	455 (500-½)	460-¾	455 (500-¾)
CIRCLING	500-1 494 (500-1)	520-1 514 (600-1)	620-1¾ 614 (700-1¾)	620-2 614 (700-2)

REIL Rwys 18, 32, and 36
MIRL Rwy 18-36
HIRL Rwy 14-32

SC-5, 11 JUL 2024 to 08 AUG 2024

SC-5, 11 JUL 2024 to 08 AUG 2024