

WAAS CH 48831 W36A	APP CRS 359°	Rwy Idg TDZE Apt Elev	6001 5 6
---------------------------------	------------------------	-----------------------------	-------------------------------------

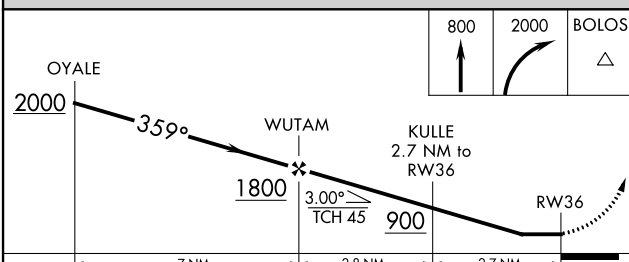
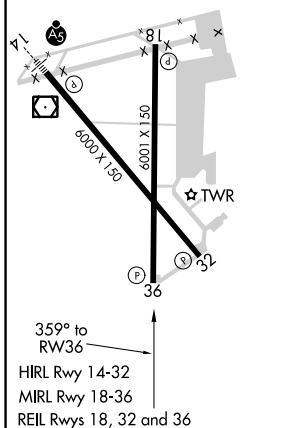
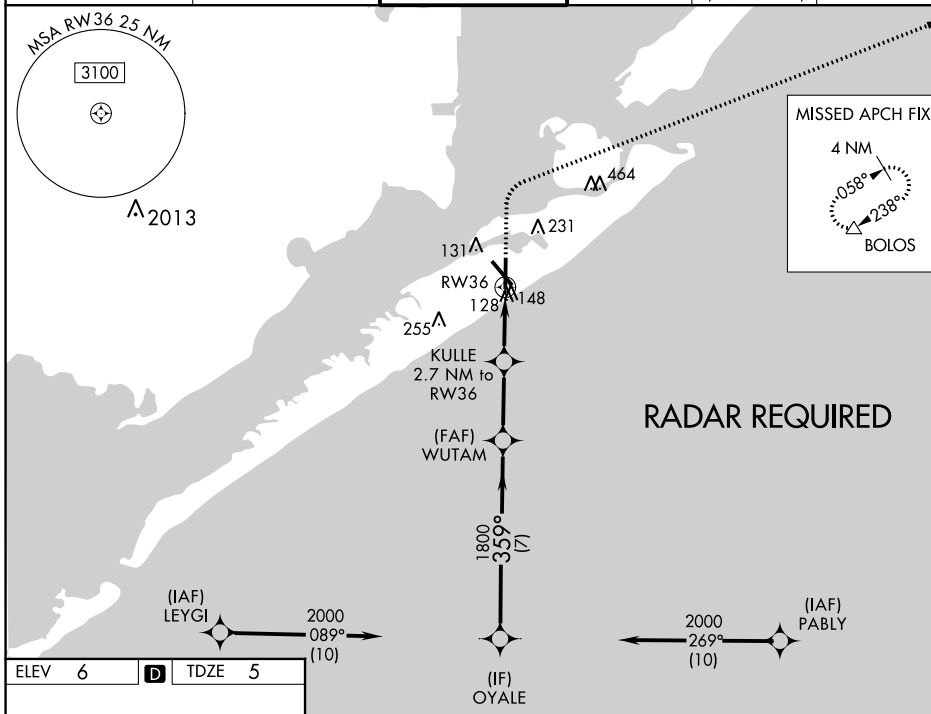
RNAV (GPS) RWY 36

SCHOLES INTL AT GALVESTON (GLS)

⚠ When VGSI inop, Straight-in/Circling Rwy 36 procedure NA at night. Circling NA east of Rwy 18 and northeast of Rwy 32. DME/DME RNP-0.3 NA. Helicopter visibility reduction below 1 SM NA. When local altimeter setting not received, use William P Hobby altimeter setting; increase all MDA 80 feet. Increase LP Cat C/D/E visibility $\frac{1}{8}$ SM, LNAV Cat C/D/E visibility $\frac{1}{8}$ SM and Circling Cat C/D/E visibility $\frac{1}{4}$ SM.

MISSED APPROACH:
Climb to 800 then climbing right turn to 2000 direct BOLOS and hold.

ASOS 123.95	HOUSTON APP CON 134.45 284.0	GALVESTON TOWER * 120.575 (CTAF) 0	GND CON 118.625	CLNC DEL 135.35 (When twr closed)	UNICOM 123.05
-----------------------	----------------------------------------	----------------------------------------------	---------------------------	------------------------------------------------	-------------------------



CATEGORY		A	B	C	D	E
LP	MDA	440-1	435 (500-1)	440-1 $\frac{1}{4}$	435 (500-1 $\frac{1}{4}$)	
LNAV	MDA	460-1	455 (500-1)	460-1 $\frac{3}{8}$	455 (500-1 $\frac{3}{8}$)	
CIRCLING		500-1	520-1	620-1 $\frac{3}{4}$	620-2	620-2 $\frac{1}{4}$
		494 (500-1)	514 (600-1)	614 (700-1 $\frac{3}{4}$)	614 (700-2)	614 (700-2 $\frac{1}{4}$)

SC-5, 11 JUL 2024 to 08 AUG 2024

SC-5, 11 JUL 2024 to 08 AUG 2024