

LOC/DME I-SXH <b>108.95</b> Chan 26(Y)	APP CRS <b>093°</b>	Rwy Idg <b>10540</b> TDZE <b>669</b> Apt Elev <b>680</b>
--	------------------------	--

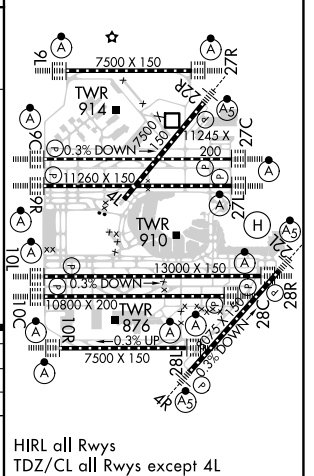
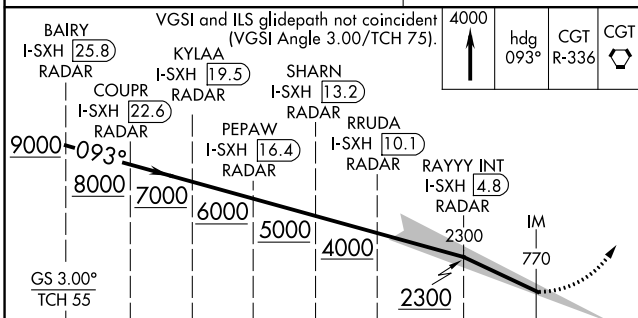
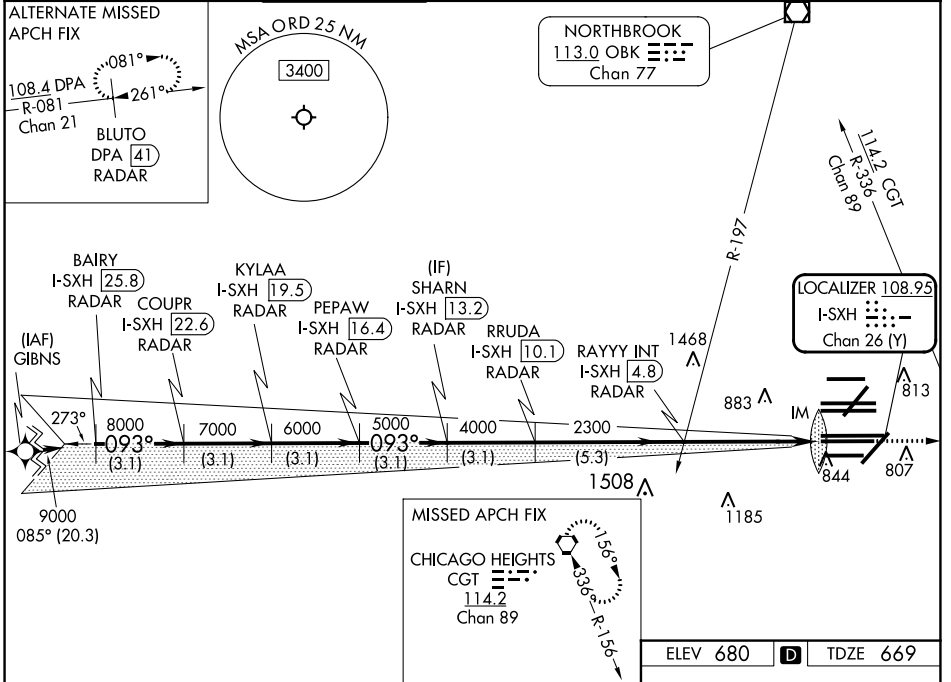
# ILS RWY 10C (CAT II & III)

CHICAGO O'HARE INTL (ORD)

From GIBNS: RNAV-1 GPS required.  
 RNAV 1-GPS or RADAR required for procedure entry. DME or RADAR required.  
 Simultaneous approach authorized. CAT II: RVR 1000 authorized with specific OPSPEC, MSPEC, or LOA approval and use of autoland or HUD to touchdown.

ALSF-2  
 MISSED APPROACH: Climb to 4000 on heading 093° and CGT VORTAC R-336 to CGT VORTAC and hold.

D-ATIS <b>135.4</b> <b>282.225</b>	CHICAGO APP CON <b>119.0 292.125</b>	O'HARE TOWER <b>120.75 348.0</b>	GND CON (TWR CENTER) <b>124.125</b> (TWR NORTH) <b>118.05</b> (TWR SOUTH) <b>226.675</b> (ALL TWRs)	(TWR CENTER) <b>121.75</b> (OBND) <b>121.9</b> (IBND)	CLNC DEL <b>121.6</b>	CPDLC
--	---	-------------------------------------	--	---	--------------------------	-------



4000	hdg 093°	CGT R-336	CGT
3.1 NM	3.1 NM	3.1 NM	3.1 NM
3.1 NM	3.1 NM	3.1 NM	3.1 NM
3.1 NM	3.1 NM	3.1 NM	3.1 NM
3.1 NM	3.1 NM	3.1 NM	3.1 NM
5.3 NM	5 NM	1091'	
CATEGORY A			
CATEGORY B			
CATEGORY C			
CATEGORY D			
S-ILS 10C CAT II RA 102/12 100 DA 769			
S-ILS 10C CAT III RVR 06			

**CATEGORY II and III ILS - SPECIAL AIRCREW & AIRCRAFT CERTIFICATION REQUIRED**

CHICAGO, ILLINOIS Amdt 2A 03JAN19 41°59'N-87°54'W CHICAGO O'HARE INTL (ORD) ILS RWY 10C (CAT II & III)

EC-3, 11 JUL 2024 to 08 AUG 2024

EC-3, 11 JUL 2024 to 08 AUG 2024

HIRL all Rwys  
 TDZ/CL all Rwys except 4L