


LOC/DME I-UJY <b>111.9</b> Chan 56	APP CRS <b>273°</b>	Rwy ldg <b>11245</b> TDZE <b>653</b> Apt Elev <b>680</b>
--	------------------------	--

# ILS RWY 27C (CAT II & III)

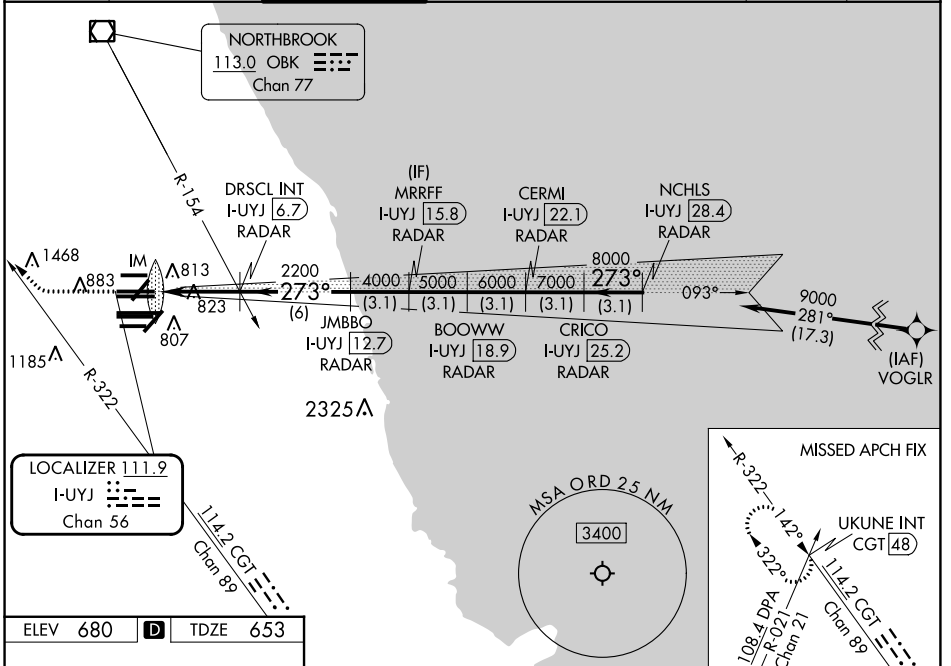
CHICAGO O'HARE INTL (ORD)

From VOGLR: RNAV 1-GPS required. Aircraft not GPS equipped - RADAR required for procedure entry. DME or RADAR required.

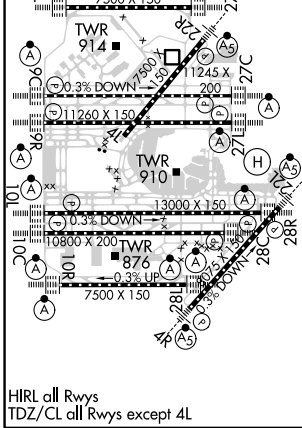
ALSF-2  MISSED APPROACH: Climb to 1100 then climbing right turn to 4000 on heading 290° and CGT R-322 to UKUNE INT/CGT 48 DME and hold.

Simultaneous approach authorized. CAT II: RVR 1000 authorized with specific OPSPEC, MSPEC, or LOA approval and use of autoland or HUD to touchdown.

D-ATIS <b>135.4</b> <b>282.225</b>	CHICAGO APP CON <b>119.0 292.125</b>	O'HARE TOWER <b>121.15 348.0</b>	GND CON (TWR NORTH) <b>124.125</b> (TWR SOUTH) <b>118.05</b> (ALL TWRs) <b>226.675</b>	(TWR CENTER) (OBND) <b>121.75</b> (IBND) <b>121.9</b>	CLNC DEL <b>121.6</b>	CPDLC
--	---	-------------------------------------	---	--	--------------------------	-------



ELEV 680	<b>D</b>	TDZE 653
----------	----------	----------



1100	4000	CGT R-322	UKUNE INT	VGSI and ILS glidepath not coincident (VGSI Angle 3.00/TCH 75).	NCHLS I-UJY <b>28.4</b> RADAR
↑	hdg 290°				CERMI I-UJY <b>22.1</b> RADAR
					MRRFF I-UJY <b>15.8</b> RADAR
					BOOWW I-UJY <b>18.9</b> RADAR
					CRICO I-UJY <b>25.2</b> RADAR
					DRISCL INT I-UJY <b>6.7</b> RADAR
					JMBBO I-UJY <b>12.7</b> RADAR
					IM 754
					2200, 4000, 5000, 6000, 7000, 8000, 9000
					GS 3.00° TCH 56
					11070, 4.7 NM, 6 NM, 3.1 NM, 3.1 NM, 3.1 NM, 3.1 NM, 3.1 NM
CATEGORY	A	B	C	D	
S-ILS 27C	CAT II RA 108/12 100 DA 753				
S-ILS 27C	CAT III RVR 07				

**CATEGORY II & III ILS - SPECIAL AIRCREW & AIRCRAFT CERTIFICATION REQUIRED**

EC-3, 11 JUL 2024 to 08 AUG 2024

EC-3, 11 JUL 2024 to 08 AUG 2024