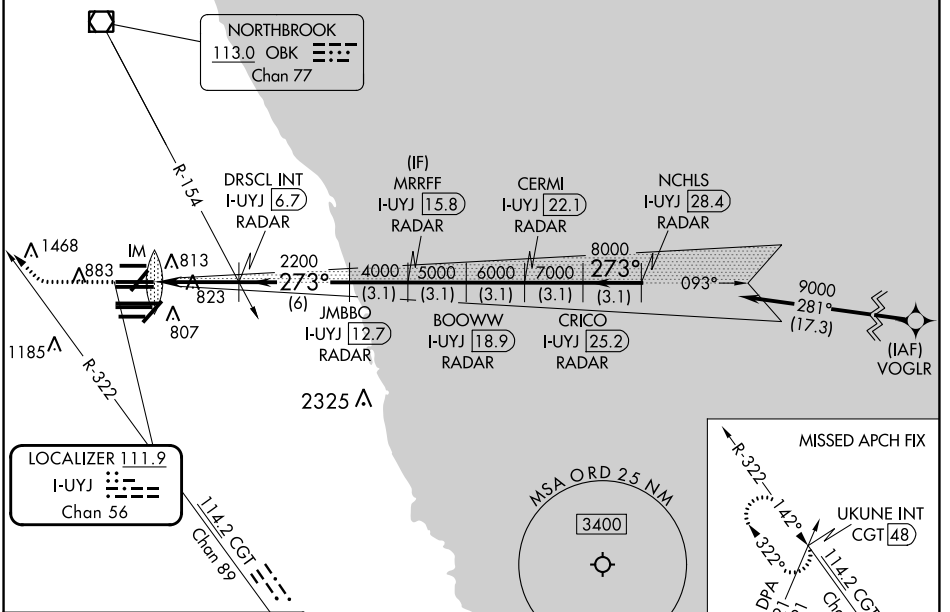


LOC/DME I-UYJ 111.9 Chan 56	APP CRS 273°	Rwy ldg 11245 TDZE 653 Apt Elev 680
--	------------------------	--

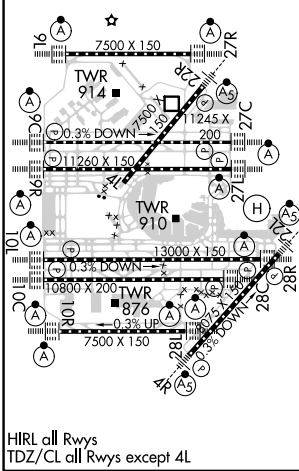
ILS RWY 27C (SA CAT I)

CHICAGO O'HARE INTL (ORD)

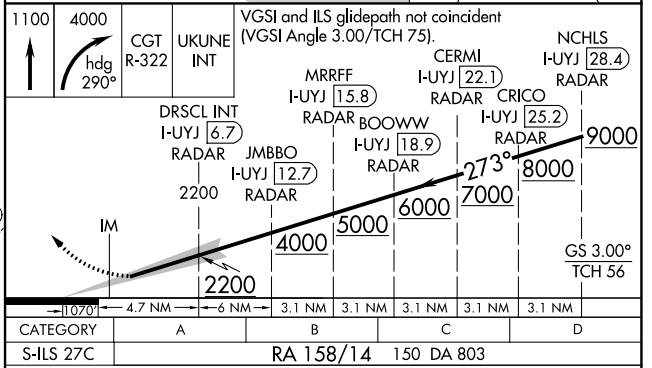
From VOGLR: RNAV 1-GPS required. Aircraft not GPS equipped - RADAR required for procedure entry, DME or RADAR required.		ALS-F2 ▲	MISSED APPROACH: Climb to 1100 then climbing right turn to 4000 on heading 290° and CGT R-322 to UKUNE INT/CGT 48 DME and hold.			
Simultaneous approach authorized. Requires specific OPSPEC, MSPEC, or LOA approval.						
D-ATIS 135.4 282.225	CHICAGO APP CON 119.0 292.125	O'HARE TOWER 121.15 348.0	GND CON 124.125 (TWR NORTH) 118.05 (TWR SOUTH) 226.675 (ALL TWRs)	(TWR CENTER) 121.75 (OBND) 121.9 (IBND)	CLNC DEL 121.6	CPDLC



ELEV 680	D	TDZE 653
----------	----------	----------



HIRL all Rwys
TDZ/CL all Rwys except 4L



1100	4000	CGT R-322	UKUNE INT	VGSi and ILS glidepath not coincident (VGSi Angle 3.00/TCH 75).			NCHLS I-UYJ 28.4
hdg 290°		DRISCL INT I-UYJ 6.7	MRRFF I-UYJ 15.8	CERMI I-UYJ 22.1	CRICO I-UYJ 25.2	RADAR	
IM		JMBBO I-UYJ 12.7	BOOWW I-UYJ 18.9	RADAR			
2200		2200		4000	5000	6000	7000
273°		273°		RADAR			
9000		9000		RADAR			
GS 3.00°		GS 3.00°		TCH 56			
CATEGORY A		CATEGORY B		CATEGORY C		CATEGORY D	
S-ILS 27C		RA 158/14		150 DA 803			

SA CATEGORY I ILS - SPECIAL AIRCREW & AIRCRAFT CERTIFICATION REQUIRED

EC-3, 11 JUL 2024 to 08 AUG 2024

EC-3, 11 JUL 2024 to 08 AUG 2024