

LOC/DME I-IAC 110.5 Chan 42	APP CRS 273°	Rwy Idg 11260	TDZE 654
Apt Elev 680			

ILS RWY 27L (CAT II & III)

CHICAGO O'HARE INTL (ORD)

RNP APCH-GPS from VOGRL

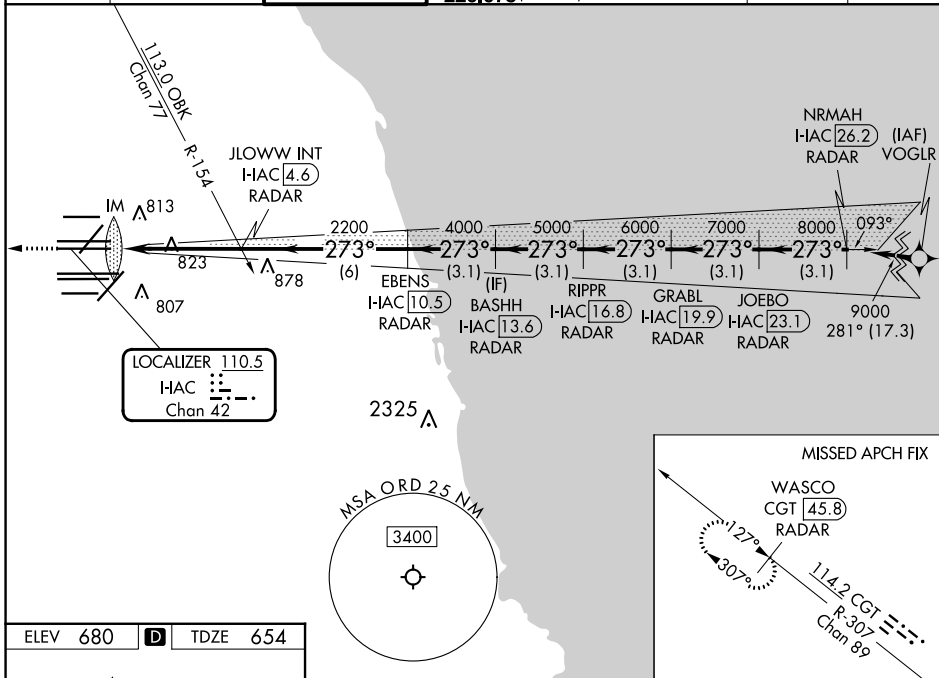
Aircraft not GPS equipped - RADAR required for procedure entry. DME or RADAR required.



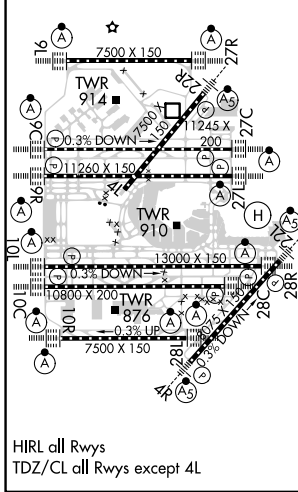
MISSED APPROACH: Climb to 1200 then climb to 4000 on heading 265° and on CGT VORTAC R-307 to WASCO/CGT 45.8 DME/RADAR and hold.

Simultaneous approach authorized.

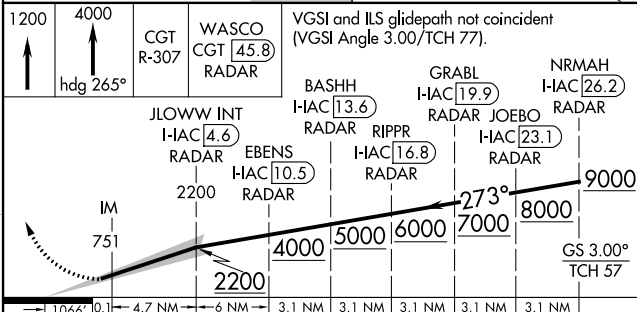
D-ATIS 135.4 282.225	CHICAGO APP CON 119.0 292.125	O'HARE TOWER 126.9 348.0	GND CON (TWR NORTH) 124.125 (TWR SOUTH) 118.05 (ALL TWRS) 226.675	(TWR CENTER) 121.75 (OBND) 121.9 (IBND)	CLNC DEL 121.6	CPDLC
--	---	------------------------------------	---	---	--------------------------	-------



ELEV 680	D	TDZE 654
----------	----------	----------



HIRL all Rwys
TDZ/CL all Rwys except 4L



1200	4000	CGT R-307	WASCO CGT 45.8 RADAR	VGSI and ILS glidepath not coincident (VGSI Angle 3.00/TCH 77).	NRMAH I-IAC 26.2 RADAR			
IM 751	JLOWW INT I-IAC 4.6 RADAR	EBENS I-IAC 10.5 RADAR	RIPPR I-IAC 16.8 RADAR	GRABL I-IAC 19.9 RADAR	JOEBO I-IAC 23.1 RADAR			
2200	4000	5000	6000	7000	9000			
1066'	0.1	4.7 NM	6 NM	3.1 NM	3.1 NM	3.1 NM	3.1 NM	3.1 NM
CATEGORY	A		B		C		D	
S-ILS 27L	CAT II RA 110/12				100 DA 754			
S-ILS 27L	CAT III RVR 06							

CATEGORY II & III ILS - SPECIAL AIRCREW & AIRCRAFT CERTIFICATION REQUIRED

EC-3, 11 JUL 2024 to 08 AUG 2024

EC-3, 11 JUL 2024 to 08 AUG 2024