

LOC/DME I-VZE 108.95 Chan 26 (Y)	APP CRS 273°	Rwy ldg 10800 TDZE 651 Apt Elev 680
---	------------------------	--

ILS RWY 28C (SA CAT I)

CHICAGO O'HARE INTL (ORD)

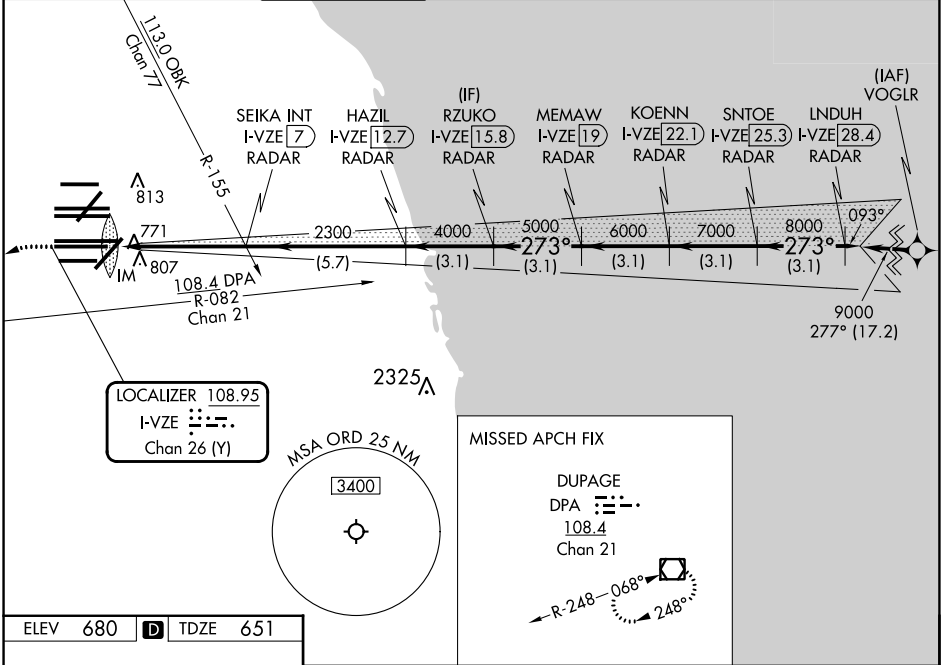
From VOTLR: RNAV 1-GPS required.
Aircraft not GPS equipped - RADAR required for procedure entry.
DME or RADAR required.

Simultaneous approach authorized. Requires specific OPSPEC, MSPEC, or LOA approval and use of HUD to DH.

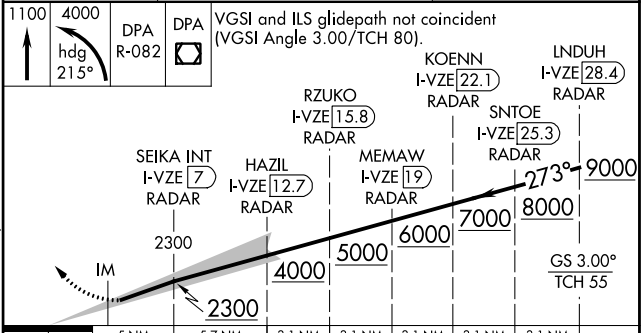
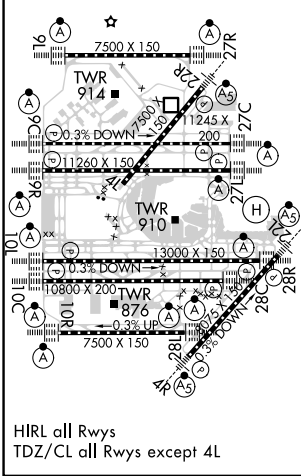


MISSED APPROACH: Climb to 1100 then climbing left turn to 4000 on heading 215° and DPA VOR/DME R-082 to DPA VOR/DME and hold.

D-ATIS 135.4 282.225	CHICAGO APP CON 119.0 292.125	O'HARE TOWER 120.75 348.0	GND CON (TWR NORTH) 124.125 (TWR SOUTH) 118.05 (ALL TWRs) 226.675	(TWR CENTER) (OBND) 121.75 (IBND) 121.9	CLNC DEL 121.6	CPDLC
--	---	-------------------------------------	---	--	--------------------------	-------



ELEV 680	D	TDZE 651
-----------------	----------	-----------------



CATEGORY	A	B	C	D
S-ILS 28C	RA 155/14 150 DA 801			

SA CATEGORY I ILS - SPECIAL AIRCREW & AIRCRAFT CERTIFICATION REQUIRED

EC-3, 11 JUL 2024 to 08 AUG 2024

EC-3, 11 JUL 2024 to 08 AUG 2024