

LOC/DME I-OYG 111.9 Chan 56	APP CRS 093°	Rwy Idg 11245 TDZE 673 Apt Elev 680
--	------------------------	--

ILS RWY 9C (SA CAT I)
CHICAGO O'HARE INTL (ORD)

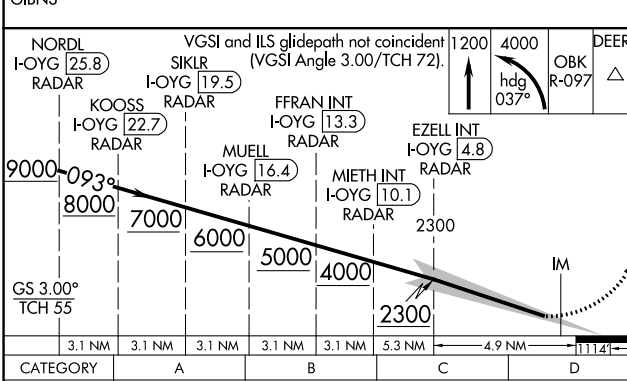
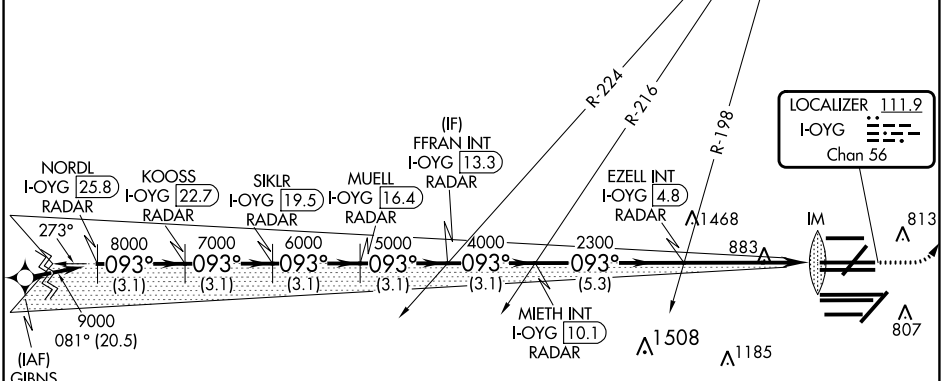
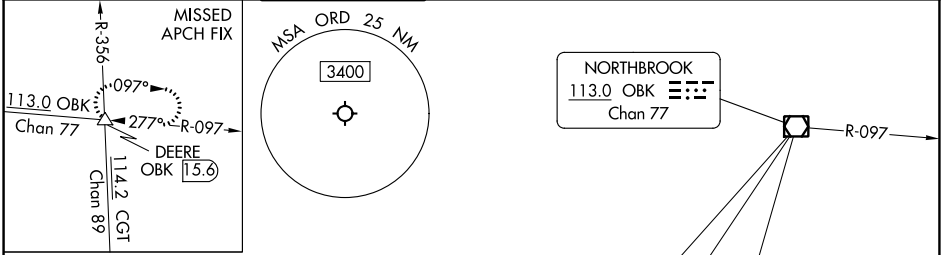
DME or RADAR required. From GIBNS: RNAV 1-GPS required. Aircraft not GPS equipped - RADAR required for procedure entry.

ALSF-2
(A)

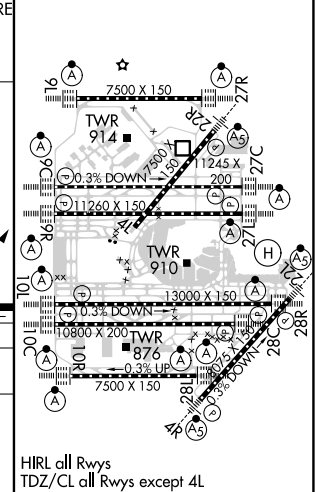
MISSED APPROACH: Climb to 1200 then climbing left turn to 4000 on heading 037° and OBK VOR/DME R-097 to DEERE INT/ OBK 15.6 DME and hold.

Simultaneous approach authorized. Requires specific OPSPEC, MSPEC or LOA approval.

D-ATIS 135.4 282.225	CHICAGO APP CON 119.0 292.125	O'HARE TOWER 121.15 348.0	124.125 118.05 226.675 (ALL TWRS)	GND CON (TWR NORTH) 121.75 (OBND) 121.9 (IBND)	CLNC DEL 121.6	CPDLC
--	---	-------------------------------------	--	--	--------------------------	-------



ELEV 680	D	TDZE 673
----------	---	----------



CATEGORY A

S-ILS 9C

RA 154/14 150 DA 823

SA CATEGORY I ILS - SPECIAL AIRCREW & AIRCRAFT CERTIFICATION REQUIRED

EC-3, 11 JUL 2024 to 08 AUG 2024

EC-3, 11 JUL 2024 to 08 AUG 2024