

LOC/DME I-SXH 108.95 Chan 26(Y)	APP CRS 093°	Rwy ldg TDZE 669 Apt Elev 680
--	------------------------	---

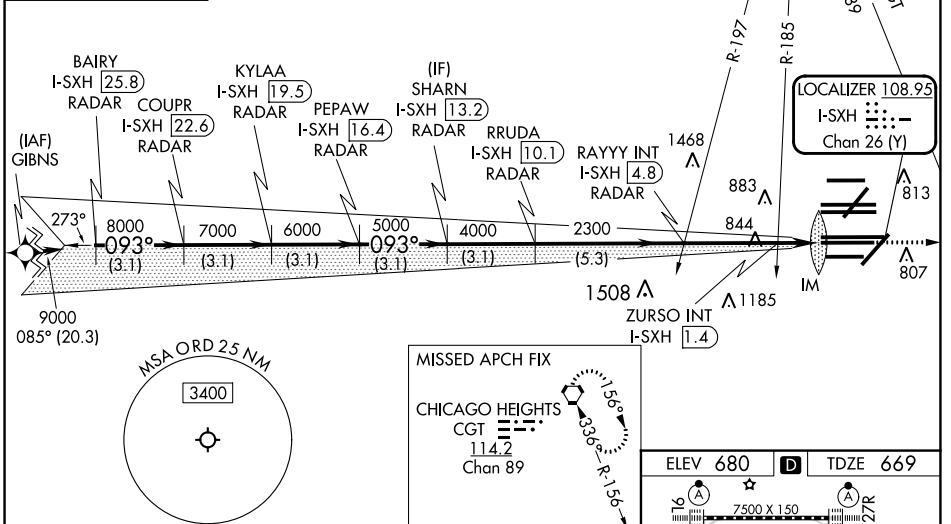
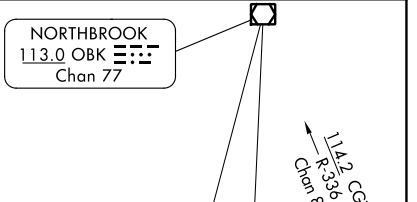
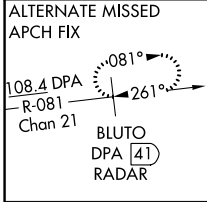
ILS or LOC RWY 10C

CHICAGO O'HARE INTL (ORD)

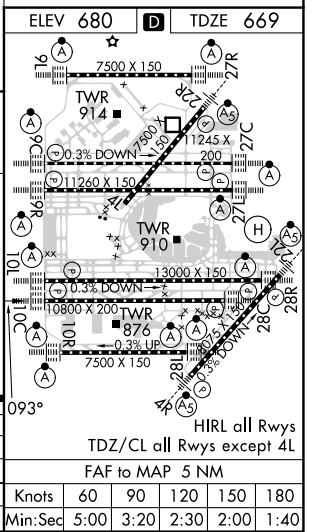
From GIBNS: RNAV-1 GPS required.
 RNAV 1-GPS or RADAR required for procedure entry. DME or RADAR required.
 Simultaneous approach authorized.

ALSf-2
 MISSED APPROACH: Climb to 4000 on heading 093° and CGT VORTAC R-336 to CGT VORTAC and hold.

D-ATIS 135.4 282.225	CHICAGO APP CON 119.0 292.125	O'HARE TOWER 120.75 348.0	GND CON (TWR CENTER) 124.125 (TWR NORTH) 118.05 (TWR SOUTH) 226.675 (ALL TWRs)	(TWR CENTER) 121.75 (OBND) 121.9 (IBND)	CLNC DEL 121.6	CPDLC
--	---	-------------------------------------	--	---	--------------------------	-------



BAIRY I-SXH 25.8 RADAR	VGSI and ILS glidepath not coincident KYLAA (VGSI Angle 3.00/TCH 75).	4000	hdg 093°	CGT R-336	CGT
COUPR I-SXH 22.6 RADAR	SHARN I-SXH 13.2 RADAR	RAYYY INT I-SXH 4.8	*LOC only		
9000 093°	PEPAW I-SXH 16.4 RADAR	RRUDA I-SXH 10.1 RADAR	I-SXH DME ANTENNA		
8000	ZURSO INT I-SXH 1.4	IM	I-SXH 0.2		
7000	3.1 NM	3.1 NM	3.1 NM	3.1 NM	3.1 NM
6000	3.1 NM	3.1 NM	3.1 NM	3.1 NM	3.1 NM
5000	3.1 NM	3.1 NM	3.1 NM	3.1 NM	3.1 NM
4000	3.1 NM	3.1 NM	3.1 NM	3.1 NM	3.1 NM
2300	5.3 NM	3.4 NM	1.5 NM	0.1 NM	
GS 3.00° TCH 55					
CATEGORY	A		B		C
S-ILS 10C	869/18		200 (200-½)		
S-LOC 10C	1220/24 551 (600-½)		1220/60 551 (600-1¼)		
ZURSO FIX MINIMUMS (DUAL VOR RECEIVERS OR DME REQUIRED)					
S-LOC 10C	1100/24 431 (500-½)		1100/40 431 (500-¾)		



EC-3, 11 JUL 2024 to 08 AUG 2024

EC-3, 11 JUL 2024 to 08 AUG 2024