

LOC/DME I-MED 111.1 Chan 48	APP CRS 093°	Rwy ldg 12246 TDZE 672 Apt Elev 680
---	------------------------	--

ILS or LOC RWY 10L

CHICAGO O'HARE INTL (ORD)

From GIBNS: RNAV-1 GPS required.

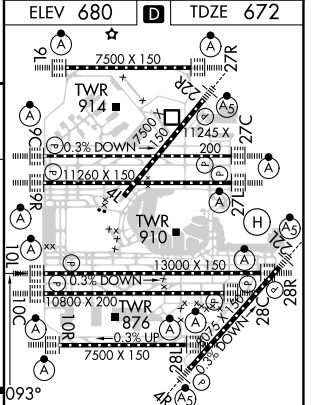
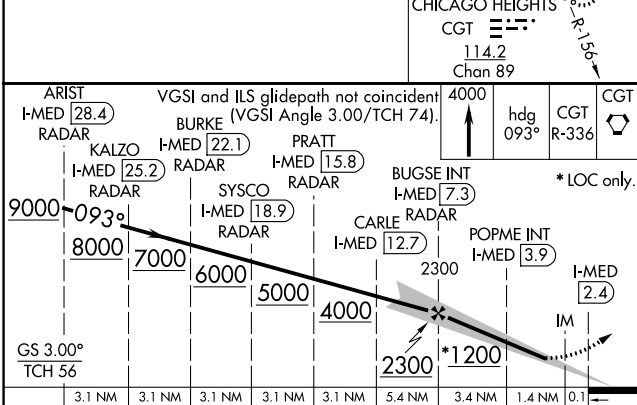
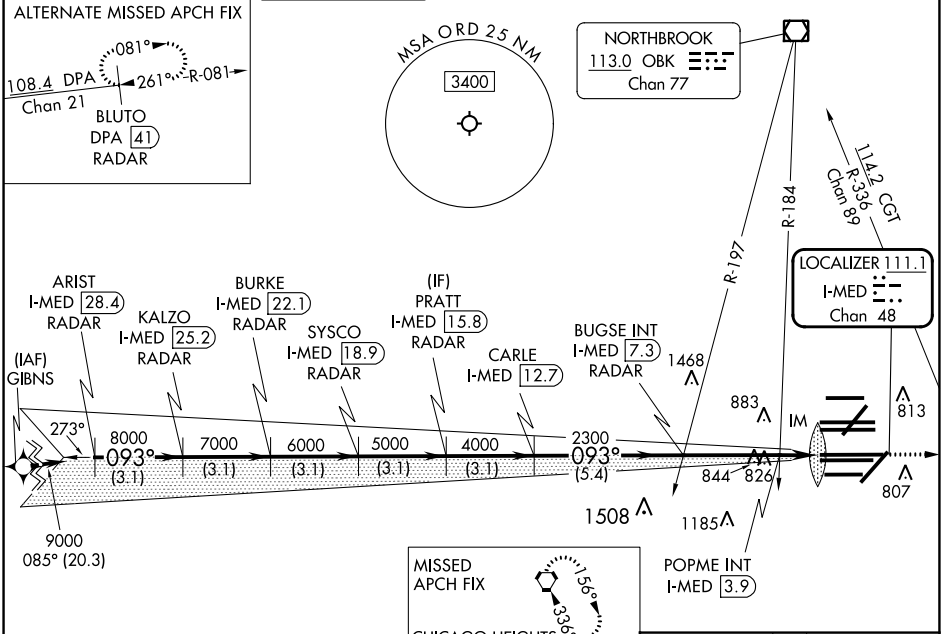
RNAV 1-GPS or RADAR required for procedure entry. DME or RADAR required.

ALSF-2

MISSED APPROACH: Climb to 4000 on heading 093° and CGT VORTAC R-336 to CGT VORTAC and hold.

Simultaneous approach authorized.

D-ATIS 135.4 282.225	CHICAGO APP CON 119.0 292.125	O'HARE TOWER 132.7 348.0	GND CON (TWR CENTER) 124.125 (TWR NORTH) 118.05 (TWR SOUTH) 226.675 (ALL TWRS)	(TWR CENTER) 121.75 (OBND) 121.9 (IBND)	CLNC DEL 121.6	CPDLC
--	---	------------------------------------	--	---	--------------------------	-------



ELEV 680	TDZE 672
*LOC only.	
CGT	CGT
hdg 093°	CGT R-336
HRTL all Rwys	
TDZ/CL all Rwys except 4L	
FAF to MAP 4.9 NM	
POPME FIX MINIMUMS (DUAL VOR RECEIVERS OR DME REQUIRED)	
S-LOC 10L	1200/24 528 (600-½)
S-LOC 10L	1080/24 408 (400-½)
S-LOC 10L	1080/40 408 (400-¾)
Knots	60 90 120 150 180
Min:Sec	4:54 3:16 2:27 1:58 1:38

EC-3, 11 JUL 2024 to 08 AUG 2024

EC-3, 11 JUL 2024 to 08 AUG 2024