

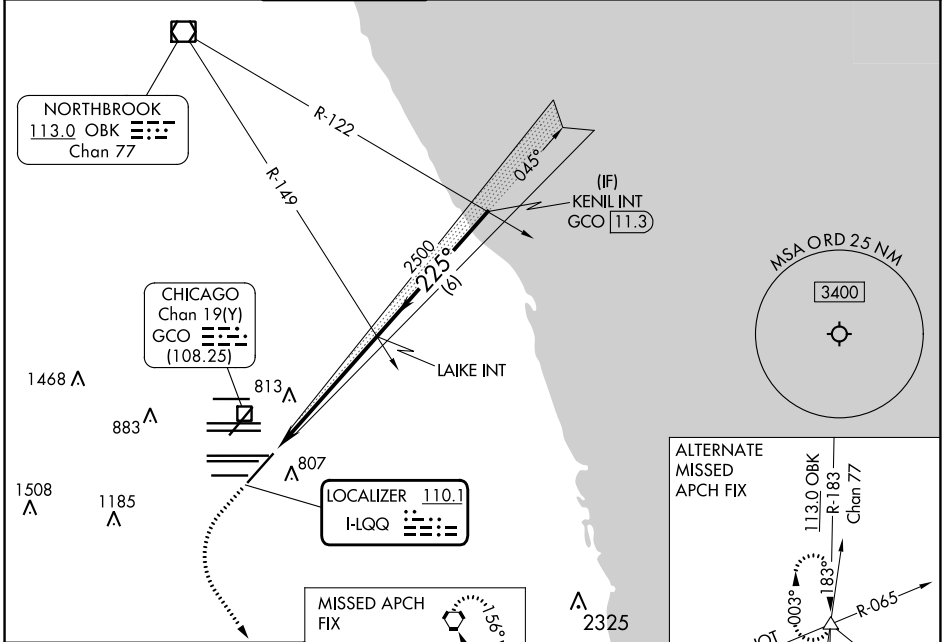
LOC I-LQQ 110.1	APP CRS 225°	Rwy ldg TDZE Apt Elev	8075 654 680
---------------------------	------------------------	-----------------------------	---

ILS or LOC RWY 22L

CHICAGO O'HARE INTL (ORD)

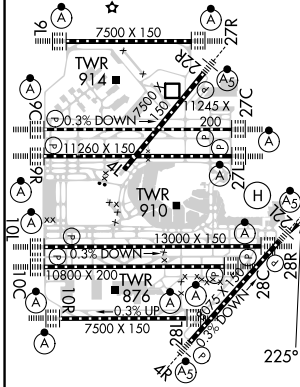
RADAR required for procedure entry.		MALSR	MISSED APPROACH: Climb to 1100 then climbing left turn to 4000 direct CGT VORTAC and hold.	
Simultaneous approach authorized.				

D-ATIS 135.4 282.225	CHICAGO APP CON 119.0 292.125	O'HARE TOWER 120.75 348.0	124.125 GND CON (TWR NORTH) 118.05 (TWR SOUTH) 226.675 (ALL TWRs)	(TWR CENTER) 121.75 (OBND) 121.9 (IBND)	CLNC DEL 121.6	CPDLC
--	---	-------------------------------------	--	---	--------------------------	-------



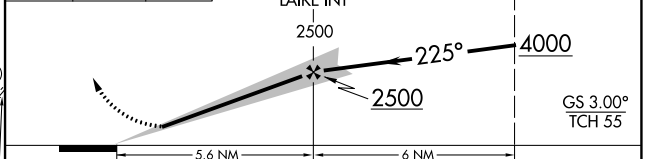
ELEV 680	D	TDZE 654
----------	----------	----------

TDZ/Cl all Rwy's except 4L
HIRL all Rwy's



MISSED APCH FIX	
CHICAGO HEIGHTS	
CGT	114.2
	Chan 89

1100	4000	CGT	VGSI and ILS glidepath not coincident (VGSI Angle 3.00°/TCH 73).



	5.6 NM		6 NM	
CATEGORY	A	B	C	D
S-ILS 22L	854/18 200 (200-1/2)			
S-LOC 22L	1120/24	466 (500-1/2)	1120/50	466 (500-1)
C CIRCLING	1220-1	540 (600-1)	1220-1 1/2	1460-2 1/2
			540 (600-1 1/2)	780 (800-2 1/2)