

LOC/DME I-VQX <b>110.75</b> Chan 44(Y)	APP CRS <b>274°</b>	Rwy ldg TDZE Apt Elev	<b>7500</b> <b>667</b> <b>680</b>
--	------------------------	-----------------------------	---

# ILS or LOC RWY 28L

CHICAGO O'HARE INTL (ORD)

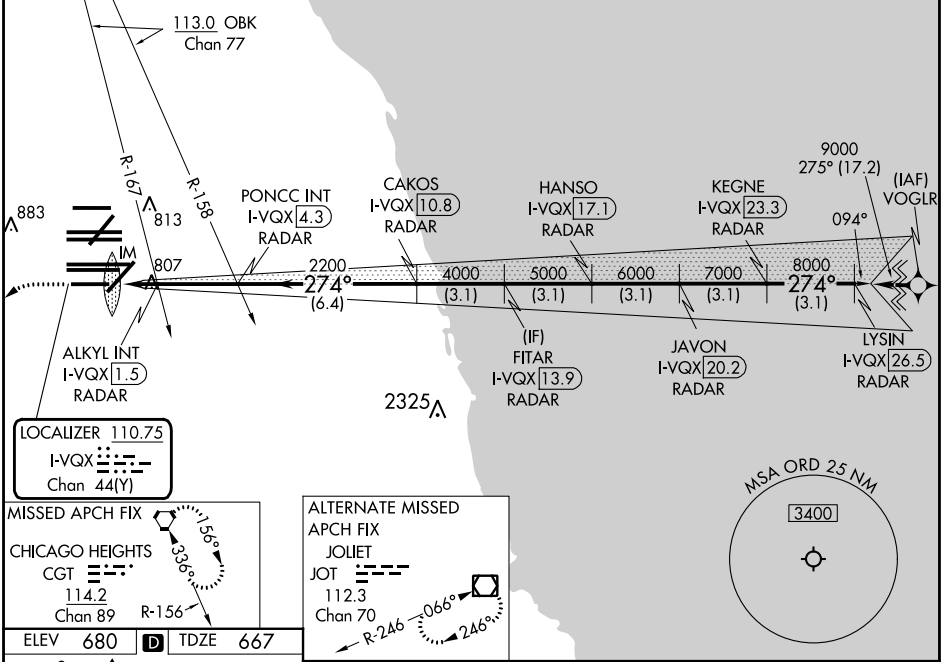
Aircraft not GPS equipped - RADAR required for procedure entry. DME or RADAR required.  
From VOGLR: RNAV 1-GPS required.

Simultaneous approach authorized.

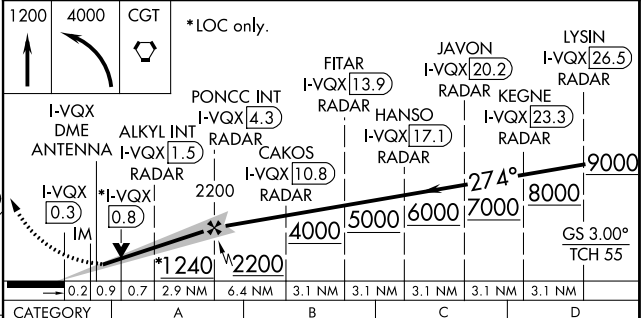
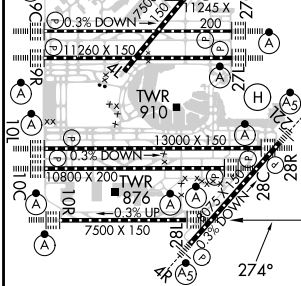
ALSf-2

MISSED APPROACH: Climb to 1200 then climbing left turn to 4000 direct CGT VORTAC and hold.

D-ATIS <b>135.4</b> <b>282.225</b>	CHICAGO APP CON <b>119.0 292.125</b>	O'HARE TOWER <b>133.0 348.0</b>	GND CON (TWR CENTER) <b>124.125</b> (TWR NORTH) <b>118.05</b> (TWR SOUTH) <b>226.675</b> (ALL TWRS)	(TWR CENTER) <b>121.75</b> (OBND) <b>121.9</b> (IBND)	CLNC DEL <b>121.6</b>	CPDLC
--	---	------------------------------------	--	---	--------------------------	-------



ELEV 680	TDZE 667
----------	----------



HIRL all Rwy's TDZ/CL all Rwy's except 4L	FAF to MAP 4.7 NM
Knots Min:Sec	60 90 120 150 180 4:42 3:08 2:21 1:53 1:34
S-ILS 28L	867/18 200 (200-½)
S-LOC 28L	1240/24 573 (600-½) 1240-1/4 573 (600-1/4)
ALKYL FIX MINIMUMS (DUAL VOR RECEIVERS OR DME REQUIRED)	
S-LOC 28L	1060/24 393 (400-½) 1060/35 393 (400-5/8)

EC-3, 11 JUL 2024 to 08 AUG 2024

EC-3, 11 JUL 2024 to 08 AUG 2024