

ILS PRM RWY 28C (SA CAT I)

(CLOSE PARALLEL)

CHICAGO O'HARE INTL (ORD)

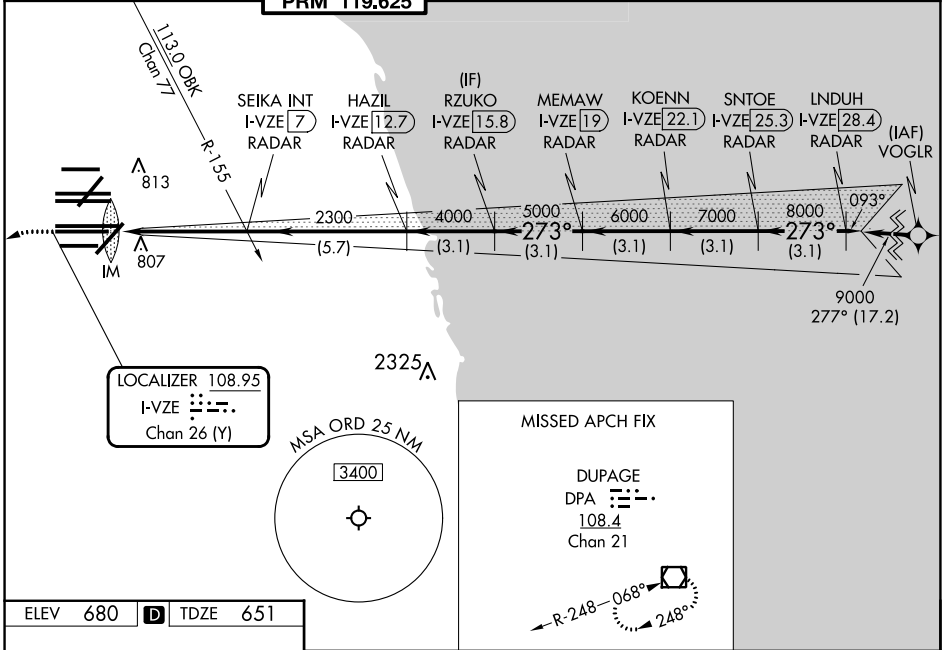
LOC/DME I-VZE 108.95 Chan 26 (Y)	APP CRS 273°	Rwy ldg 10800 TDZE 651 Apt Elev 680
--	------------------------	--

Aircraft not GPS equipped - RADAR required for procedure entry.
DME or RADAR required.
From VOGLR: RNAV 1-GPS required.

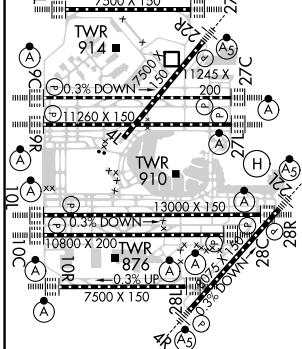
ALSF-2 	MISSED APPROACH: Climb to 1100 then climbing left turn to 4000 on heading 215° and DPA VOR/DME R-082 to DPA VOR/DME and hold.
------------	--

Simultaneous approach authorized. Use of FD or AP required during simultaneous operations. Dual VHF comm required. See additional requirements on AAUP.
Requires specific OPSPEC, MSPEC, or LOA approval and use of HUD to DH.

D-ATIS 135.4 282.225	CHICAGO APP CON 119.0 292.125	O'HARE TOWER 120.75 348.0 PRM 119.625	GND CON (TWR CENTER) 121.75 (OBND) 121.9 (IBND)	CLNC DEL 121.6	CPDLC
--	---	---	---	--------------------------	-------



ELEV 680	D	TDZE 651
-----------------	----------	-----------------



1100	4000	DPA R-082	DPA	VGSI and ILS glidepath not coincident (VGSI Angle 3.00/TCH 80).
↑	hdg 215°			
		SEIKA INT I-VZE 7 RADAR	HAZIL I-VZE 12.7 RADAR	RZUKO I-VZE 15.8 RADAR
		MEMAW I-VZE 19 RADAR	KOENN I-VZE 22.1 RADAR	SNTOE I-VZE 25.3 RADAR
		LINDUH I-VZE 28.4 RADAR		
		2300	4000	5000
		2300	273°	9000
		GS 3.00°	TCH 55	
		1044'	5 NM	5.7 NM
		3.1 NM	3.1 NM	3.1 NM
		3.1 NM	3.1 NM	3.1 NM
CATEGORY	A	B	C	D
S-ILS 28C	RA 155/14 150 DA 801			

SA CATEGORY I ILS - SPECIAL AIRCREW & AIRCRAFT CERTIFICATION REQUIRED

EC-3, 11 JUL 2024 to 08 AUG 2024

EC-3, 11 JUL 2024 to 08 AUG 2024