

LOC/DME I-HZJ 110.75 Chan 44 (Y)	APP CRS 094°	Rwy Idg 7500 TDZE 680 Apt Elev 680
---	------------------------	---

ILS Z RWY 10R (CAT II & III)

CHICAGO O'HARE INTL (ORD)

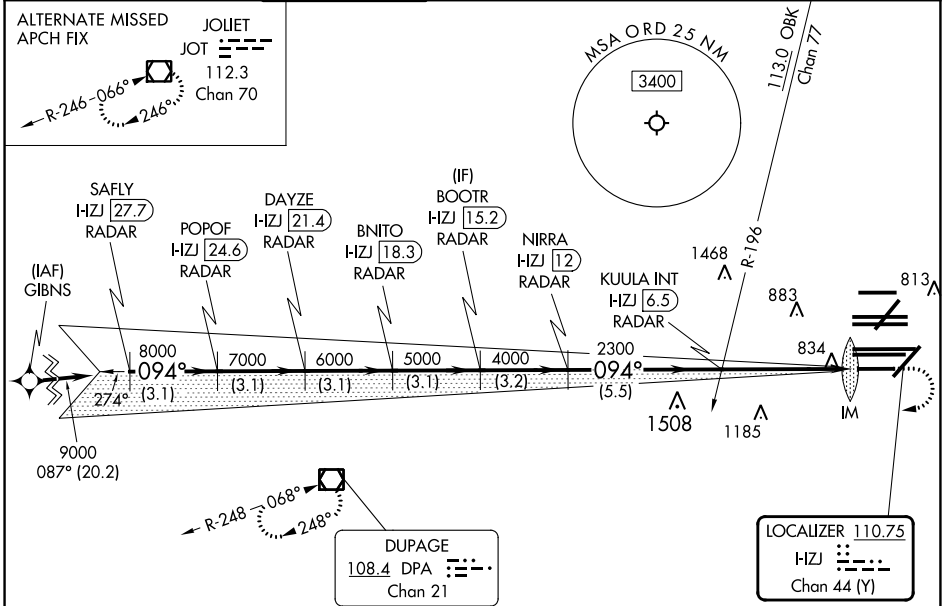
RNAV 1-GPS or RADAR required for procedure entry. DME or RADAR required.
From GIBNS: RNAV-1 GPS required.

Simultaneous approach authorized. CAT II: RVR 1000 authorized with specific OPSPEC, MSPEC, or LOA approval and use of autoland or HUD to touchdown.

ALSF-2

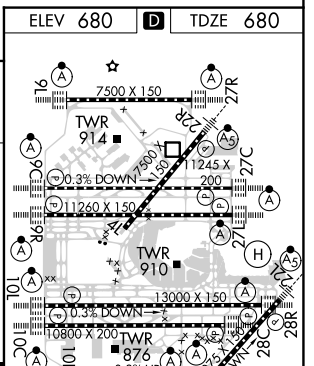
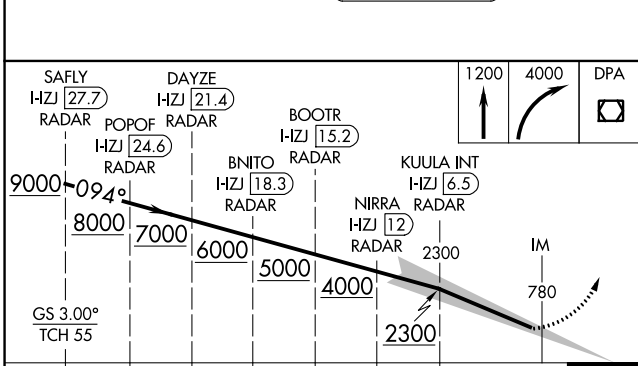
MISSED APPROACH: Climb to 1200 then climbing right turn to 4000 direct DPA VOR/DME and hold.

D-ATIS 135.4 282.225	CHICAGO APP CON 119.0 292.125	O'HARE TOWER 133.0 348.0	GND CON (TWR CENTER) 124.125 (TWR NORTH) 118.05 (TWR SOUTH) 226.675 (ALL TWRs)	(TWR CENTER) (OBND) 121.75 (IBND) 121.9	CLNC DEL 121.6	CPDLC
--	---	------------------------------------	--	---	--------------------------	-------



EC-3, 11 JUL 2024 to 08 AUG 2024

EC-3, 11 JUL 2024 to 08 AUG 2024



3.1 NM	3.1 NM	3.1 NM	3.1 NM	3.2 NM	5.5 NM	4.9 NM	1113'
CATEGORY	A		B		C		D
S-ILS 10R	CAT II RA 110/12		100 DA 780				
S-ILS 10R	CAT III RVR 06						

CATEGORY II & III ILS - SPECIAL AIRCREW & AIRCRAFT CERTIFICATION REQUIRED

