

LOC/DME I-HZJ <b>110.75</b> Chan 44 (Y)	APP CRS <b>094°</b>	Rwy ldg <b>7500</b> TDZE <b>680</b> Apt Elev <b>680</b>
---	------------------------	---

# ILS Z or LOC Z RWY 10R

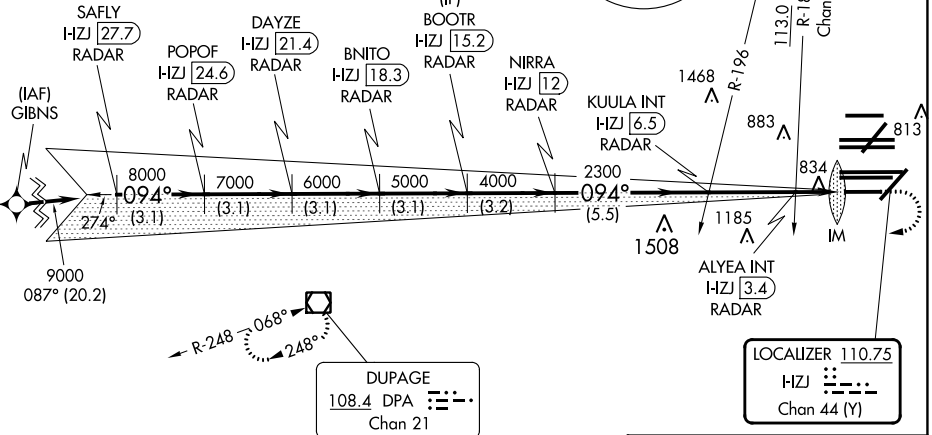
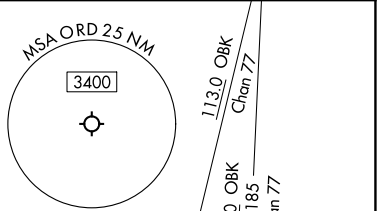
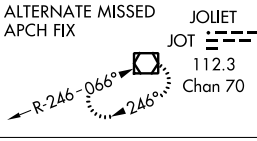
CHICAGO O'HARE INTL (ORD)

RNAV 1-GPS or RADAR required for procedure entry. DME or RADAR required.  
 From GIBNS: RNAV-1 GPS required.  
 Simultaneous approach authorized.  
 For inop ALS, increase S-LOC 10R Cat C and D visibility to RVR 6000.

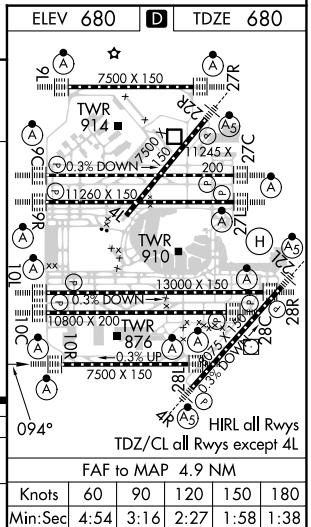


MISSED APPROACH: Climb to 1200 then climbing right turn to 4000 direct DPA VOR/DME and hold.

D-ATIS <b>135.4</b> <b>282.225</b>	CHICAGO APP CON <b>119.0 292.125</b>	O'HARE TOWER <b>133.0 348.0</b>	GND CON (TWR CENTER) <b>124.125</b> (TWR NORTH) <b>118.05</b> (TWR SOUTH) <b>226.675</b> (ALL TWRS)	(TWR CENTER) <b>121.75</b> (OBND) <b>121.9</b> (IBND)	CLNC DEL <b>121.6</b>	CPDLC
--	---	------------------------------------	--	---	--------------------------	-------



	SAFLY I-HZJ 27.7 RADAR	POPOF I-HZJ 24.6 RADAR	DAYZE I-HZJ 21.4 RADAR	BNITO I-HZJ 18.3 RADAR	NIIRRA I-HZJ 12 RADAR	KUULA INT I-HZJ 6.5 RADAR	ALYEA INT I-HZJ 3.4 RADAR	BOOTR I-HZJ 15.2 RADAR	
	9000	8000	7000	6000	5000	4000	2300	1200	4000
	094°	094°	094°	094°	094°	094°	094°	094°	094°
	3.1 NM	3.1 NM	3.1 NM	3.1 NM	3.2 NM	5.5 NM	3.1 NM	0.7 NM	0.1 NM
CATEGORY	A			B		C		D	
S-ILS 10R	880/18			200 (200-½)					
S-LOC 10R	1100/24			420 (500-½)					



EC-3, 11 JUL 2024 to 08 AUG 2024

EC-3, 11 JUL 2024 to 08 AUG 2024