

(JVL.JVL1) 23334

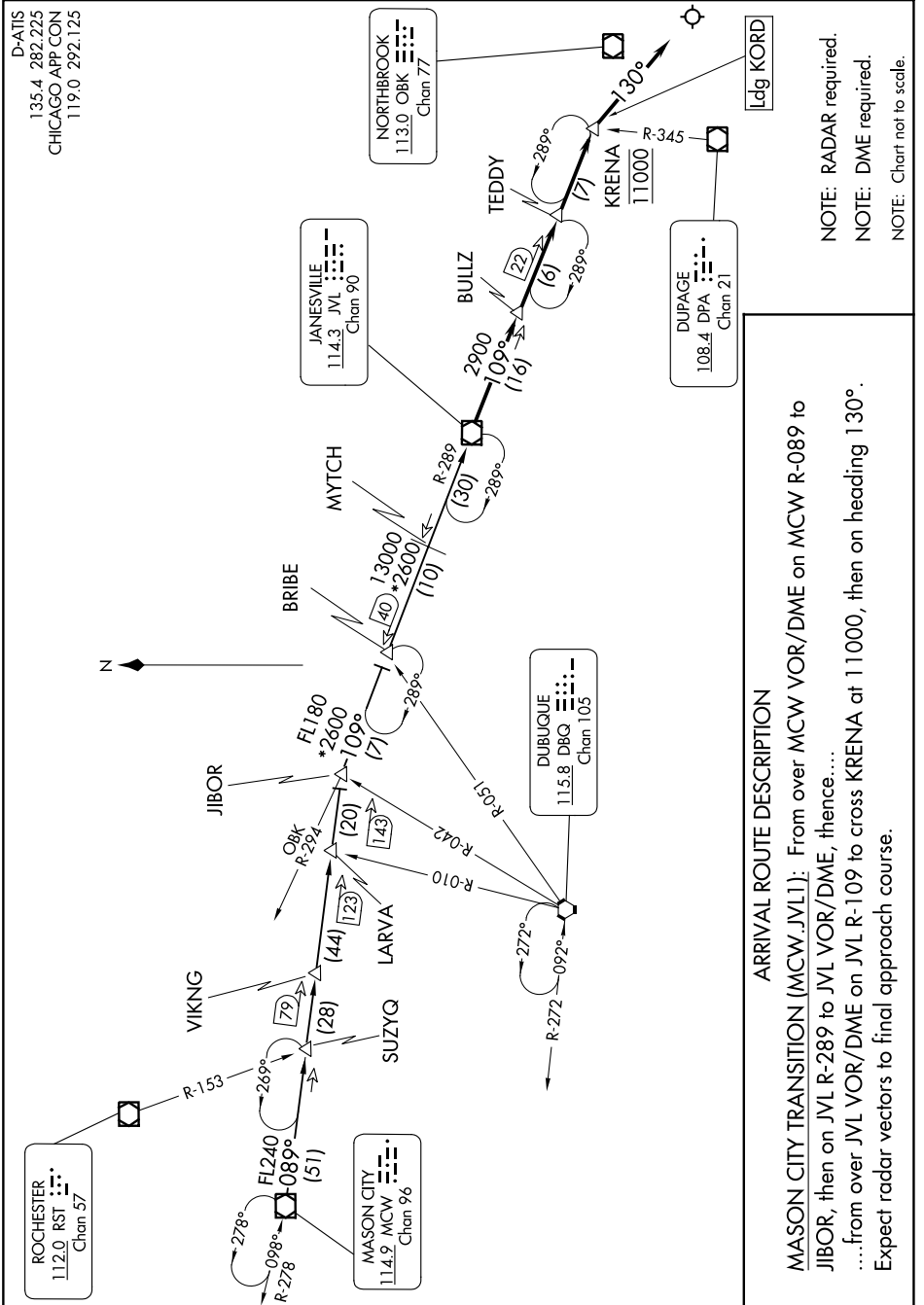
JANESVILLE ONE ARRIVAL

AL-166 (FAA)

CHICAGO O'HARE INTL (ORD)

CHICAGO, ILLINOIS

EC-3, 11 JUL 2024 to 08 AUG 2024



NOTE: RADAR required.
 NOTE: DME required.
 NOTE: Chart not to scale.

ARRIVAL ROUTE DESCRIPTION

MASON CITY TRANSITION (MCW.JVL1): From over MCW VOR/DME on MCW R-089 to JIBOR, then on JVL R-289 to JVL VOR/DME, thence...
 ...from over JVL VOR/DME on JVL R-109 to cross KRENA at 11000, then on heading 130°. Expect radar vectors to final approach course.

JANESVILLE ONE ARRIVAL

(JVL.JVL1) 07OCT21

CHICAGO, ILLINOIS
CHICAGO O'HARE INTL (ORD)

EC-3, 11 JUL 2024 to 08 AUG 2024