

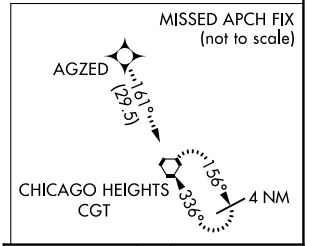
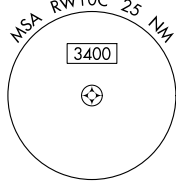
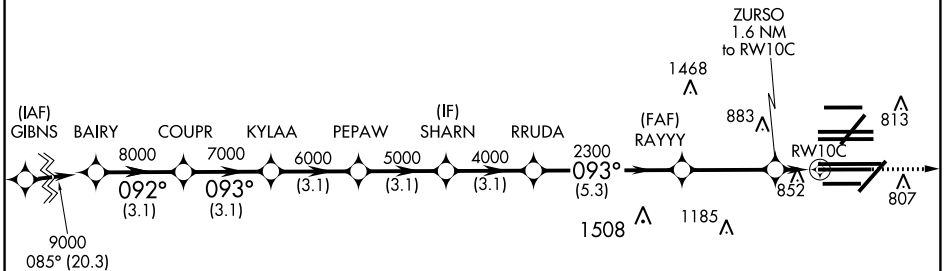
WAAS CH <b>81934</b> <b>W10B</b>	APP CRS <b>093°</b>	Rwy Idg <b>10540</b> TDZE <b>669</b> Apt Elev <b>680</b>
--	------------------------	--

# RNAV (GPS) RWY 10C

CHICAGO O'HARE INTL (ORD)

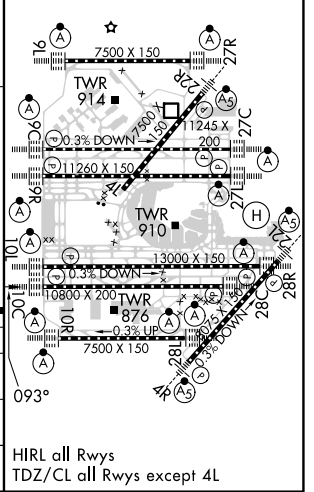
RNP APCH - GPS.		ALSIF-2		MISSED APPROACH: Climb to 4000 direct AGZED and on track 161° to CGT VORTAC and hold.	
<p>Simultaneous approach authorized. For uncompensated Baro-VNAV systems, LNAV/VNAV NA below -19°C or above 54°C. LNAV procedure NA during simultaneous operations. Use of FD or AP required during simultaneous operations. Rwy 10C helicopter visibility reduction below RVR 4000 NA.</p>		<p>(TWR CENTER) <b>121.75</b> (OBND) <b>121.9</b> (IBND)</p>		<p>CPDLC</p>	
D-ATIS <b>135.4</b> <b>282.225</b>	CHICAGO APP CON <b>119.0 292.125</b>	O'HARE TOWER <b>120.75 348.0</b>	GND CON (TWR NORTH) <b>124.125</b> (TWR SOUTH) <b>118.05</b> (ALL TWRs) <b>226.675</b>	CLNC DEL <b>121.6</b>	

## RADAR REQUIRED



ELEV 680	<b>D</b>	TDZE 669
----------	----------	----------

VGSI and RNAV glidepath not coincident (VGSI Angle 3.00/TCH 75).		4000	AGZED	tr 161°	CGT			
BAIRY	COUPR	KYLAA	PEPAW	SHARN	RRUDA	RAYYY	ZURSO	RWY 10C
9000	8000	7000	6000	5000	4000	2300	1220	
GP 3.00° TCH 55								
	3.1 NM	3.1 NM	3.1 NM	3.1 NM	3.1 NM	-5.3 NM	-3.4 NM	1.6 NM
CATEGORY	A		B		C		D	
LPV DA	869/18		200 (200-½)					
LNAV/VNAV DA	1062/40		393 (400-¾)					
LNAV MDA	1120/24	451 (500-½)	1120/45	451 (500-¾)				



EC-3, 11 JUL 2024 to 08 AUG 2024

EC-3, 11 JUL 2024 to 08 AUG 2024