

| | | |
|--|------------------------|--|
| WAAS CH 42634 W28B | APP CRS 273° | Rwy Idg 10800 TDZE 651 Apt Elev 680 |
|--|------------------------|--|

RNAV (GPS) RWY 28C

CHICAGO O'HARE INTL (ORD)

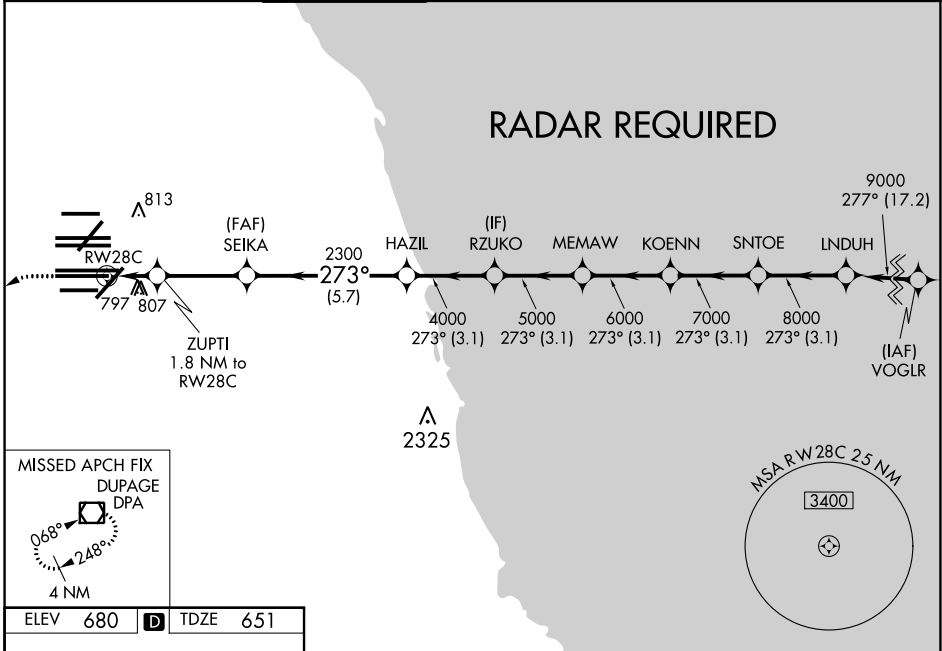
▼ DME/DME RNP-0.3 NA. Simultaneous approach authorized. For uncompensated Baro-VNAV systems, LNAV/VNAV NA below -19°C (-2°F) or above 54°C (130°F). LNAV procedure NA during simultaneous operations. Use of FD or AP providing RNAV track guidance required during simultaneous operations. For inop ALSF, increase LNAV Cat C and D visibility to RVR 6000.

ALSF-2



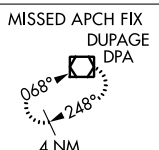
MISSED APPROACH:
Climb to 1100 then
climbing left turn to
4000 direct DPA
VOR/DME and hold.

| | | | | | | |
|--|--|-------------------------------------|---|---|--------------------------|-------|
| D-ATIS 135.4 282.225 | CHICAGO APP CON 119.0 292.125 | O'HARE TOWER 120.75 348.0 | 124.125 GND CON 118.05 (TWR NORTH) 226.675 (TWR SOUTH) (ALL TWRs) | (TWR CENTER) 121.75 (OBND) 121.9 (IBND) | CLNC DEL 121.6 | CPDLC |
|--|--|-------------------------------------|---|---|--------------------------|-------|

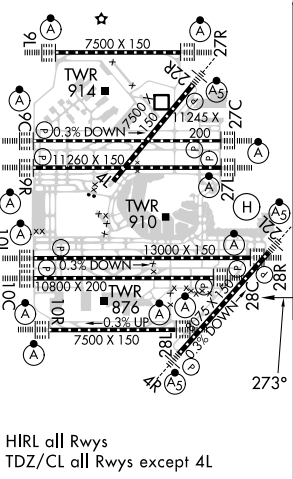


EC-3, 11 JUL 2024 to 08 AUG 2024

EC-3, 11 JUL 2024 to 08 AUG 2024



| | | |
|-----------------|----------|-----------------|
| ELEV 680 | D | TDZE 651 |
|-----------------|----------|-----------------|



| | | | | | | |
|-----------------------------|---------|-------------|--|-------------|--------|--------------------|
| 1100 | 4000 | DPA | VGSi and RNAV glidepath not coincident (VGSi Angle 3.00/TCH 80). | | | |
| *LNAV only. | | | | | | |
| ZUPTI 1.8 NM to RW28C | SEIKA | HAZIL | RZUKO | MEMAW | KOENN | SNTOE LNDUH |
| *1 NM to RW28C | 2300 | 4000 | 5000 | 6000 | 7000 | 8000 9000 |
| RW28C | *1260 | 2300 | | | | GP 3.00° TCH 55 |
| | -1 NM - | 0.8 | 3.2 NM - | 5.7 NM - | 3.1 NM | 3.1 NM |
| CATEGORY | A | B | C | D | | |
| LPV DA | | 851/18 | 200 (200-½) | | | |
| LNAV/VNAV DA | | 1094/50 | 443 (500-1) | | | |
| LNAV MDA | 1060/24 | 409 (400-½) | 1060/40 | 409 (400-¾) | | |