

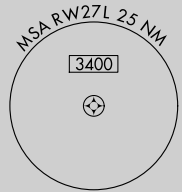
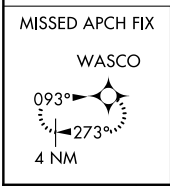
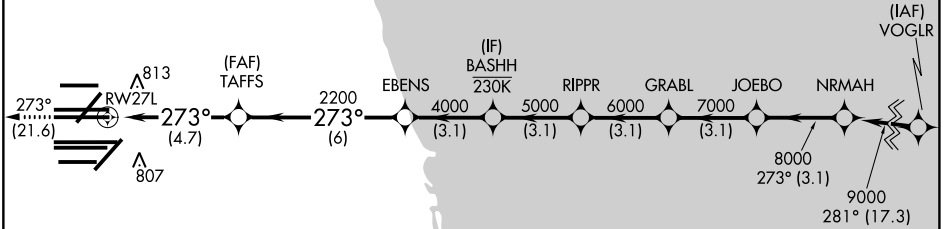
APP CRS	Rwy Idg	11260
273°	TDZE	654
	Apt Elev	680

RNAV (RNP) Y RWY 27L

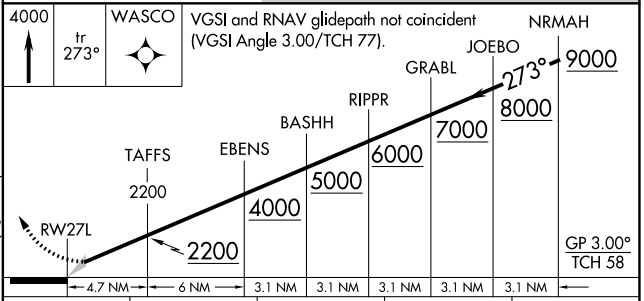
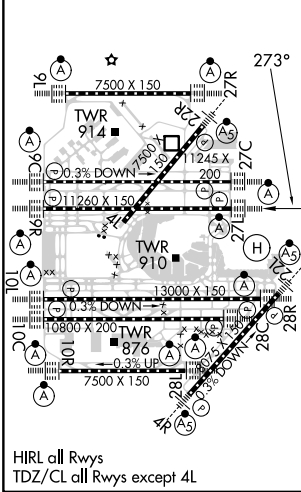
CHICAGO O'HARE INTL (ORD)

RNP AR APCH - GPS.				MISSED APPROACH: Climb to 4000 on track 273° to WASCO and hold.			
Simultaneous approach authorized. Use of FD or AP required during simultaneous operations. For uncompensated Baro-VNAV systems, procedure NA below -19°C or above 54°C.		D-ATIS	CHICAGO APP CON	O'HARE TOWER	GND CON (TWR CENTER)	CLNC DEL	CPDLC
135.4	119.0 292.125	126.9 348.0	124.125 (TWR NORTH) 118.05 (TWR SOUTH) 226.675 (ALL TWRs)	121.75 (OBND) 121.9 (IBND)	121.6		

RADAR REQUIRED



ELEV	680	D	TDZE	654
------	------------	----------	------	------------



WASCO	VGSI and RNAV glidepath not coincident (VGSI Angle 3.00/TCH 77).	NRMAH	9000
tr 273°		GRABL	7000
		RIPPR	6000
		BASHH	5000
		EBENS	4000
		TAFFS	2200
		JOEBO	8000
		GP 3.00°	TCH 58
		Distance	4.7 NM, 6 NM, 3.1 NM, 3.1 NM, 3.1 NM, 3.1 NM
CATEGORY	A	B	C
RNP 0.15 DA		989/26	335 (400-½)
RNP 0.30 DA		1133/50	479 (500-1)

AUTHORIZATION REQUIRED

EC-3, 11 JUL 2024 to 08 AUG 2024

EC-3, 11 JUL 2024 to 08 AUG 2024