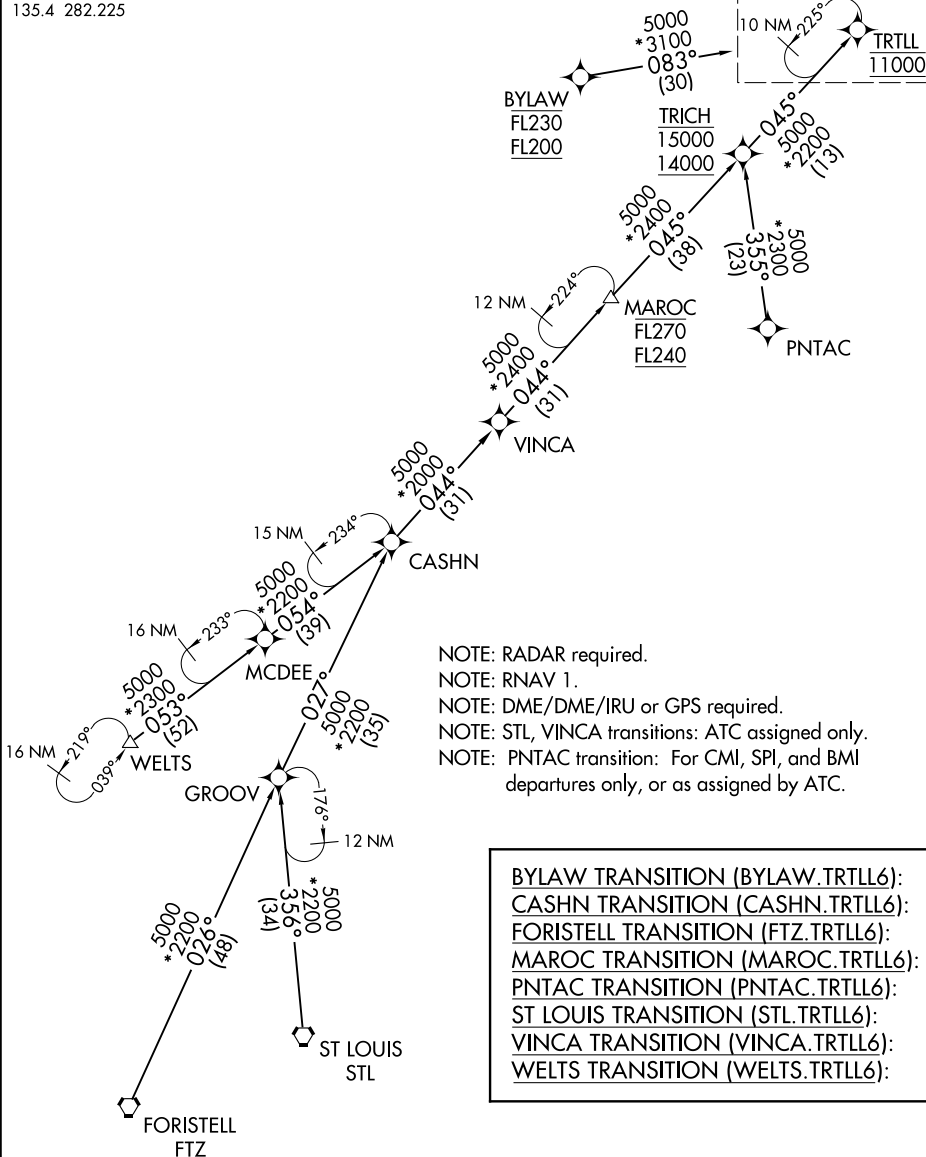


TRTLL SIX ARRIVAL (RNAV) Transition Routes

CHICAGO O'HARE INTL (ORD)
CHICAGO, ILLINOIS

CHICAGO APP CON
119.0 292.125
D-ATIS
135.4 282.225

See following page for
Arrival Routes



- NOTE: RADAR required.
- NOTE: RNAV 1.
- NOTE: DME/DME/IRU or GPS required.
- NOTE: STL, VINCA transitions: ATC assigned only.
- NOTE: PNTAC transition: For CMI, SPI, and BMI departures only, or as assigned by ATC.

BYLAW TRANSITION (BYLAW.TRLL6):
CASHN TRANSITION (CASHN.TRLL6):
FORISTELL TRANSITION (FTZ.TRLL6):
MAROC TRANSITION (MAROC.TRLL6):
PNTAC TRANSITION (PNTAC.TRLL6):
ST LOUIS TRANSITION (STL.TRLL6):
VINCA TRANSITION (VINCA.TRLL6):
WELTS TRANSITION (WELTS.TRLL6):

(CONTINUED ON FOLLOWING PAGE)

NOTE: Chart not to scale.

TRTLL SIX ARRIVAL (RNAV) Transition Routes

CHICAGO, ILLINOIS
CHICAGO O'HARE INTL (ORD)

EC-3, 11 JUL 2024 to 08 AUG 2024

EC-3, 11 JUL 2024 to 08 AUG 2024

TRTLL SIX ARRIVAL (RNAV) Arrival Routes

ARRIVAL ROUTE DESCRIPTION

From TRTLL on track 045° to HIHRY, then on track 045° to RINNO.

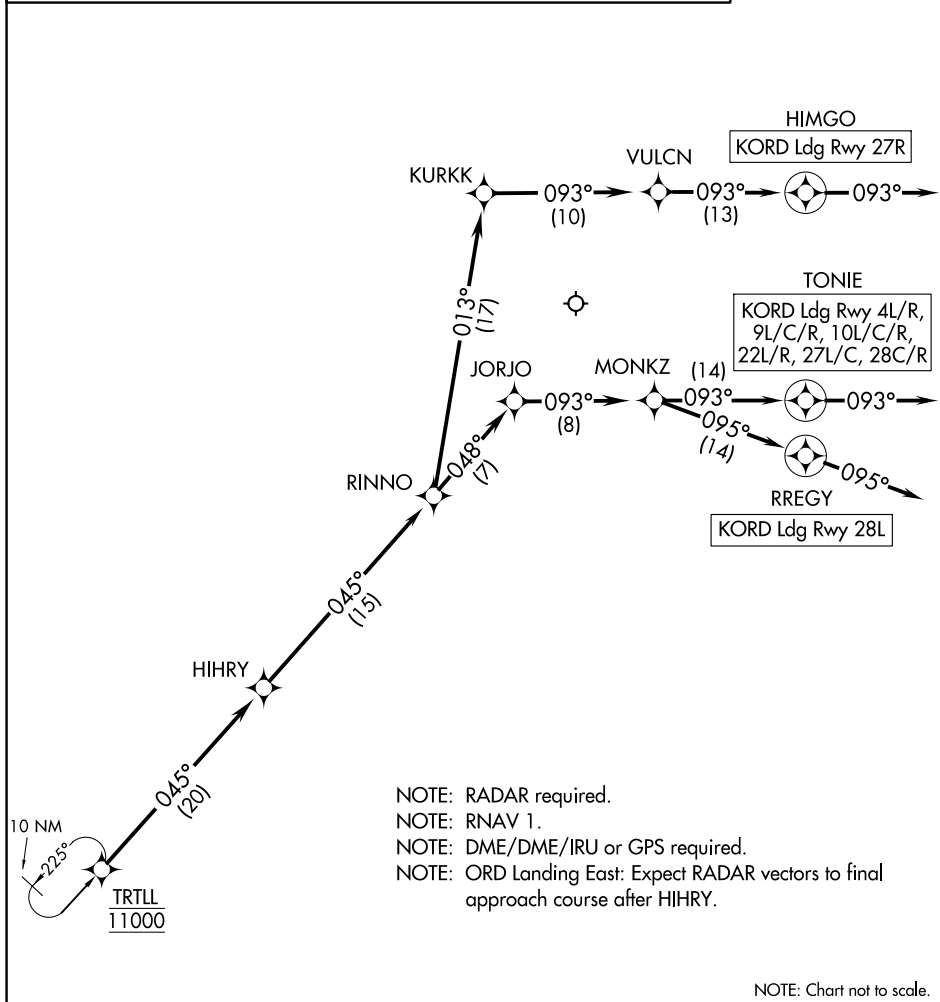
LANDING RWYS 4L/R, 9L/C/R, 10L/C/R, 22L/R, 27L/C, 28C/R:

From RINNO on track 048° to JORJO, then on track 093° to MONKZ, then on track 093° to TONIE, then on track 093°. Expect RADAR vectors to final approach course.

LANDING RWY 27R: From RINNO on track 013° to KURKK, then on track 093° to VULCN, then on track 093° to HIMGO, then on track 093°. Expect RADAR vectors to final approach course.

LANDING RWY 28L: From RINNO on track 048° to JORJO, then on track 093° to MONKZ, then on track 095° to RREGY, then on track 095°. Expect RADAR vectors to final approach course.

CHICAGO APP CON
119.0 292.125
D-ATIS
135.4 282.225



- NOTE: RADAR required.
- NOTE: RNAV 1.
- NOTE: DME/DME/IRU or GPS required.
- NOTE: ORD Landing East: Expect RADAR vectors to final approach course after HIHRY.

NOTE: Chart not to scale.

EC-3, 11 JUL 2024 to 08 AUG 2024

EC-3, 11 JUL 2024 to 08 AUG 2024