

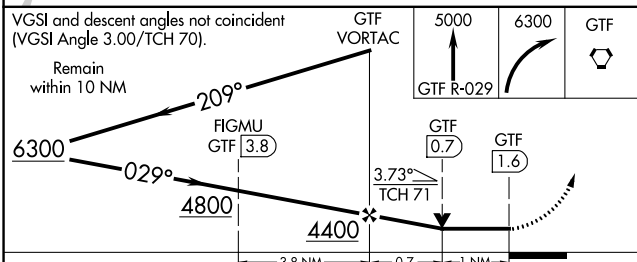
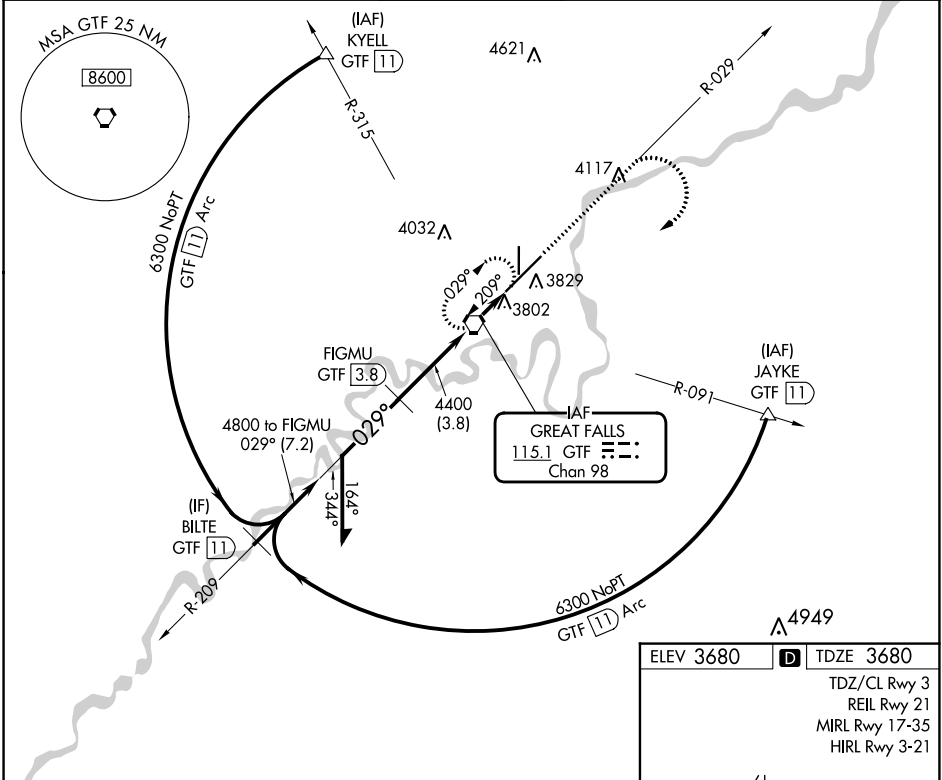
VORTAC GTF <b>115.1</b> Chan <b>98</b>	APP CRS <b>029°</b>	Rwy Idg <b>10502</b> TDZE <b>3680</b> Apt Elev <b>3680</b>
--	------------------------	--

# VOR RWY 3

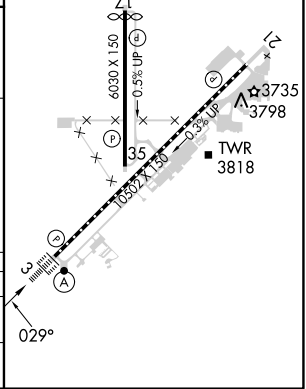
GREAT FALLS INTL (GTF)

DME required. ▼ For inoperative ALS, increase Cat C visibility to RVR 5500.	ALSF-2 A	MISSED APPROACH: Climb to 5000 on GTF VORTAC R-029 then climbing right turn to 6300 direct GTF VORTAC and hold, continue climb-in-hold to 6300.
--	-------------	---

ATIS <b>126.6 269.0</b>	GREAT FALLS APP CON <b>128.6 379.175</b>	GREAT FALLS TOWER <b>118.7 282.2</b>	GND CON <b>121.7 348.6</b>	CLNC DEL <b>121.7 348.6</b>
----------------------------	---	---	-------------------------------	--------------------------------



ELEV 3680	TDZE 3680
TDZ/CL Rwy 3	
REIL Rwy 21	
MIRL Rwy 17-35	
HIRL Rwy 3-21	



CATEGORY	A	B	C	D
S-3	4060/24	380 (400-½)		NA
CIRCLING	4140-1	460 (500-1)	4320-1¾ 640 (700-1¾)	NA

NW-1, 11 JUL 2024 to 08 AUG 2024

NW-1, 11 JUL 2024 to 08 AUG 2024