

LOC/DME I-LZY 111.9 Chan 56	APP CRS 054°	Rwy Idg 10001 TDZE 900 Apt Elev 926
--	------------------------	--

ILS RWY 5R (SA CAT II)

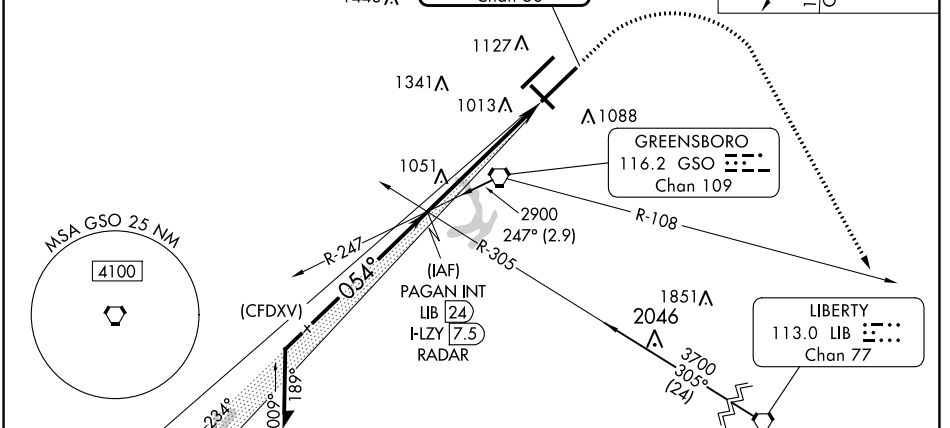
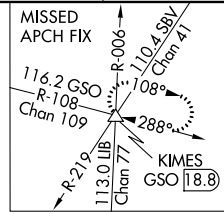
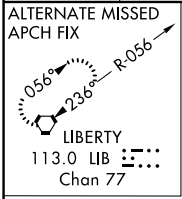
PIEDMONT TRIAD INTL (GSO)

Simultaneous approach authorized.
 REDUCED LIGHTING: Requires specific OPSPEC, MSPEC, or LOA approval and use of autoland or HUD to touchdown.



MISSED APPROACH: Climb to 1600 then climbing right turn to 3000 on heading 139° and GSO VORTAC R-108 to KIMES INT/ GSO 18.8 DME and hold.

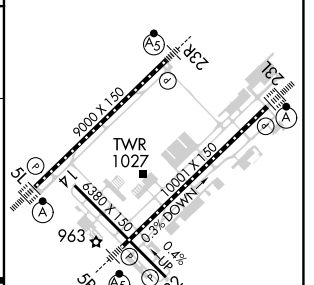
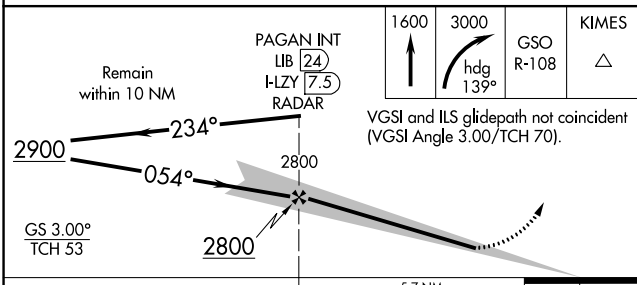
D-ATIS 128.55	GREENSBORO APP CON 124.35 269.225 (250°-049°) 126.6 327.075 (050°-249°)	GREENSBORO TOWER 119.1 290.325	GND CON 121.9 348.6	CLNC DEL 121.75
-------------------------	---	--	-------------------------------	---------------------------



SE-2, 11 JUL 2024 to 08 AUG 2024

SE-2, 11 JUL 2024 to 08 AUG 2024

ELEV 926	D TDZE 900
----------	------------



CATEGORY	A	B	C	D
S-ILS 5R	RA 122/12 100 DA 1000			

SA CATEGORY II ILS - SPECIAL AIRCREW & AIRCRAFT CERTIFICATION REQUIRED

TDZ/CL Rwy 5L, 23R and 23L
 REIL Rwy 32
 HIRL Rwy 14-32, 5R-23L and 5L-23R