

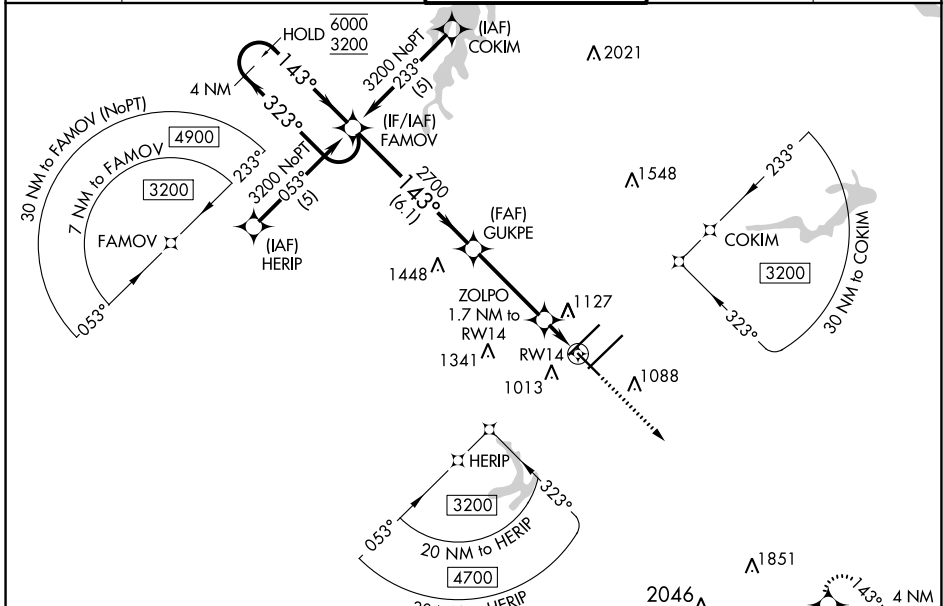
WAAS CH 93919	APP CRS 143°	Rwy Idg TDZE Apt Elev	6380 926 926
-------------------------	------------------------	-----------------------------	---

RNAV (GPS) RWY 14

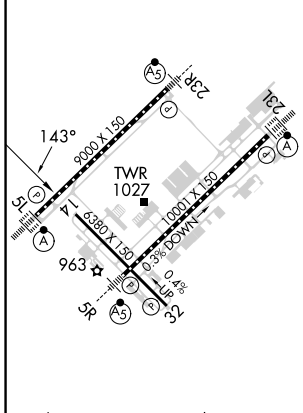
PIEDMONT TRIAD INTL (GSO)

RNP APCH - GPS.		MISSED APPROACH: Climb to 3700 direct IRKUW and hold, continue climb-in-hold to 3700.		
For uncompensated Baro-VNAV systems, LNAV/VNAV NA below -7°C or above 54°C.				

D-ATIS 128.55	GREENSBORO APP CON 124.35 269.225 126.6 327.075 (050°-249°)	GREENSBORO TOWER 119.1 290.325	GND CON 121.9 348.6	CLNC DEL 121.75
-------------------------	---	--	-------------------------------	---------------------------



ELEV 926	D	TDZE 926
----------	----------	----------



TDZ/CL Rwy 5L, 23R and 23L
REIL Rwy 32
HIRL All Rwy

4 NM Holding Pattern FAMOV		3700 IRKUW	
6000 ← 323°		↑	
3200 → 143°		✧	
143° → 2700		ZOLPO 1.7 NM to RW14	
2700		1.2 NM to RW14	
2700		RW14	
GP 3.00°		TCH 59	
6.1 NM		3.6 NM	
0.5		1.2	
CATEGORY	A	B	C
LPV DA		1126- ³ / ₄	200 (200- ³ / ₄)
LNAV/VNAV DA		1424-1 ³ / ₈	498 (500-1 ³ / ₈)
LNAV MDA	1360-1	434 (500-1)	1360-1 ¹ / ₄ 434 (500-1 ¹ / ₄)
C CIRCLING	1440-1	514 (600-1)	1700-2 ¹ / ₄ 1700-2 ¹ / ₂ 774 (800-2 ¹ / ₄) 774 (800-2 ¹ / ₂)

SE-2, 11 JUL 2024 to 08 AUG 2024

SE-2, 11 JUL 2024 to 08 AUG 2024