

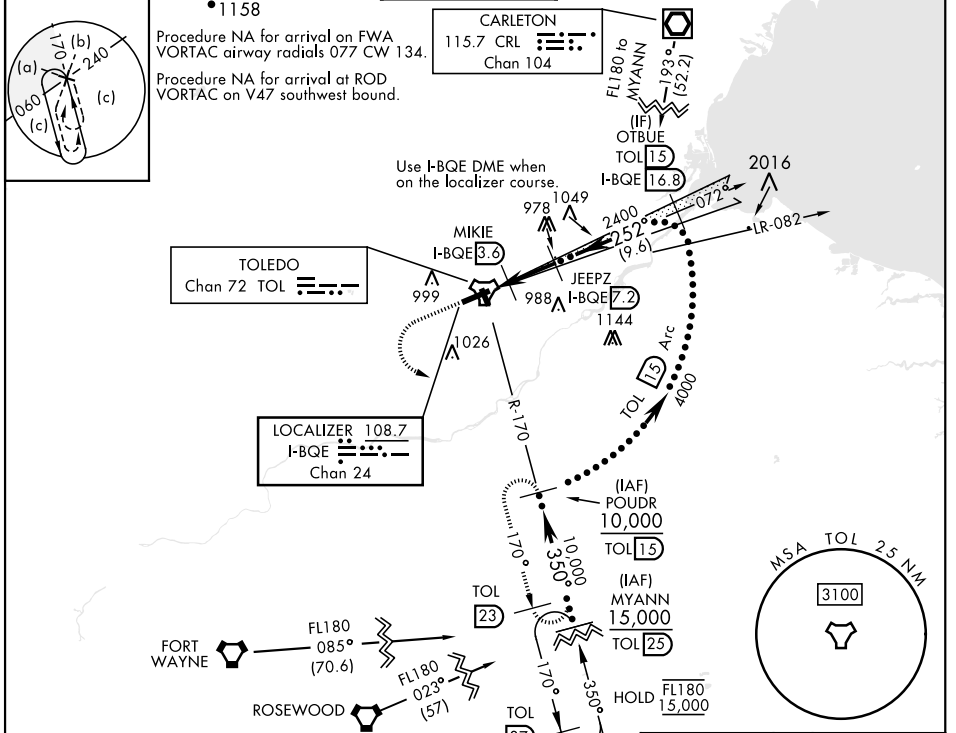
TOLEDO, OHIO

HI-ILS Y or LOC Y RWY 25

LOC/DME I-BQE 108.7 Chan 24	APCH CRS 252°	Rwy ldg 10,599 TDZE 678 Arprt Elev 684	[USAF]	EUGENE F KRANZ TOLEDO EXPRESS (KTOL)
---	-------------------------	---	--------	--------------------------------------

DME required * When ALS inop, increase RVR to 40, vis to 3/4 mile. ** When ALS inop, increase RVR to 50, vis to 1 mile.	MALSR A5	MISSED APPROACH: Climb to 2500 then climbing left turn to 3000 on TOL R-170 to POUDR (TOL R-170/1.5 DME) and hold.
---	--------------------	--

ATIS 118.75 290.225	TOLEDO APP CON 126.1 317.55	TOLEDO TOWER 118.1 285.4	GND CON 121.9 348.6	CLNC DEL 121.75 348.6	ASR
-------------------------------	---------------------------------------	------------------------------------	-------------------------------	---------------------------------	-----



EMERG SAFE ALT 100 NM 3100	ELEV 684	TDZE 678
----------------------------	----------	----------

<table border="1"> <tr> <td>2500</td> <td>3000</td> <td>POUDR</td> </tr> <tr> <td colspan="2">↑</td> <td>TOL R-170</td> </tr> </table>	2500	3000	POUDR	↑		TOL R-170	VGSi and ILS glidepath not coincident (VGSi Angle 3.00/TCH 69).										
2500	3000	POUDR															
↑		TOL R-170															
<table border="1"> <thead> <tr> <th>CATEGORY</th> <th>C</th> <th>D</th> <th>E</th> </tr> </thead> <tbody> <tr> <td>S-ILS 25 *</td> <td>878-1/2</td> <td>200</td> <td>(200-1/2)</td> </tr> <tr> <td>S-LOC 25 **</td> <td>1000-1/2</td> <td>322</td> <td>(400-1/2)</td> </tr> <tr> <td rowspan="2">CIRCLING</td> <td>1300-1 3/4 616 (700-1 3/4)</td> <td>1360-2 1/4 676 (700-2 1/4)</td> <td>1360-2 1/2 676 (700-2 1/2)</td> </tr> </tbody> </table>	CATEGORY	C	D	E	S-ILS 25 *	878-1/2	200	(200-1/2)	S-LOC 25 **	1000-1/2	322	(400-1/2)	CIRCLING	1300-1 3/4 616 (700-1 3/4)	1360-2 1/4 676 (700-2 1/4)	1360-2 1/2 676 (700-2 1/2)	HIRL Rwy 7-25 MRL Rwy 16-34 REIL Rwy 16, 34 TDZL/CL Rwy 7 Rwy 7 ldg 10,599' Rwy 25 ldg 10,599' 726 ± A 775 ± A
CATEGORY	C	D	E														
S-ILS 25 *	878-1/2	200	(200-1/2)														
S-LOC 25 **	1000-1/2	322	(400-1/2)														
CIRCLING	1300-1 3/4 616 (700-1 3/4)	1360-2 1/4 676 (700-2 1/4)	1360-2 1/2 676 (700-2 1/2)														

TOLEDO, OHIO 41° 35'N-83° 48'W EUGENE F KRANZ TOLEDO EXPRESS (KTOL)

Amdt 6B 08SEP22

HI-ILS Y or LOC Y RWY 25

EC-2, 11 JUL 2024 to 08 AUG 2024

EC-2, 11 JUL 2024 to 08 AUG 2024