

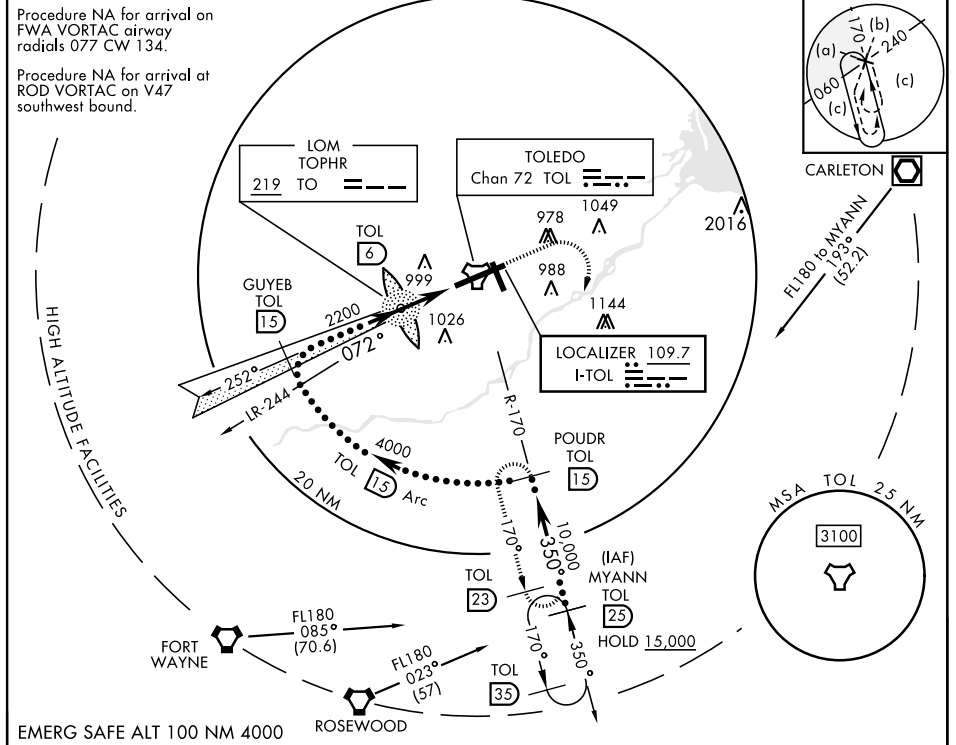
TOLEDO, OHIO

HI-ILS Y or LOC Y RWY 7

LOC I-TOL 109.7	APCH CRS 072°	Rwy ldg 10,599 TDZE 683 Arpt Elev 684	[USAF]	EUGENE F KRANZ TOLEDO EXPRESS (KTOL)
---------------------------	-------------------------	--	--------	--------------------------------------

DME required	ALSF-2	MISSED APPROACH: Climb to 2500, then climbing right turn to 3000 on TOL TACAN R-170 to POWDR/15 DME and hold.
--------------	--------	---

ATIS 118.75 290.225	TOLEDO APP CON 126.1 317.55	TOLEDO TOWER 118.1 285.4	GND CON 121.9 348.6	CLNC DEL 121.75 348.6	ASR
-------------------------------	---------------------------------------	------------------------------------	-------------------------------	---------------------------------	-----



EMERG SAFE ALT 100 NM 4000			ELEV 684		TDZE 683
<p>MYANN R-170 (25) → 15,000 → 350° → 10,000 → 072° → GUYEB INTCP LCZR (15) → 4000 → 072° → LOM (6) 2162 → 2.7 → 1.6 → TACAN</p> <p>POUDR R-170 (15) → 3000 → TOL R-170 → 2500 → 3000 → POUDR</p>					
CATEGORY	C	D	E		
S-ILS 7 *	883/18	200 (200-¾)			
S-LOC 7 **	1080/35	397 (400-¾)			
CIRCLING	1300-1¾ 617 (700-1¾)	1400-2¼ 717 (800-2¼)	1400-2½ 717 (800-2½)	HIRL Rwy 7-25 MIRL Rwy 16-34 REIL Rwy 16, 34 TDZL/CL Rwy 7 Rwy 7 ldg 10,599' Rwy 25 ldg 10,599'	

TOLEDO, OHIO 41° 35' N-83° 48' W EUGENE F KRANZ TOLEDO EXPRESS (KTOL)

HI-ILS Y or LOC Y RWY 7

EC-2, 11 JUL 2024 to 08 AUG 2024

EC-2, 11 JUL 2024 to 08 AUG 2024