

HI-TACAN RWY 7

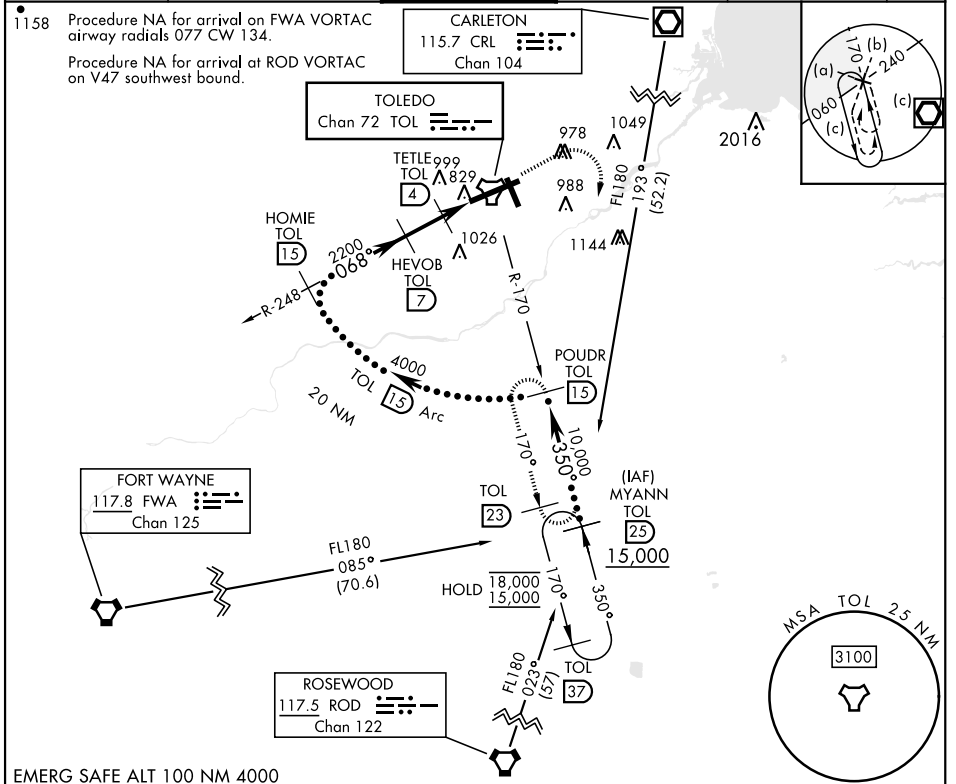
TACAN TOL Chan 72	APCH CRS 068°	Rwy ldg 10,599 TDZE 683 Arpt Elev 684
-----------------------------	-------------------------	--

[USAF]

EUGENE F KRANZ TOLEDO EXPRESS (KTOL)

<p>V * When ALS inop increase CAT E vis to 1$\frac{1}{2}$ mile.</p>	<p>ALS-F-2</p>	<p>MISSED APPROACH: Climb to 3000 then right turn on TOL TACAN R-170 to POWDR/15 DME and hold.</p>
---	----------------	--

<p>ATIS 118.75 290.225</p>	<p>TOLEDO APP CON 126.1 317.55</p>	<p>TOLEDO TOWER 118.1 285.4</p>	<p>GND CON 121.9 348.6</p>	<p>CLNC DEL 121.75 348.6</p>	<p>ASR</p>
---------------------------------------	---	--	---------------------------------------	---	------------



EMERG SAFE ALT 100 NM 4000

<p>MYANN R-170 (25) 15,000</p> <p>POWDR R-170 (15) 10,000</p> <p>HOMIE R-248 (15) 4000</p> <p>HEVOB (7) 2200</p> <p>TETLE (4) 1240</p> <p>TACAN (2.2) (1.6)</p>	<p>3000</p> <p>TOL R-170</p> <p>POWDR TOL (15)</p>	<p>ELEV 684</p> <p>TDZE 683</p>												
<table border="1"> <thead> <tr> <th>CATEGORY</th> <th>C</th> <th>D</th> <th>E</th> </tr> </thead> <tbody> <tr> <td>S-7 *</td> <td>1140/45</td> <td>457 (500-7/8)</td> <td></td> </tr> <tr> <td>CIRCLING</td> <td>1360-2 677 (700-2)</td> <td>1400-2 1/4 717 (800-2 1/4)</td> <td>1400-2 1/2 717 (800-2 1/2)</td> </tr> </tbody> </table>	CATEGORY	C	D	E	S-7 *	1140/45	457 (500-7/8)		CIRCLING	1360-2 677 (700-2)	1400-2 1/4 717 (800-2 1/4)	1400-2 1/2 717 (800-2 1/2)	<p>HIRL Rwy 7-25</p> <p>MIRL Rwy 16-34</p> <p>REIL Rwy 16, 34</p> <p>TDZL/CL Rwy 7</p> <p>Rwy 7 ldg 10,599'</p> <p>Rwy 25 ldg 10,599'</p>	
CATEGORY	C	D	E											
S-7 *	1140/45	457 (500-7/8)												
CIRCLING	1360-2 677 (700-2)	1400-2 1/4 717 (800-2 1/4)	1400-2 1/2 717 (800-2 1/2)											

HI-TACAN RWY 7

EC-2, 11 JUL 2024 to 08 AUG 2024

EC-2, 11 JUL 2024 to 08 AUG 2024