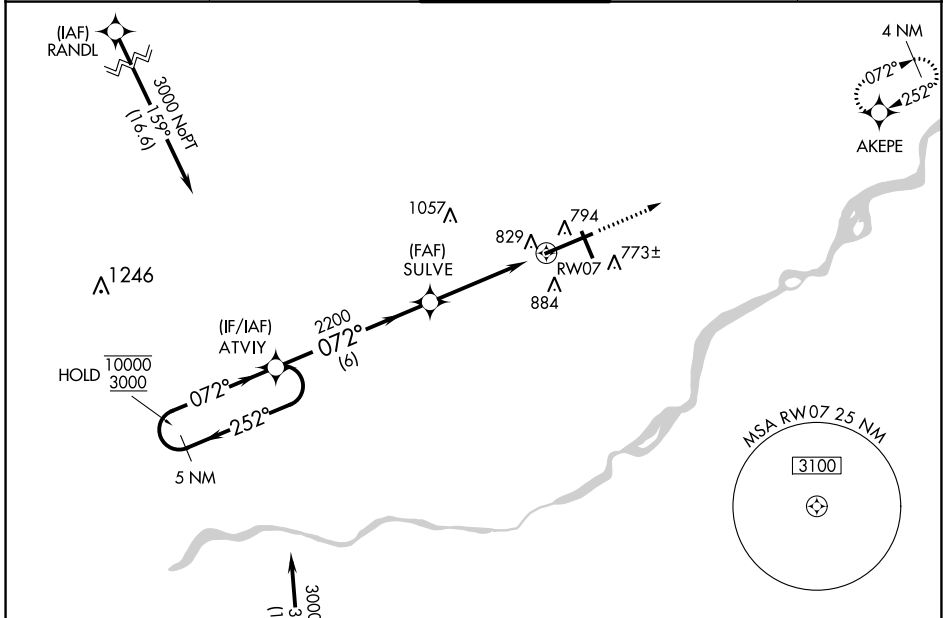


WAAS CH <b>99399</b> <b>W07A</b>	APP CRS <b>072°</b>	Rwy Idg TDZE Apt Elev	<b>10599</b> <b>683</b> <b>683</b>
--	------------------------	-----------------------------	--

# RNAV (GPS) RWY 7

EUGENE F KRANZ TOLEDO EXPRESS (TOL)

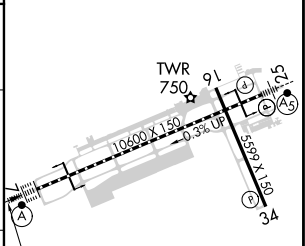
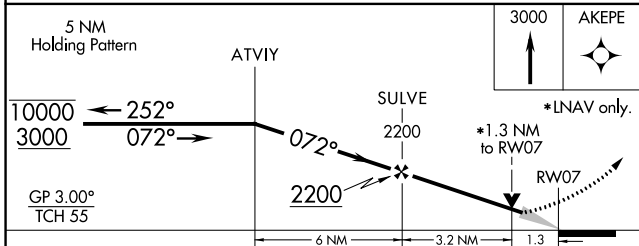
RNP APCH.		ALSF-2		MISSED APPROACH: Climb to 3000 direct AKEPE and hold.	
<p><b>T</b> For uncompensated Baro-VNAV systems, LNAV/VNAV NA below -17°C or above 52°C.</p> <p><b>A</b> For inop ALS, increase LPV all Cats visibility to RVR 5000. Increase LNAV/VNAV Cat E and LNAV Cat E visibility to 1<math>\frac{1}{8}</math> SM.</p> <p>ASR</p>					
ATIS <b>118.75 290.225</b>	TOLEDO APP CON <b>134.35 317.55</b>	TOLEDO TOWER <b>118.1 285.4</b>	GND CON <b>121.9 348.6</b>	CLNC DEL <b>121.75 348.6</b>	



EC-2, 11 JUL 2024 to 08 AUG 2024

EC-2, 11 JUL 2024 to 08 AUG 2024

ELEV 683	<b>D</b>	TDZE 683
----------	----------	----------



CATEGORY	A	B	C	D	E
LPV DA	1018/40 335 (400- $\frac{3}{4}$ )				
LNAV/VNAV DA	1129/50 446 (500-1)				
LNAV MDA	1140/24	457 (500- $\frac{1}{2}$ )	1140/40 457 (500- $\frac{3}{4}$ )	1140/50	457 (500-1)
<b>C</b> CIRCLING	1200-1	517 (600-1)	1300-1 $\frac{3}{4}$ 617 (700-1 $\frac{3}{4}$ )	1360-2 $\frac{1}{4}$ 677 (700-2 $\frac{1}{4}$ )	1360-2 $\frac{1}{2}$ 677 (700-2 $\frac{1}{2}$ )

TDZ/CL Rwy 7  
HIRL Rwy 7-25  
MIRL Rwy 16-34  
REIL Rwy 16 and 34