

WAAS CH <b>69629</b> <b>W32A</b>	APP CRS <b>317°</b>	Rwy Idg TDZE Apt Elev	<b>6236</b> <b>2605</b> <b>2613</b>
--	------------------------	-----------------------------	---

# RNAV (GPS) RWY 32

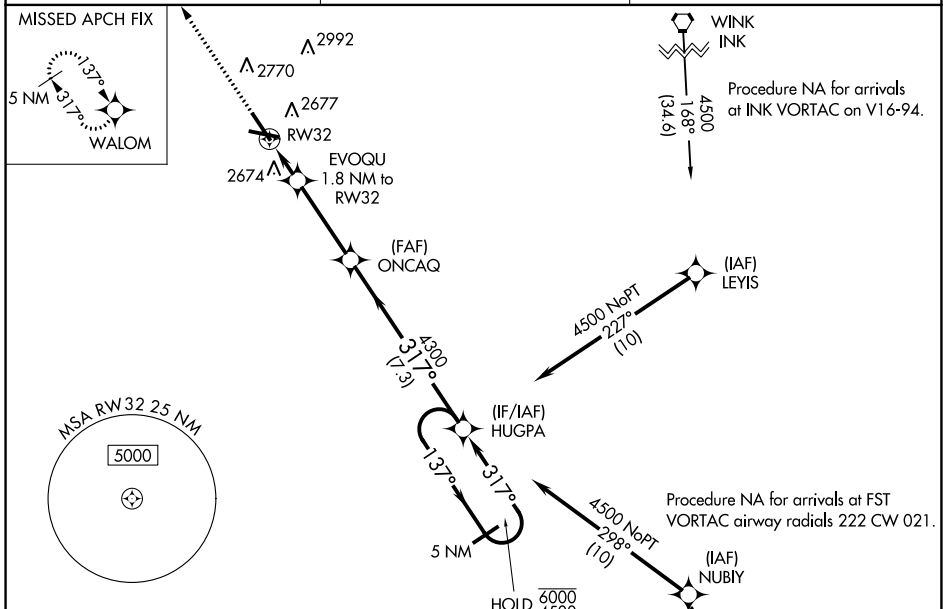
PECOS MUNI (P.E.Q)

RNP APCH - GPS.

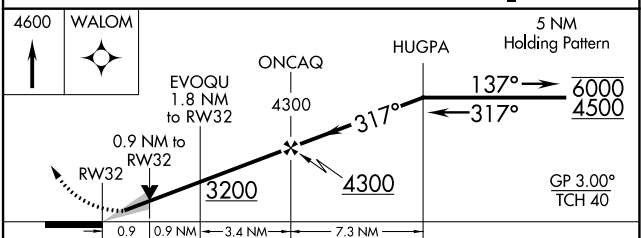
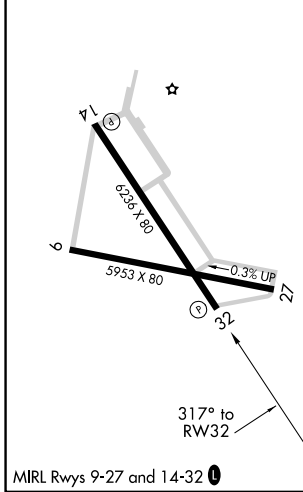
▼ Baro-VNAV and VDP NA when using Wink altimeter setting. For uncompensated Baro-VNAV systems, LNAV/VNAV NA below -20°C or above 54°C. When local altimeter setting not received, use Wink altimeter setting: increase LPV DA to 2900 feet, LNAV/VNAV DA to 2950 feet and all visibilities ¼ SM; increase all MDA 100 feet and visibility Cat C and LNAV Cat D ¼ SM. Circling Rwy 9, 27 NA at night.

MISSED APPROACH: Climb to 4600 direct WALOM and hold.

AWOS-3 <b>118.175</b>	ALBUQUERQUE CENTER <b>135.875 292.15</b>	UNICOM <b>122.8 (CTAF) 0</b>
--------------------------	---	---------------------------------



ELEV 2613	TDZE 2605
-----------	-----------



CATEGORY	A	B	C	D
LPV DA		2805-¾	200 (200-¾)	
LNAV/VNAV DA		2855-¾	250 (300-¾)	
LNAV MDA		2940-1	335 (400-1)	
<b>C</b> CIRCLING	3060-1 447 (500-1)	3140-1 527 (600-1)	3360-2¼ 747 (800-2¼)	3360-2½ 747 (800-2½)

SC-3, 11 JUL 2024 to 08 AUG 2024

SC-3, 11 JUL 2024 to 08 AUG 2024