

RADAR and DME required.

**TOP ALTITUDE:  
ASSIGNED BY ATC**

ATIS  
135.575 269.9  
GND CON  
121.6 275.8  
ELLINGTON TOWER  
126.05 253.5  
HOUSTON DEP CON  
134.45 284.0

TAKEOFF MINIMUMS

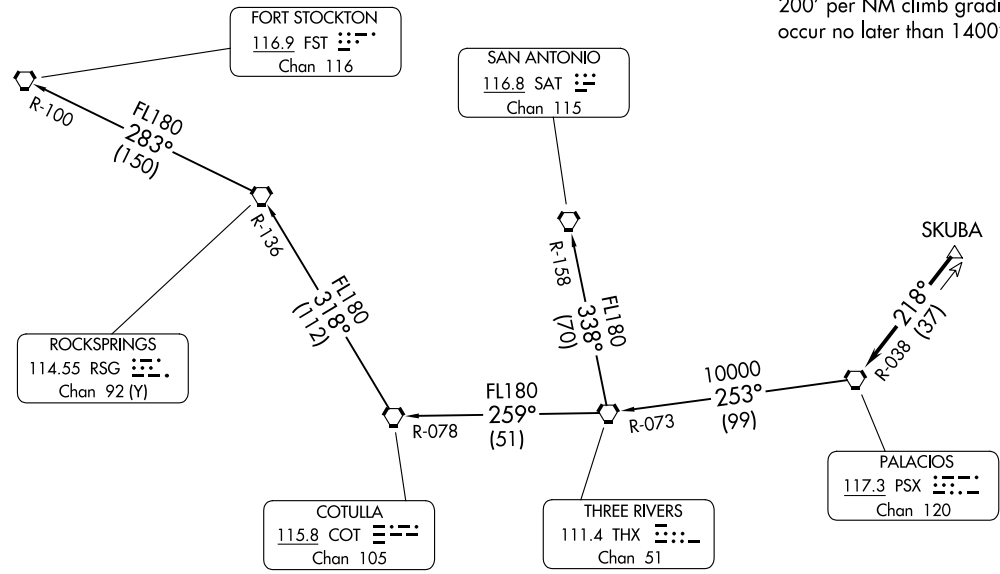
Rwys 4, 17L/R, 35L/R: Standard.  
Rwy 22: 200-1¼ or standard with minimum climb of 214' per NM to 300 or alternatively with standard takeoff minimums and a normal 200' per NM climb gradient, takeoff must occur no later than 1400' prior to DER.

**PALACIOS THREE DEPARTURE**  
(PSX3.PSX) 03NOV22

**PALACIOS THREE DEPARTURE**  
(PSX3.PSX) 24137

AL-197 (FAA)

ELLINGTON (EFTD)  
HOUSTON, TEXAS



NOTE: Chart not to scale.

(CONTINUED ON FOLLOWING PAGE)

HOUSTON, TEXAS  
ELLINGTON (EFTD)



DEPARTURE ROUTE DESCRIPTION

TAKEOFF ALL RUNWAYS: Climb on assigned heading for RADAR vectors to SKUBA. Maintain ATC assigned altitude. Expect filed altitude 10 minutes after departure, thence . . . .

. . . . on PSX R-038 to PSX VORTAC.

FORT STOCKTON TRANSITION (PSX3.FST): From over PSX VORTAC on PSX R-253 and THX R-073 to THX VORTAC, then on THX R-259 and COT R-078 to COT VORTAC, then on COT R-318 and RSG R-136 to RSG VORTAC, then on RSG R-283 and FST R-100 to FST VORTAC.

SAN ANTONIO TRANSITION (PSX3.SAT): From over PSX VORTAC on PSX R-253 and THX R-073 to THX VORTAC, then on SAT R-158 to SAT VORTAC.

SC-5, 11 JUL 2024 to 08 AUG 2024

SC-5, 11 JUL 2024 to 08 AUG 2024