

WAAS CH 97629 W35A	APP CRS 354°	Rwy Idg TDZE Apt Elev	9001 28 33
--	------------------------	-----------------------------	---------------------------------------

RNAV (GPS) RWY 35L

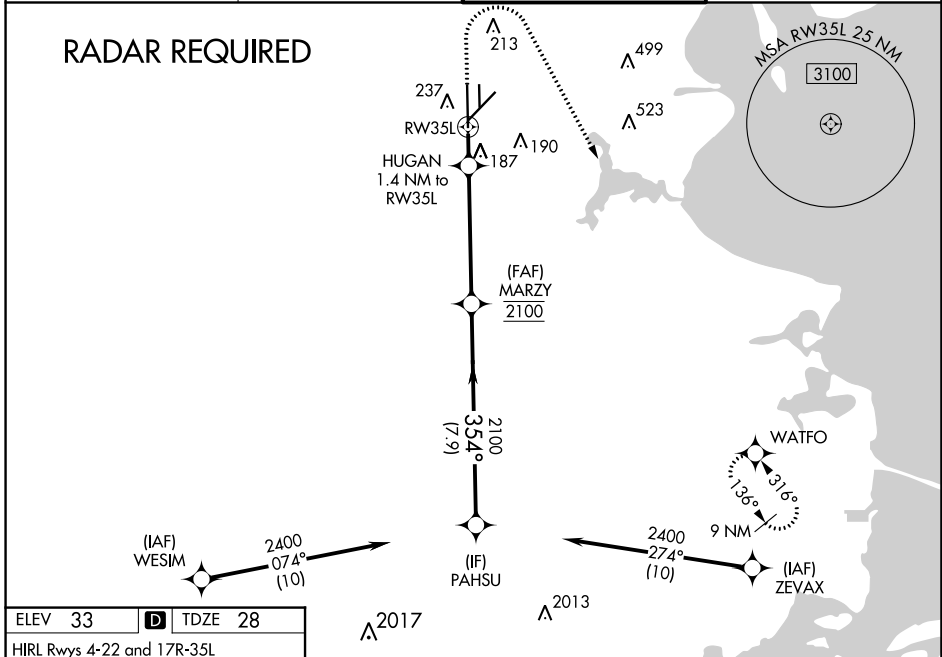
ELLINGTON (EFD)

⚠ For uncompensated Baro-VNAV systems, LNAV/VNAV NA below -15°C (5°F) or above 43°C (109°F). Circling NA west of Rwy 17R-35L. DME/DME RNP-0.3 NA. For inop MALSF, increase LNAV/VNAV all Cats visibility to 1½ mile, and LNAV Cats A and B visibility to 1 mile and Cats C, D and E visibility to 1½ mile. Inop table does not apply to LPV.

MALSF

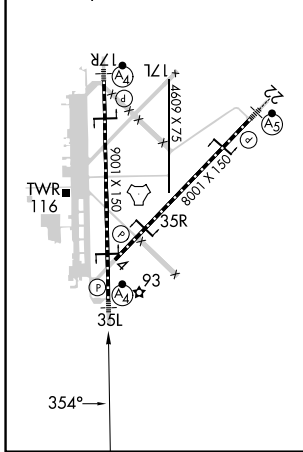
MISSED APPROACH: Climb to 1500 then climbing right turn to 3100 direct WATFO and hold.

ATIS 135.575 269.9	HOUSTON APP CON 134.45 284.0	ELLINGTON TOWER 126.05 253.5	GND CON 121.6 275.8
------------------------------	--	--	-------------------------------

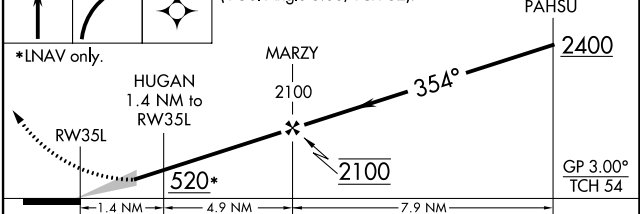


ELEV 33	D	TDZE 28
---------	----------	---------

HIRL Rws 4-22 and 17R-35L
TDZ/CL Rws 17R, 22 and 35L



1500 3100 WATFO
VGSI and RNAV glidepath not coincident (VGSI Angle 3.00°/TCH 32).



CATEGORY	A	B	C	D	E
LPV DA	228/40		200 (200-¾)		
LNAV/VNAV DA	499/60		471 (500-1¼)		
LNAV MDA	440/40	412 (500-¾)	440/50		412 (500-1)
C CIRCLING	500-1	468 (500-1)	580-1½ 547 (600-1½)	640-2 607 (700-2)	700-2¼ 667 (700-2¼)

SC-5, 11 JUL 2024 to 08 AUG 2024

SC-5, 11 JUL 2024 to 08 AUG 2024