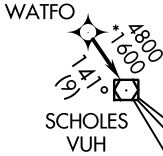
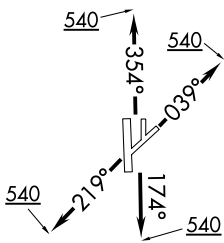


WATFO SIX DEPARTURE (RNAV)

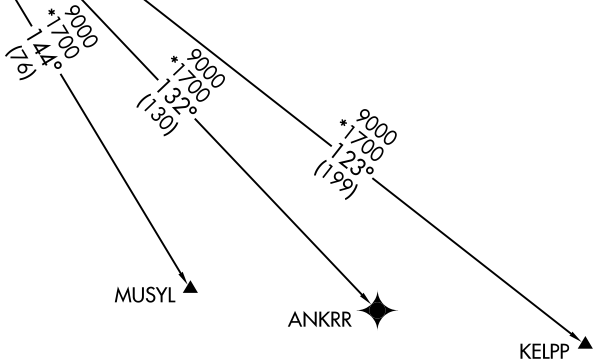
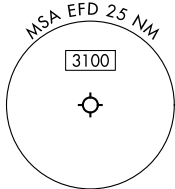
RNAV 1 - DME/DME/IRU or GPS.
RADAR required.

**TOP ALTITUDE:
ASSIGNED BY ATC**

ATIS
135.575 269.9
GND CON
121.6 275.8
ELLINGTON TOWER
126.05 253.5
HOUSTON DEP CON
134.45 284.0



TAKEOFF MINIMUMS:
Rwy 4, 17L/R, 22, 35L/R: Standard with
minimum climb of 500'/NM to 540.



NOTE: Chart not to scale.



DEPARTURE ROUTE DESCRIPTION

TAKEOFF RUNWAY 4: Climb on heading 039° to 540, for RADAR vectors to WATFO, thence. . . .

TAKEOFF RUNWAYS 17L/R: Climb on heading 174° to 540, for RADAR vectors to WATFO, thence. . . .

TAKEOFF RUNWAY 22: Climb on heading 219° to 540, for RADAR vectors to WATFO, thence. . . .

TAKEOFF RUNWAYS 35L/R: Climb on heading 354° to 540, for RADAR vectors to WATFO, thence. . . .

. . . on track 141° to VUH VOR/DME, then on (transition). Maintain ATC assigned altitude.
Expect filed altitude 10 minutes after departure.

ANKRR TRANSITION (WATFO6.ANKRR)
KELPP TRANSITION (WATFO6.KELPP)
MUSYL TRANSITION (WATFO6.MUSYL)

SC-5, 11 JUL 2024 to 08 AUG 2024

SC-5, 11 JUL 2024 to 08 AUG 2024