

# GIFFA ONE DEPARTURE

AL-198 (FAA)

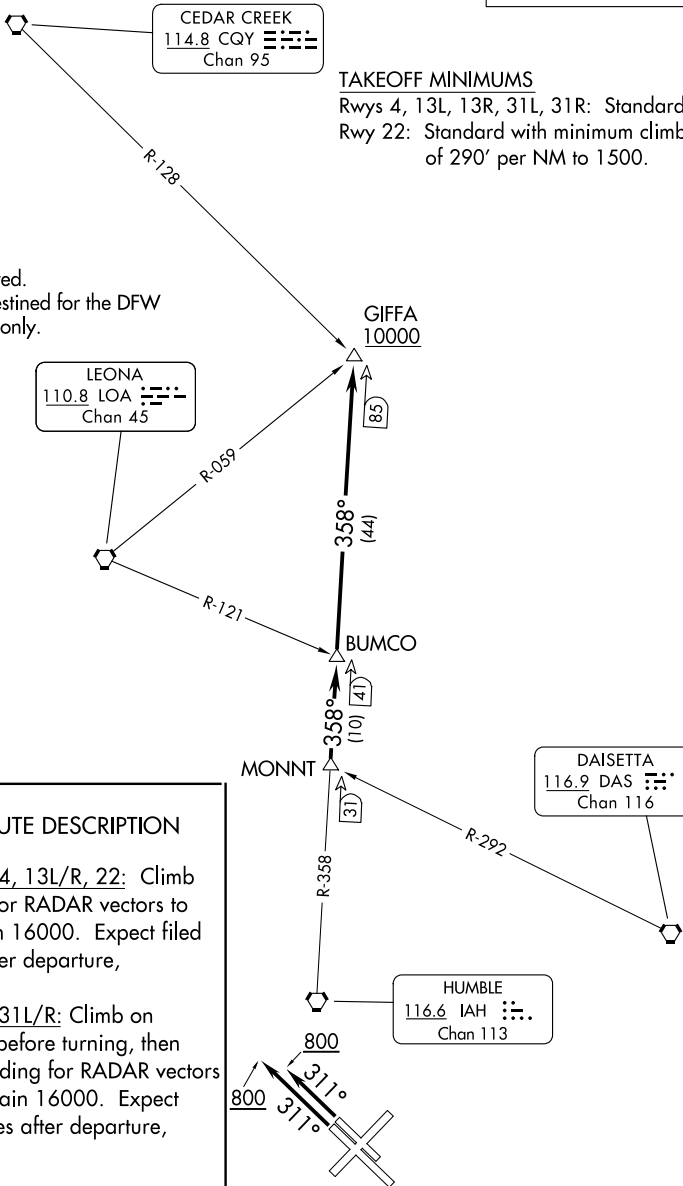
WILLIAM P HOBBY (HOU)  
HOUSTON, TEXAS

**TOP ALTITUDE:  
16000**

D-ATIS  
124.6  
CLNC DEL  
125.45  
CPDLC  
GND CON  
121.9  
HOBBY TOWER  
118.7 256.9  
HOUSTON DEP CON  
132.25 285.425

**TAKEOFF MINIMUMS**  
Rwys 4, 13L, 13R, 31L, 31R: Standard.  
Rwy 22: Standard with minimum climb  
of 290' per NM to 1500.

NOTE: RADAR required.  
NOTE: For aircraft destined for the DFW  
terminal area only.



## DEPARTURE ROUTE DESCRIPTION

**TAKEOFF RUNWAYS 4, 13L/R, 22:** Climb on assigned heading for RADAR vectors to MONNT INT, maintain 16000. Expect filed altitude 10 minutes after departure, thence . . . .

**TAKEOFF RUNWAYS 31L/R:** Climb on heading 311° to 800 before turning, then climb on assigned heading for RADAR vectors to MONNT INT, maintain 16000. Expect filed altitude 10 minutes after departure, thence . . . .

. . . . on IAH R-358 to cross GIFFA INT at or above 10000.

NOTE: Chart not to scale.

# GIFFA ONE DEPARTURE

(GIFFA1.GIFFA) 07OCT21

HOUSTON, TEXAS  
WILLIAM P HOBBY (HOU)

SC-5, 11 JUL 2024 to 08 AUG 2024

SC-5, 11 JUL 2024 to 08 AUG 2024