

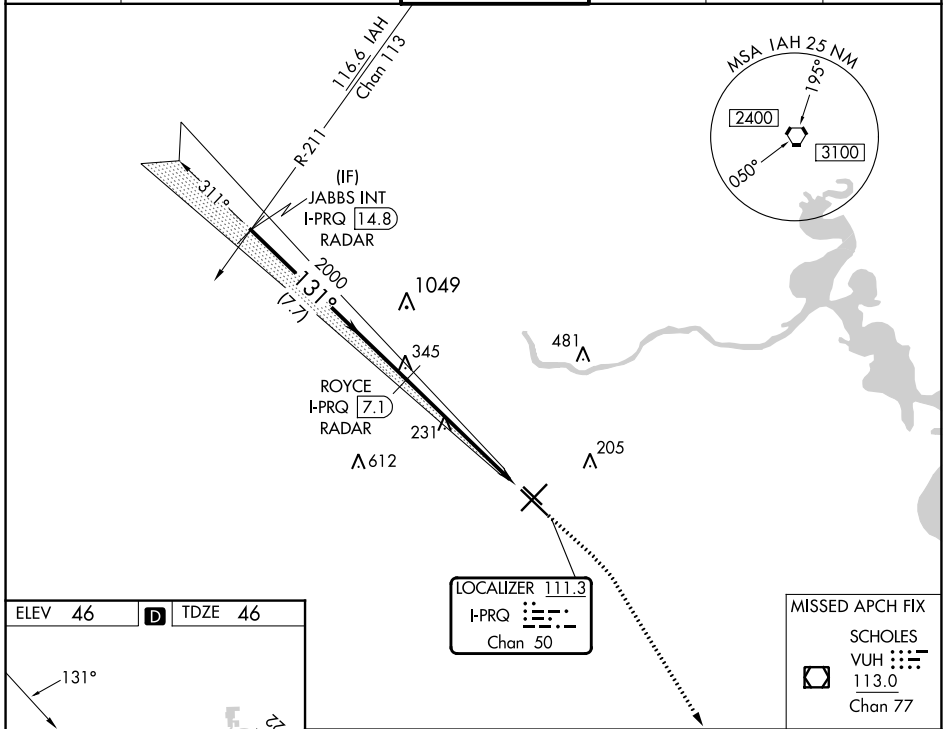
LOC/DME I-PRQ <b>111.3</b> Chan <b>50</b>	APP CRS <b>131°</b>	Rwy Idg <b>6568</b> TDZE <b>46</b> Apt Elev <b>46</b>
---	------------------------	---

# ILS or LOC RWY 13R

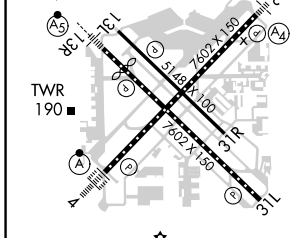
WILLIAM P HOBBY (HOU)

RADAR or DME required for LOC only. RADAR required for procedure entry.		MALSR 	MISSED APPROACH: Climb to 800 then climbing right turn to 2200 direct VUH VOR/DME.
<p><b>▼</b> Inop table does not apply to S-ILS Rwy 13R. Rwy 13R helicopter visibility reduction below 3/4 SM NA. For inop ALS, increase S-LOC 13R Cats A/B visibility to RVR 5500, Cats C/D/E to 1 3/4 SM.</p> <p><b>▲</b></p>			

D-ATIS <b>124.6</b>	HOUSTON APP CON <b>120.05 379.1</b> EAST <b>124.35 316.15</b> WEST	HOBBY TOWER <b>118.7 256.9</b>	GND CON <b>121.9</b>	CLNC DEL <b>125.45</b>	CPDLC
------------------------	--	-----------------------------------	-------------------------	---------------------------	-------



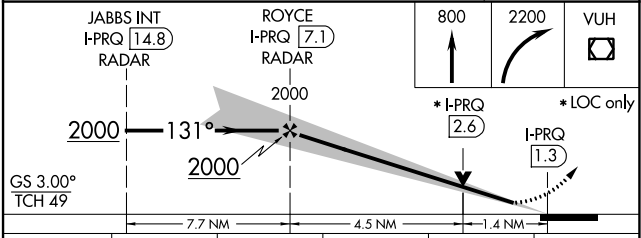
ELEV 46	<b>D</b>	TDZE 46
---------	----------	---------



REIL Rwy 31L  
MIRL Rwys 13L-31R  
HIRL Rwys 4-22 and 13R-31L  
TDZ/CL Rwys 4, 13R and 31L

FAF to MAP 5.9 NM

Knots	60	90	120	150	180
Min:Sec	5:54	3:56	2:57	2:22	1:58



CATEGORY	A	B	C	D	E
S-ILS 13R	296/40 250 (300-3/4)				
S-LOC 13R	540/40	494 (500-3/4)	540/50	494 (500-1)	540/60 494 (500-1 1/4)
<b>C</b> CIRCLING	540-1	494 (500-1)	740-2 1/4	694 (700-2 1/4)	860-3 814 (900-3)

SC-5, 11 JUL 2024 to 08 AUG 2024

SC-5, 11 JUL 2024 to 08 AUG 2024