

LOC/DME I-HUB <b>109.9</b> Chan 36	APP CRS <b>041°</b>	Rwy Idg <b>7602</b> TDZE <b>44</b> Apt Elev <b>46</b>
--	------------------------	---

**ILS or LOC RWY 4**  
WILLIAM P HOBBY (HOU)

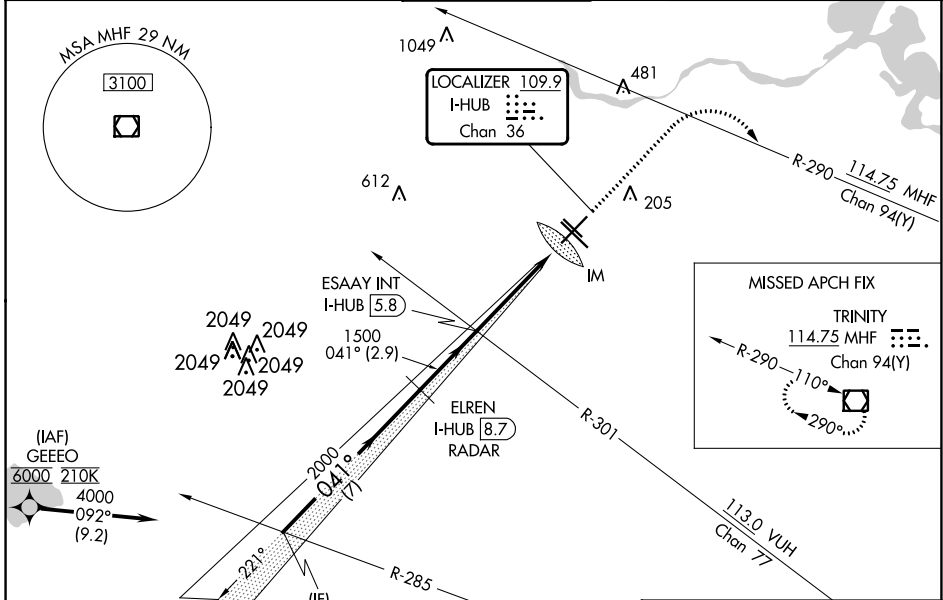
Aircraft not GPS equipped - RADAR required for procedure entry. From GEEEO: RNAV 1 - GPS required.

ALSF-2

MISSED APPROACH: Climb to 1500 then climbing right turn to 3000 on MHF VOR/DME R-290 to MHF VOR/DME and hold.

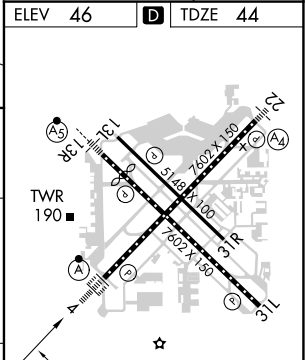
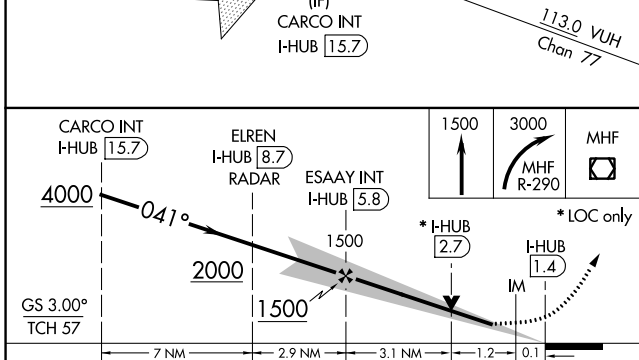
For inop ALSF-2, increase S-ILS 4 Cat E visibility to RVR 4000;  
S-LOC 4 Cat C/D/E visibility to 1 1/8.

D-ATIS <b>124.6</b>	HOUSTON APP CON <b>120.05 379.1 EAST</b> <b>124.35 316.15 WEST</b>	HOBBY TOWER <b>118.7 256.9</b>	GND CON <b>121.9</b>	CLNC DEL <b>125.45</b>	CPDLC
------------------------	--	-----------------------------------	-------------------------	---------------------------	-------



SC-5, 11 JUL 2024 to 08 AUG 2024

SC-5, 11 JUL 2024 to 08 AUG 2024



CATEGORY	A	B	C	D	E
	S-ILS 4 244/18 200 (200-1/2)				
S-LOC 4	520/24	476 (500-1/2)	520/50 476 (500-1)		
CIRCLING	520-1	474 (500-1)	740-2 1/4	694 (700-2 1/4)	860-3 814 (900-3)

Knots	60	90	120	150	180
	Min:Sec	4:24	2:56	2:12	1:46