

(INDIE8.INDIE) 21280

AL-198 (FAA)

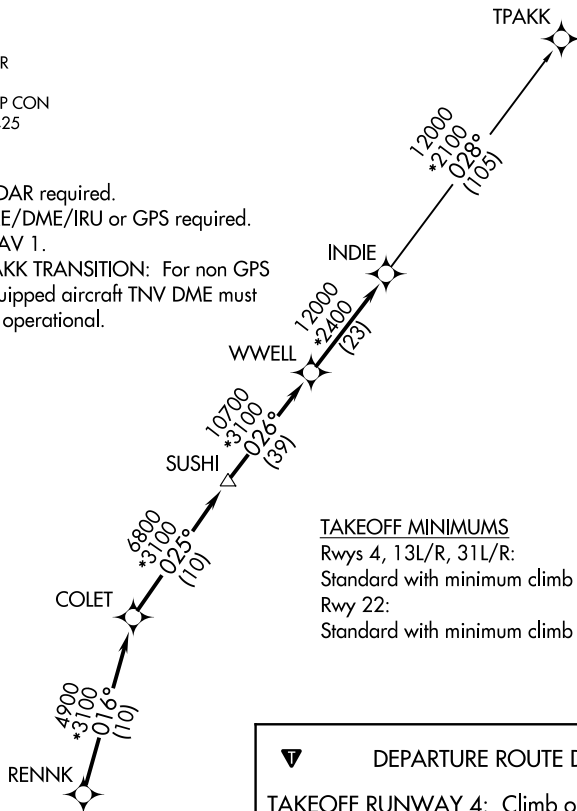
WILLIAM P HOBBY (HOU)  
HOUSTON, TEXAS

# INDIE EIGHT DEPARTURE (RNAV)

**TOP ALTITUDE:  
16000**

D-ATIS 124.6  
CLNC DEL  
125.45  
CPDLC  
GND CON  
121.9  
HOBBY TOWER  
118.7 256.9  
HOUSTON DEP CON  
132.25 285.425

NOTE: RADAR required.  
NOTE: DME/DME/IRU or GPS required.  
NOTE: RNAV 1.  
NOTE: TPAKK TRANSITION: For non GPS  
equipped aircraft TNV DME must  
be operational.



### TAKEOFF MINIMUMS

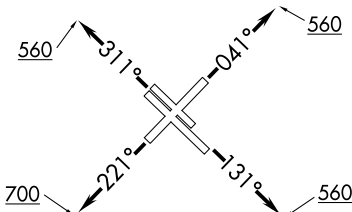
Rwys 4, 13L/R, 31L/R:  
Standard with minimum climb of 500' per NM to 560.  
Rwy 22:  
Standard with minimum climb of 500' per NM to 700.

### DEPARTURE ROUTE DESCRIPTION

**TAKEOFF RUNWAY 4:** Climb on heading 041° to 560 for RADAR vectors to RENNK, thence . . . .  
**TAKEOFF RUNWAYS 13L/R:** Climb on heading 131° to 560 for RADAR vectors to RENNK, thence . . . .  
**TAKEOFF RUNWAY 22:** Climb on heading 221° to 700 for RADAR vectors to RENNK, thence . . . .  
**TAKEOFF RUNWAYS 31L/R:** Climb on heading 311° to 560 for RADAR vectors to RENNK, thence . . . .

. . . . on track 016° to COLET, then on track 025° to SUSHI, then on track 026° to WWELL, then on track 026° to INDIE, then on (transition). Maintain 16000 or as assigned by ATC. Expect filed altitude 10 minutes after departure.

TPAKK TRANSITION (INDIE8.TPAKK)



NOTE: Chart not to scale.

SC-5, 11 JUL 2024 to 08 AUG 2024

SC-5, 11 JUL 2024 to 08 AUG 2024

INDIE EIGHT DEPARTURE (RNAV)  
(INDIE8.INDIE) 07OCT21

HOUSTON, TEXAS  
WILLIAM P HOBBY (HOU)