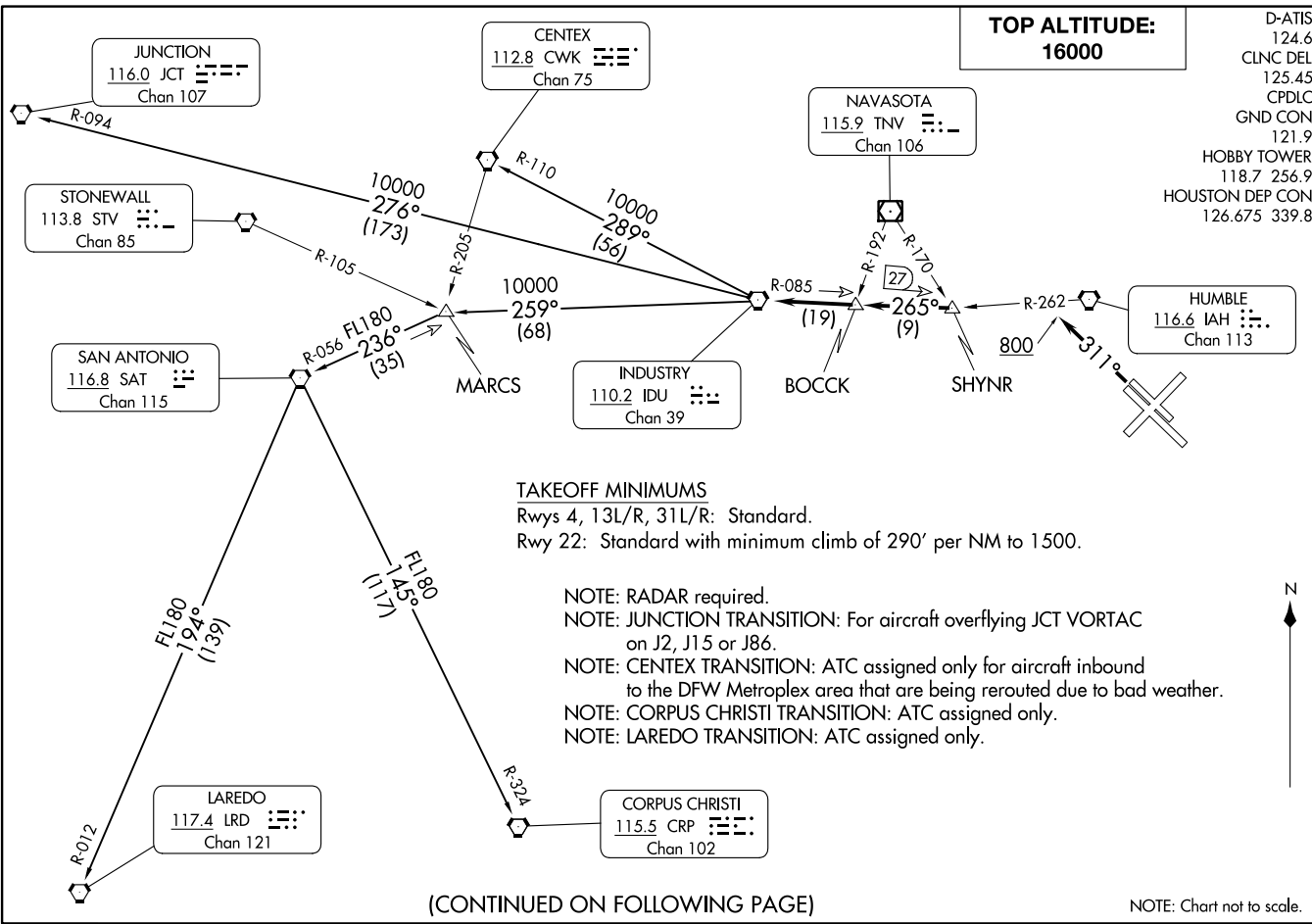


INDUSTRY ONE DEPARTURE  
(IDU1, IDU) 070C121

HOUSTON, TEXAS  
WILLIAM P HOBBY (HOT)



INDUSTRY ONE DEPARTURE  
(IDU1, IDU) 24137

HOUSTON, TEXAS  
WILLIAM P HOBBY (HOT)

- D-ATIS 124.6
- CLNC DEL 125.45
- CPDLC
- GND CON 121.9
- HOBBY TOWER 118.7 256.9
- HOUSTON DEP CON 126.675 339.8

(CONTINUED ON FOLLOWING PAGE)

NOTE: Chart not to scale.



DEPARTURE ROUTE DESCRIPTION

TAKEOFF RUNWAYS 4, 13L/R, 22: Climb on assigned heading for RADAR vectors to SHYNR INT, maintain 16000. Expect filed altitude 10 minutes after departure, thence . . . .

TAKEOFF RUNWAYS 31L/R: Climb on heading 311° to 800 before turning, then climb on assigned heading for RADAR vectors to SHYNR INT, maintain 16000. Expect filed altitude 10 minutes after departure, thence . . . .

. . . . on IDU R-085 to BOCK INT, then on IDU R-085 to IDU VORTAC.

CENTEX TRANSITION (IDU1.CWK): From over IDU VORTAC on IDU R-289 and CWK R-110 to CWK VORTAC.

CORPUS CHRISTI TRANSITION (IDU1.CRP): From over IDU VORTAC on IDU R-259 to MARCS INT, then on SAT R-056 to SAT VORTAC, then on SAT R-145 and CRP R-324 to CRP VORTAC.

JUNCTION TRANSITION (IDU1.JCT): From over IDU VORTAC on IDU R-276 and JCT R-094 to JCT VORTAC.

LAREDO TRANSITION (IDU1.LRD): From over IDU VORTAC on IDU R-259 to MARCS INT, then on SAT R-056 to SAT VORTAC, then on SAT R-194 and LRD R-012 to LRD VORTAC.

SC-5, 11 JUL 2024 to 08 AUG 2024

SC-5, 11 JUL 2024 to 08 AUG 2024