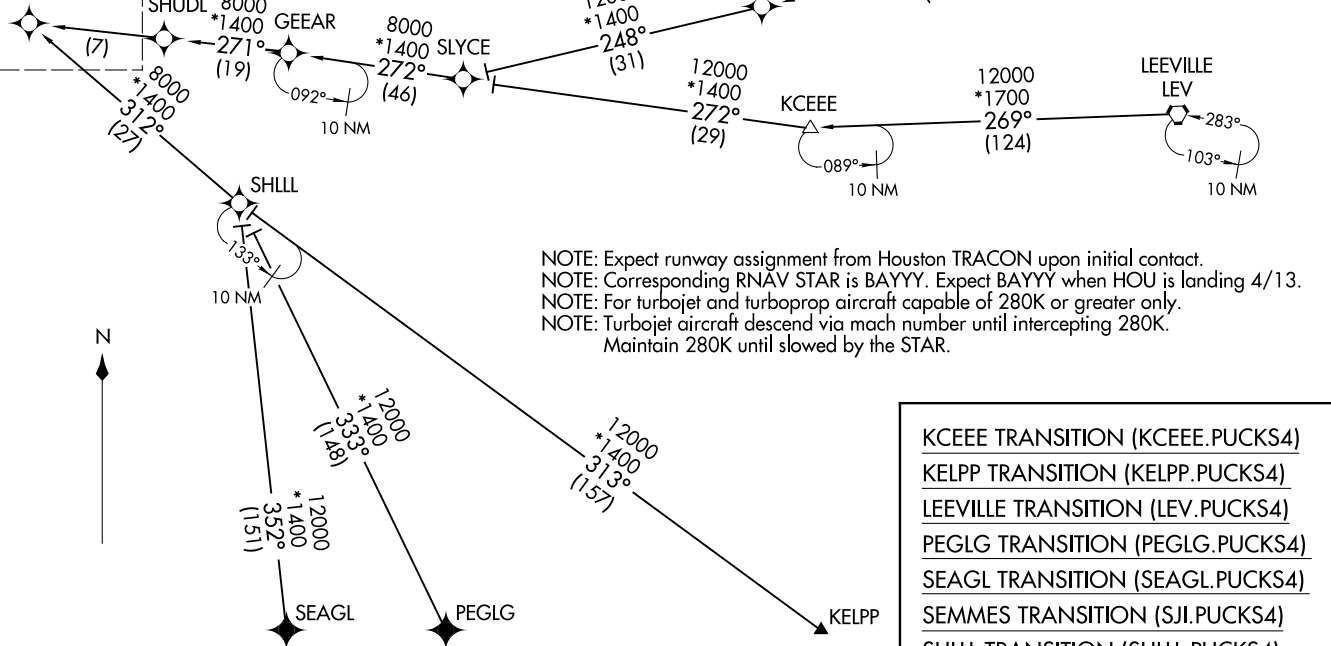


RNAV 1- DME/DME/IRU or GPS.
 KELPP, PEGLG, and SEAGL TRANSITIONS, RNP 1- GPS.
 RADAR required.

HOUSTON APP CON
 119.625 226.675
 D-ATIS
 124.6

See following page
 for Arrival Routes.
 BAYYY

15000 250K
 12000



(CONTINUED ON FOLLOWING PAGE)

NOTE: Chart not to scale.

PUCKS FOUR ARRIVAL (RNAV) Transition Routes
 (BAYYY.PUCKS4) 07OCT21

HOUSTON, TEXAS
 WILLIAM P HOBBY (HOU)

(BAYYY.PUCKS4) 21280
 PUCKS FOUR ARRIVAL (RNAV) Transition Routes
 AL-198 (FAA)

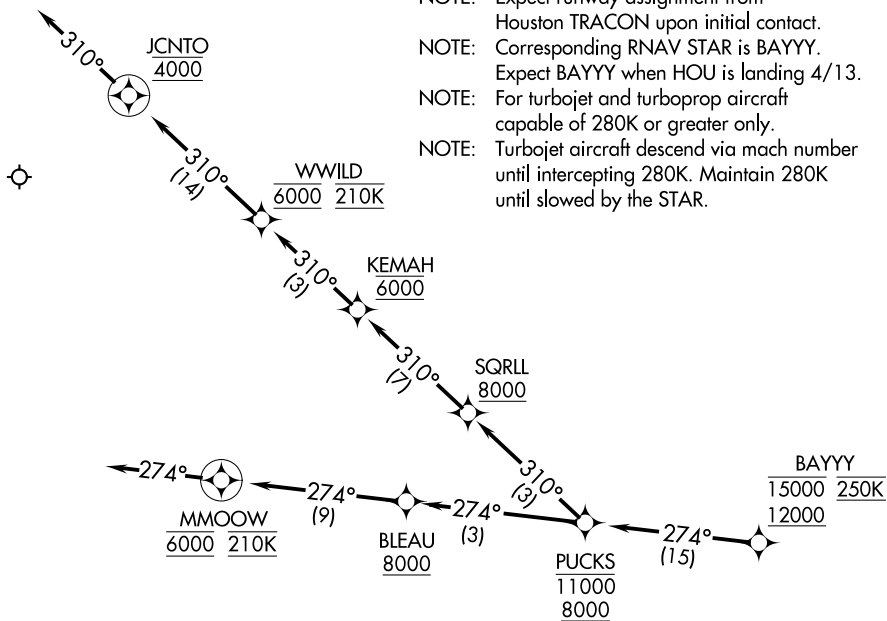
WILLIAM P HOBBY (HOU)
 HOUSTON, TEXAS

PUCKS FOUR ARRIVAL (RNAV) Arrival Routes

HOUSTON APP CON
119.625 226.675
D-ATIS
124.6

RNAV 1- DME/DME/IRU or GPS.
RADAR required.

- NOTE: Expect runway assignment from Houston TRACON upon initial contact.
- NOTE: Corresponding RNAV STAR is BAYYY. Expect BAYYY when HOU is landing 4/13.
- NOTE: For turbojet and turboprop aircraft capable of 280K or greater only.
- NOTE: Turbojet aircraft descend via mach number until intercepting 280K. Maintain 280K until slowed by the STAR.



NOTE: Chart not to scale.

ARRIVAL ROUTE DESCRIPTION

From BAYYY on track 274° to cross PUCKS between 8000 and 11000.

LANDING RUNWAY 22: From PUCKS on track 310° to cross SQRLL at or above 8000, then on track 310° to cross KEMAH at 6000, then on track 310° to cross WWILD at 6000 and at 210K, then on track 310° to cross JCNT0 at 4000, then on track 310°. Expect RADAR vectors to final approach course.

LANDING RUNWAYS 31L/R: From PUCKS on track 274° to cross BLEAU at or above 8000, then on track 274° to cross MMOOW at 6000 and at 210K, then on track 274°. Expect RADAR vectors to final approach course.