

WYLSN EIGHT DEPARTURE (RNAV)

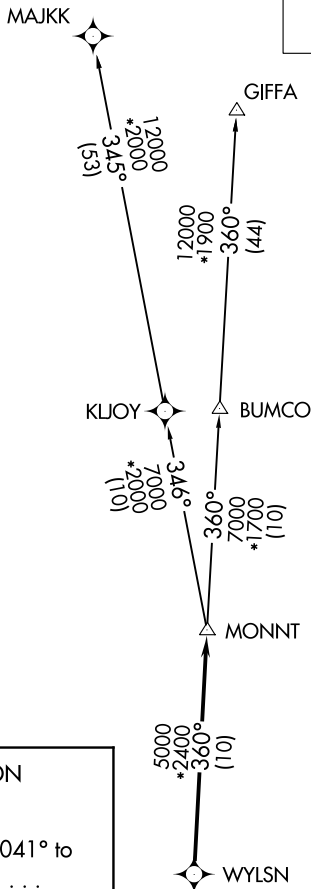
D-ATIS
 124.6
 CLNC DEL
 125.45
 CPDLC
 GND CON
 121.9
 HOBBY TOWER
 118.7 256.9
 HOUSTON DEP CON
 132.25 285.425

NOTE: RADAR required.
 NOTE: DME/DME/IRU or GPS required.
 NOTE: RNAV 1.

TAKEOFF MINIMUMS

Rwys 4, 13L/R, 31L/R: Standard with minimum climb of 500' per NM to 560.
 Rwy 22: Standard with minimum climb of 500' per NM to 700.

**TOP ALTITUDE:
 16000**



DEPARTURE ROUTE DESCRIPTION

TAKEOFF RUNWAY 4: Climb on heading 041° to 560 for RADAR vectors to WYLSN, thence. . .

TAKEOFF RUNWAYS 13L/R: Climb on heading 131° to 560 for RADAR vectors to WYLSN, thence. . .

TAKEOFF RUNWAY 22: Climb on heading 221° to 700 for RADAR vectors to WYLSN, thence. . .

TAKEOFF RUNWAYS 31L/R: Climb on heading 311° to 560 for RADAR vectors to WYLSN, thence. . .

. . . on track 360° to MONNT, then on (transition).

Maintain 16000 or as assigned by ATC. Expect filed altitude 10 minutes after departure.

. . .

. . .

. . .

. . .

. . .

. . .

. . .

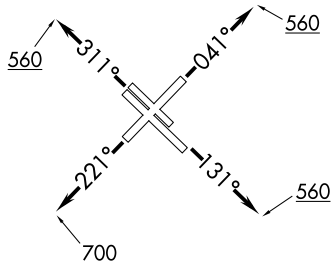
. . .

. . .

. . .

. . .

. . .



NOTE: Chart not to scale.

WYLSN EIGHT DEPARTURE (RNAV)